



Proposals for a new Aldi store in Formby

Computer Generated Image of the proposed store



Welcome to our exhibition

Aldi, the award-winning discount food retailer, is bringing forward proposals to develop brownfield land adjacent to Formby Bypass with a new, high-quality food store.

The proposal site, which is currently used to store vehicles, previously operated as a commercial plant nursery/garden centre which closed a number of years ago. Some buildings have been demolished and those that remain are falling into disrepair. Aldi's proposals would transform the site, bringing it back into use and providing a new discount food store in a convenient location.

The scheme would also provide up to 40 new full and part-time jobs in the new Aldi store, alongside additional jobs associated with construction and through the supply chain.

Aldi is considering submitting a planning application to Sefton Council in the coming months. Before we do this, we want to understand the views of the local community and are inviting feedback on our proposals.

Improved choice for Formby

Aldi is aware that there is lack of discount supermarket options for residents in Formby. The current cost-of-living crisis means many people are looking to make their money go further by purchasing better-value products. As the UK's leading, and cheapest, discount supermarket, Aldi believes it has an essential role to play in providing access to high-quality products at affordable prices.

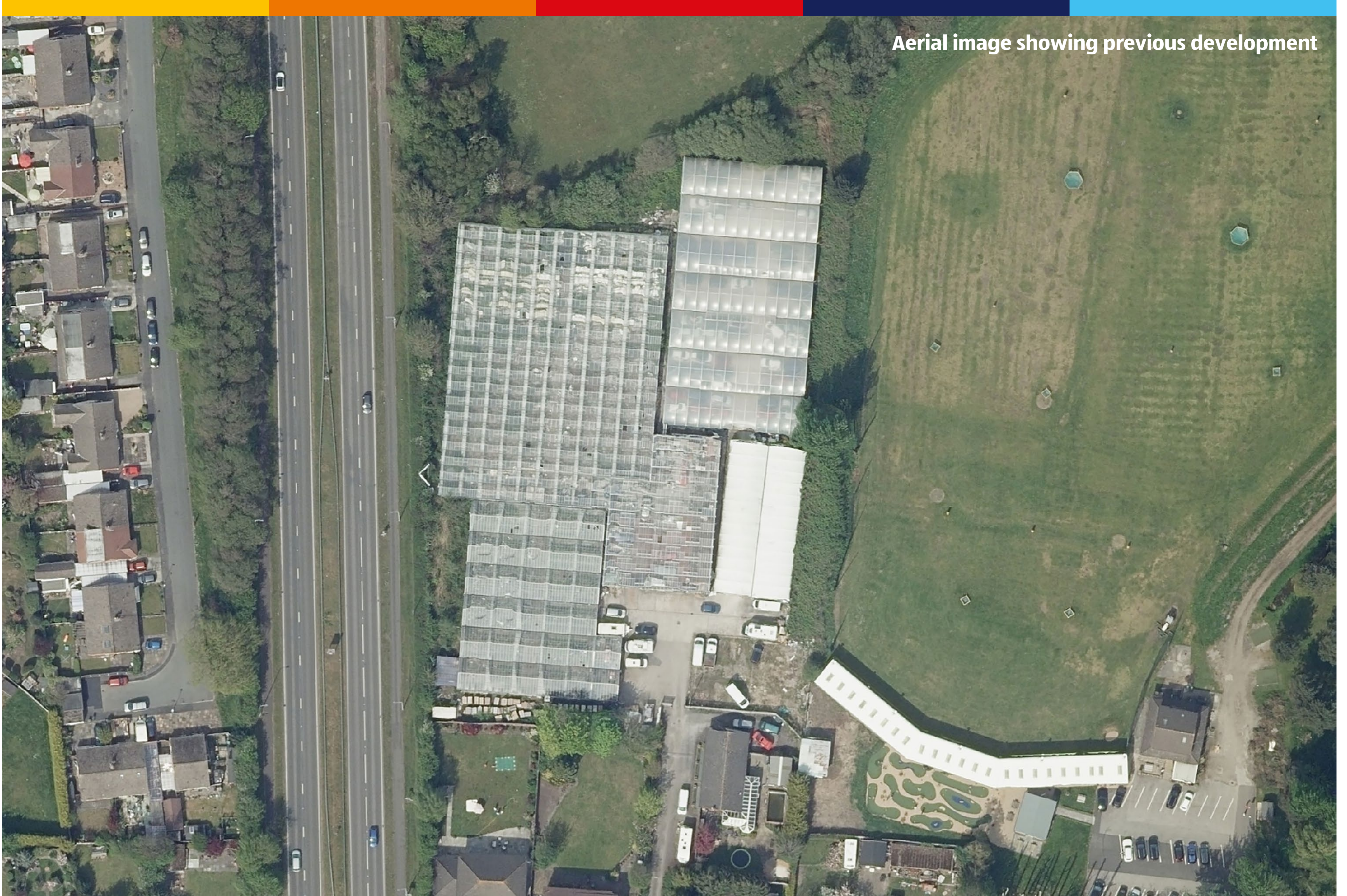
With our nearest stores both nearly six miles away in Thornton to the south and Birkdale to the north, many Aldi shoppers currently travel a considerable distance to access our products. A new Aldi food store for Formby will reduce travel times and increase competition providing local access to affordable food shopping.

On average, Aldi customers save between 30% and 40% on shopping without compromising on quality, with everyday items available at low prices.





The Site



A food store for the local community

Aldi has identified a site north of Moss Side in east Formby. As shown in the aerial image above, the site previously operated as a commercial plant nursery/garden centre. Having been closed for over a decade, some buildings have been demolished and those that remain are falling into disrepair.

The site holds existing planning consent for residential development and is currently used to store vehicles.

Although the site is brownfield and benefits from planning permission for future development, the land is located within the Green Belt. Aware that this can be a sensitive local issue, Aldi is keen to understand the views of the local community, before we submit a planning application.

The previous use along with the existing planning consent has set a precedent for the site's development.

Aldi believes that its proposals present an opportunity to improve recreational access to the Green Belt. This would be achieved through improved pedestrian and cycle links from Formby to the site and the nearby countryside.





About the proposal

A contemporary design

Our proposal will provide a high-quality and attractive scheme. The location and orientation of the store has been carefully planned to position it closer to the existing build area and provide good visibility onto Formby Bypass. To ensure an excellent long-term appearance, Aldi uses high-quality materials both inside and outside of its buildings.

The proposed food store has a contemporary design to complement its setting within Formby. The design includes vertical timber cladding at high level to create a softer appearance onto the bypass, with red brickwork at low level to ensure the scheme sits comfortably within its wider surroundings. The store will also utilise a range of sympathetic materials with large elements of shopfront glazing to create an active façade.

Landscaping

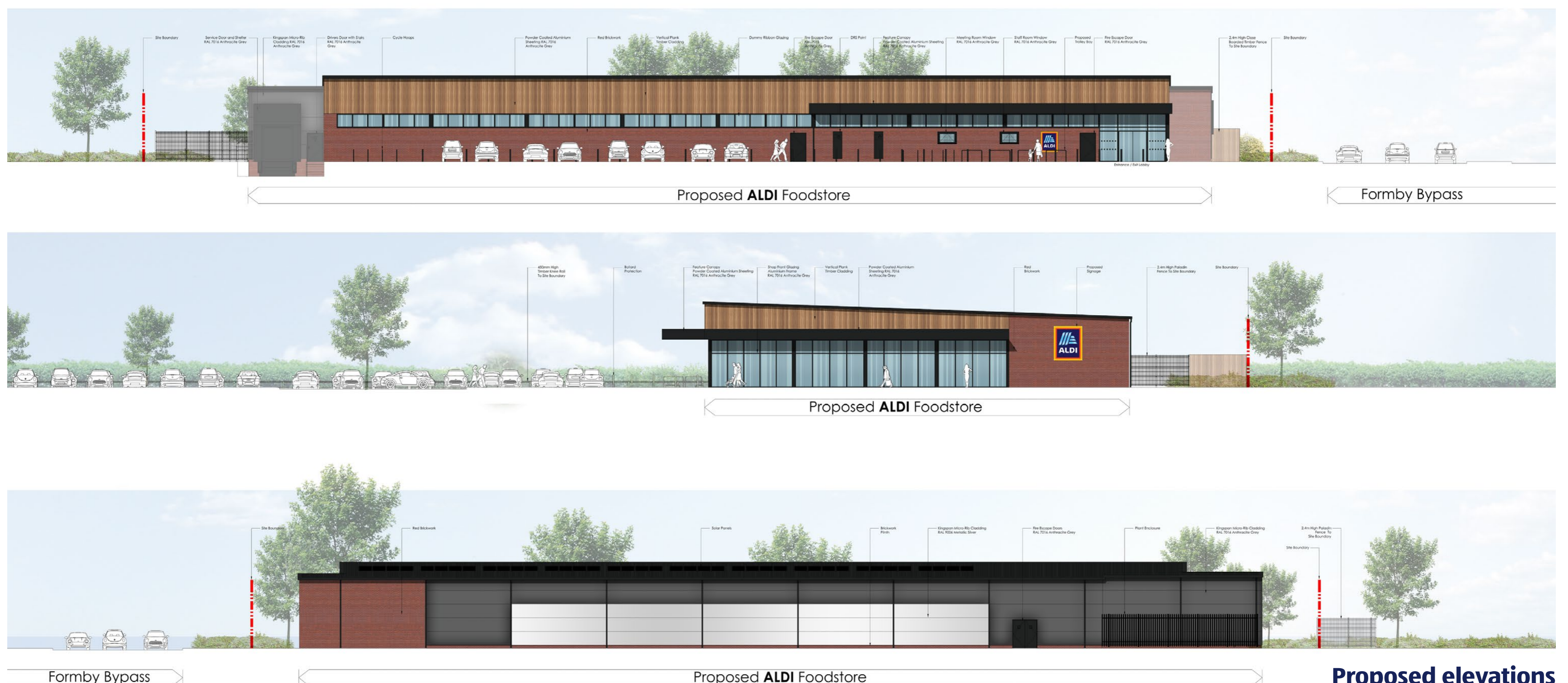
Aldi takes great pride in the quality and design of its stores, with landscaping a key part of creating an appealing and welcoming environment.

The majority of existing trees and vegetation buffer to the north of the site will be retained. A small area will have to be removed to allow for the new access road to site. Whilst this small area will be removed, a series of trees are proposed alongside new low-level landscaping to create an attractive site. There will also be a series of trees planted to the south of the site to create a buffer between the store and existing residential properties.

Sustainability

We are constantly working to reduce the impact that our business has on the environment and have developed a range of initiatives to ensure our existing and future stores foster and promote sustainability:

- We estimate the proposals would save 206,225km of car travel per year reducing CO2 emissions by around 32.73 tonnes per annum
- We have been carbon neutral since 2019, with 100% of energy purchased from renewable sources
- Our reduce, reuse, recycle Waste Strategy has resulted in us sending no waste directly to landfill since 2014
- We have committed to use 50% less plastic by 2025
- All new stores use heat recovery systems to recycle otherwise wasted machinery heat; in addition, our refrigerators are all fitted with doors; and we also use LED lighting throughout
- Our car parks are future proofed to provide additional electric vehicle charging spaces with this proposal including infrastructure for a further 20 spaces

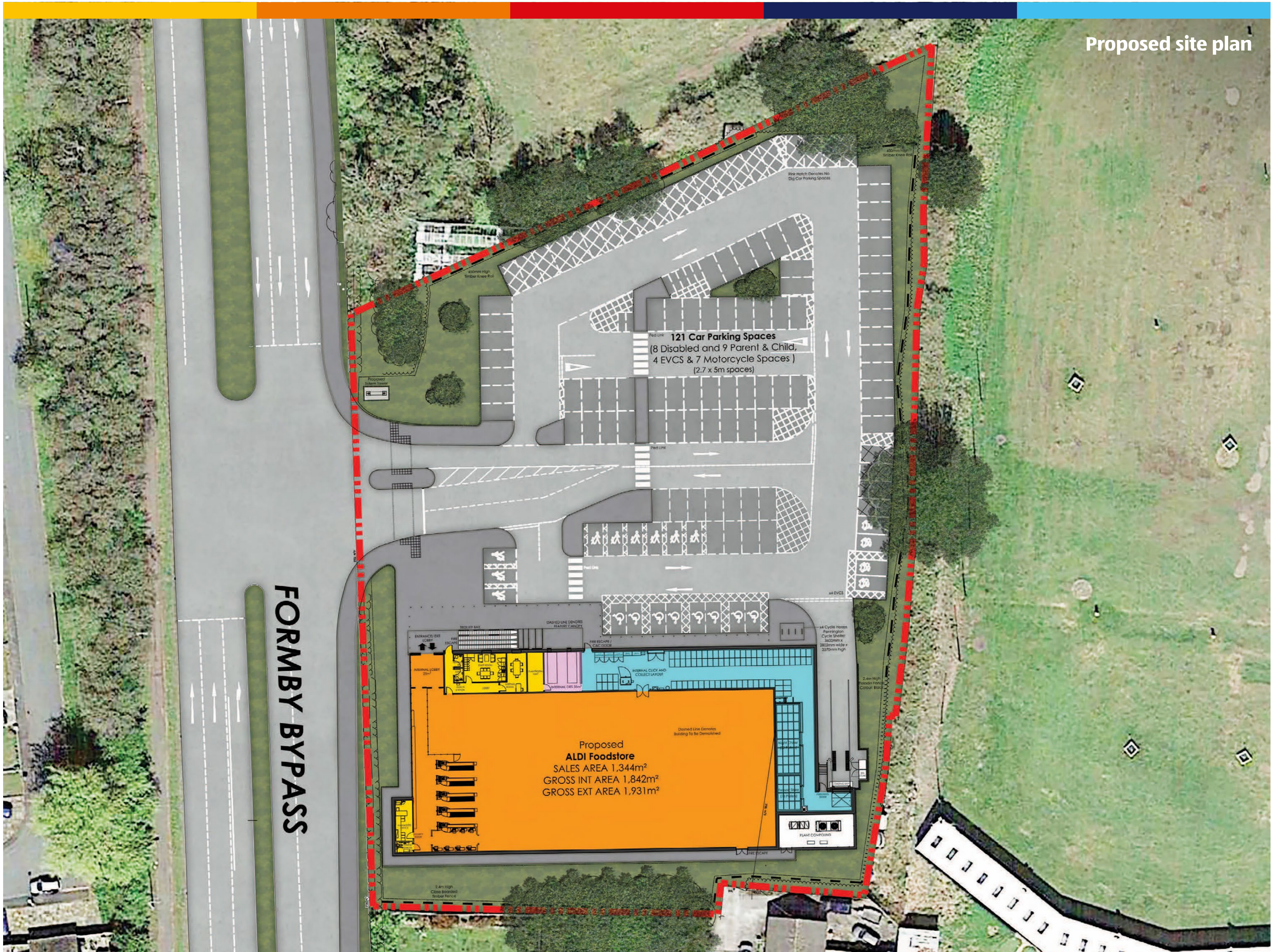


Proposed elevations





Highways & Car Parking



Transport and Enhanced Connectivity

Aldi's plans would deliver a signalised site access junction with improvements to pedestrian and cycle connectivity through the provision of a controlled staggered crossing along the alignment of the existing route across the Formby Bypass. This will provide safer routes to the proposed site as well as enhancing recreational connectivity to the Green Belt. Aldi also intends to relinquish the existing site access from Moss Side.

In considering this site we are preparing a Transport Assessment to evaluate local traffic flows in and around Formby Bypass with and without the proposed development. This will identify any impact on the operational performance of the local road network.

The proposed Aldi food store will provide 121 car parking spaces, including eight accessible bays, nine parent-and-child spaces, and eight covered cycle parking spaces. The car park would also include four electric vehicle charging points for opening.

Deliveries

Aldi stocks a carefully selected range of approximately 2,500 exclusive products, compared with supermarkets such as Asda or Tesco that stock over 20,000 lines. As a result, an Aldi food store will require only three to four deliveries per day.

We operate store deliveries outside peak transport hours, where possible. All manoeuvring takes place within the site with a delivery ramp arrangement removing the need for external activity. This system not only saves time, but also reduces any potential noise disturbance to neighbouring businesses and allows for a more efficient servicing process overall.





About us



Investing in communities

We are proud to be at the heart of local communities across the country. To continue our community-led culture, we have set out a number of “neighbour-friendly” practices:

- Aldi aims to recruit its store managers and store colleagues from the local area, which enables them to react quickly and sympathetically to any local issues
- Unlike most supermarkets, which operate extended or 24-hour opening periods, our stores typically open between 8am and 10pm Monday to Saturday, and between 10am and 4pm on Sundays
- Aldi only stocks around 2,500 exclusive products, compared to a typical supermarket which stock over 20,000. This means that customers to our stores often visit other nearby retailers to complete their shopping
- Aldi’s unique delivery system enables products to be transferred from the vehicle straight to store, without the need for external movement – minimising the potential for any disruption
- Aldi works with community engagement platform Neighbourly to pair local charities, community groups and food banks with its stores, to enable them to collect surplus food and perishable products up to seven days a week

Local Jobs

With up to 40 new full and part time roles available at our new Formby store, we are committed to providing jobs for local people.

Aldi’s rates of pay are significantly higher than the Government’s National Living Wage and also above the Living Wage Foundation’s recommended national rates. Store Assistants receive a minimum hourly rate of £11.90 nationally (£12.45 within the M25).

It is Aldi’s aim to recruit store colleagues locally for its new stores and, as a result, most live close to the store where they work. More information on career opportunities can be found at www.aldirecruitment.co.uk



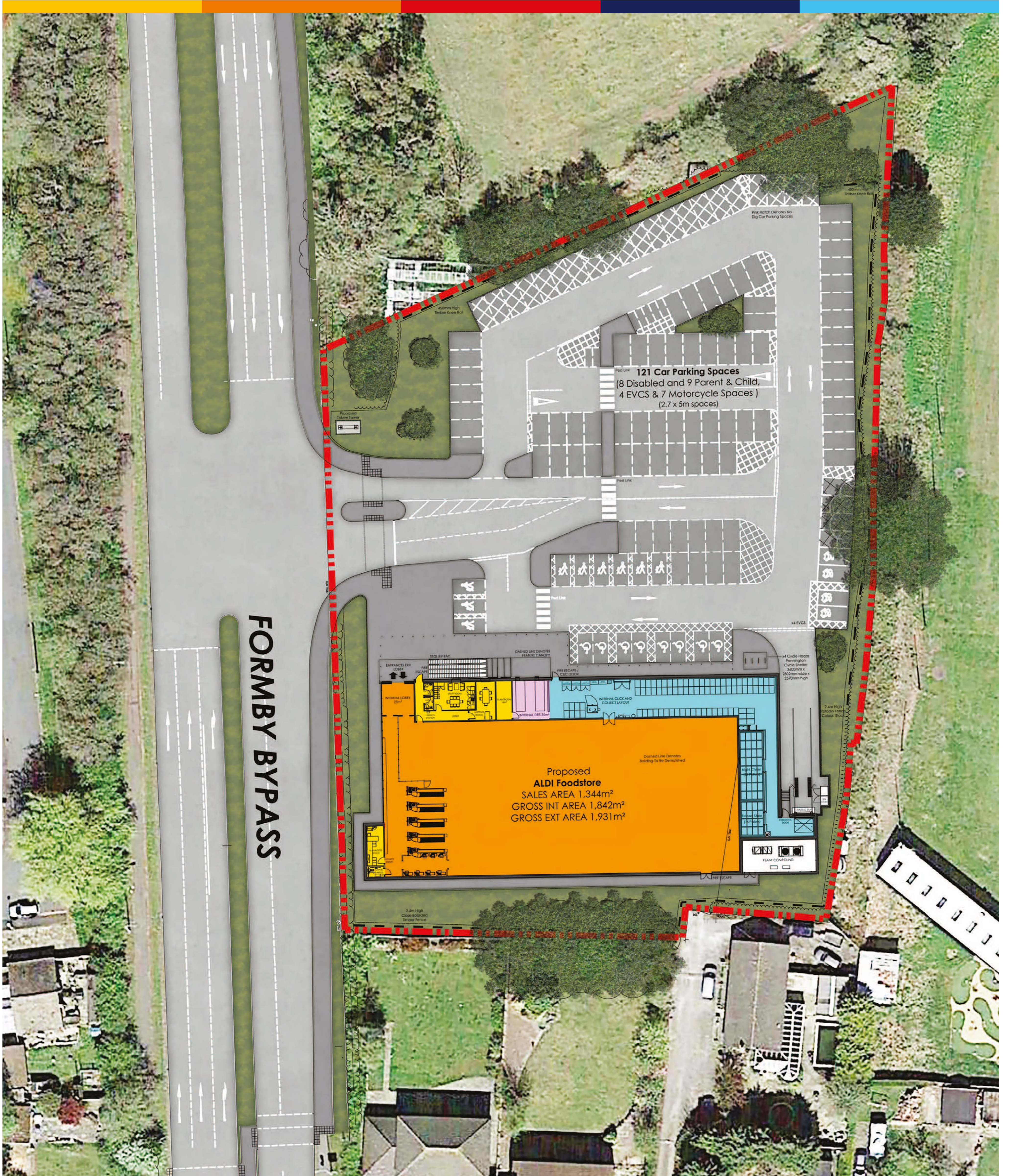


Aerial image showing previous development





Proposed site plan





Proposals for a **new Aldi store for Formby**



Computer Generated Image of the proposed store



Images showing current condition of site





Images showing current condition of site

