



Highways and Car Parking

Access and Parking

Access to the Aldi store for cars, motorcycles and bicycles will be from Europa Boulevard.

The new Aldi store will provide free customer parking for 125 cars, including eight disabled bays, nine parent-and-child spaces, 14 covered cycle spaces and six motorcycle spaces.

The proposal also includes the installation of two charge points for 4 electric cars with passive infrastructure for further spaces which can be brought forward based on future demand and technology.

Pedestrian access would be via new footpaths to the north of the site, linking to Europa Boulevard and the wider estate.

Traffic

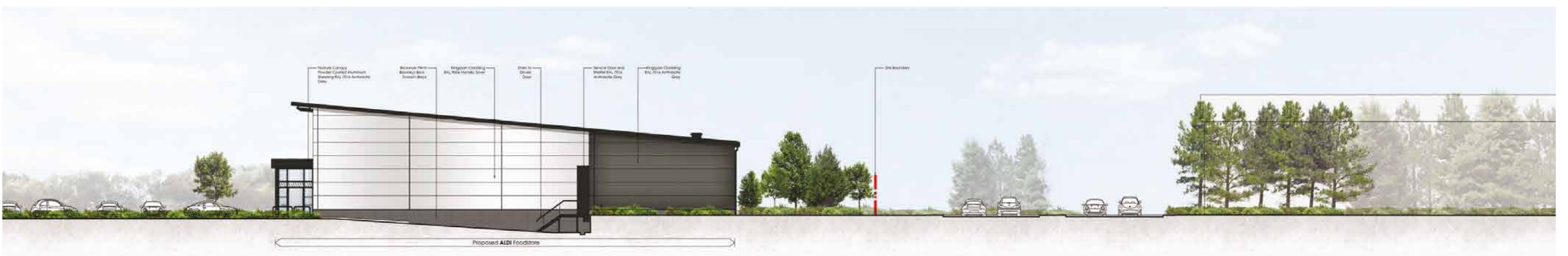
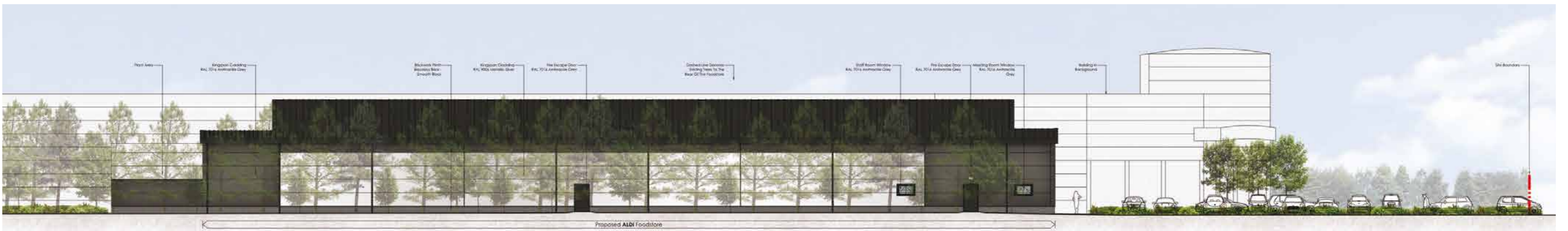
Aldi's project team has undertaken a Transport Assessment as part of the planning application to ensure the proposed food store does not have an adverse impact on the local road network. The scope of this assessment has been agreed with Warrington Borough Council's Highways Officer.

Traffic surveys have been undertaken to evaluate the levels of traffic with and without the proposed development as well as considering upcoming developments in the local area. The assessment has found that, the scheme would have no material impact on the operational performance of the local road network.

Deliveries

Aldi stocks a carefully-selected range of approximately 1,800 lines, compared with supermarkets such as Asda or Sainsbury's that stock over 20,000 lines. As a result, an Aldi food store will require only three to four deliveries per day.

We operate store deliveries outside peak transport hours. All manoeuvring takes place within the site, and a unique delivery ramp arrangement removes the need for external activity. This process is not only efficient, but also reduces any potential noise disturbance to neighbouring properties.



Proposed elevations

