



Design and Landscaping

Design

The aim of our proposal is to provide a high-quality and attractive food store for the community of Maghull. We have carefully designed our proposal to ensure the scheme would sit comfortably within its wider surroundings.

Our proposal for the Aldi store will provide a high-quality and attractive scheme. To ensure an excellent long-term appearance, Aldi uses high-quality materials both inside and outside its buildings. The new Aldi store will utilise a combination of anthracite grey and metallic silver cladding with a charcoal brickwork plinth. It will have large elements of glazing along the eastern elevation facing the A59 Northway and high-level ribbon windows to the southern elevation, together with a contemporary pressed metal feature canopy.

To ensure a high-quality appearance over the long term and to minimise maintenance costs, Aldi uses high-quality materials both inside and outside its buildings.

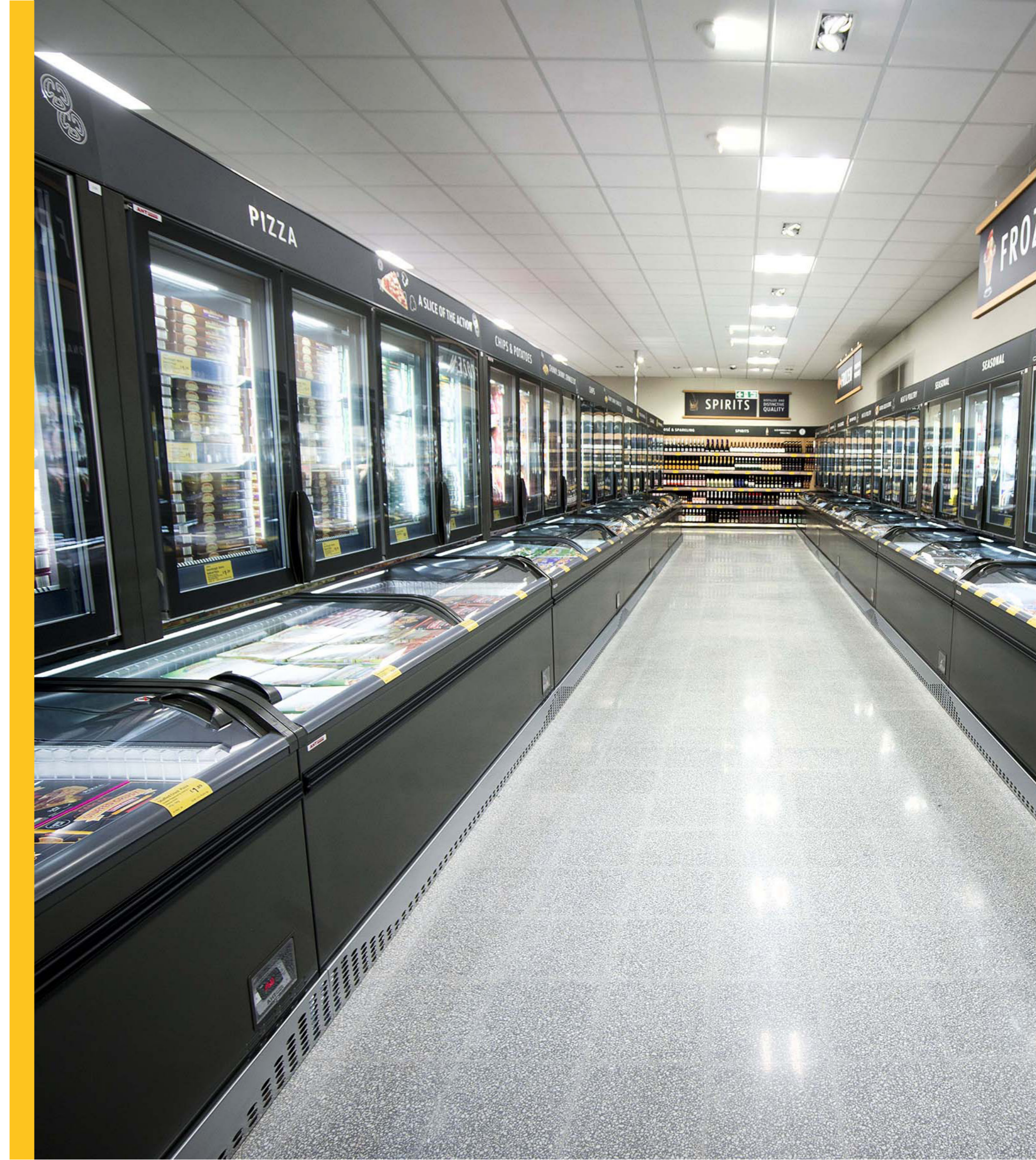
Sustainability

Aldi is already meeting high standards of energy efficiency and is committed to responsible energy usage. Since 2017, we use only 100% renewable electricity to power our stores.

Aldi only uses environmentally-friendly, energy-efficient refrigeration and lighting. A heat recovery system from the refrigeration condensers provides almost all heating for the store, re-using otherwise wasted machinery heat.

Aldi is committed to using materials for the development of our stores that perform well with regard to the environment, either through composition or manufacture. We aim to minimise energy use in producing and transporting building materials, using recycled material from local sources as far as possible, and by choosing materials with low embodied energy.

Where possible, materials required for the construction of a development will be procured from locally available stock. Where space exists, recyclable waste would be sorted on site and taken to appropriate recycling facilities.



Landscaping

Aldi takes great pride in the quality and design of its stores, with landscaping a key part of creating an appealing and welcoming environment.

The Aldi project team is working with Sefton Council in order to retain as many trees as possible. Aldi will also provide and maintain attractive landscaping around the site to enhance the surrounding area.

Aldi will work closely with local residents to ensure that the landscaping protects their boundaries and keeps their properties well screened.

