



A new Aldi food store in Market Deeping

Computer Generated Image of the proposed store



Welcome to our virtual exhibition

Aldi, the award-winning discount food retailer, is bringing forward proposals for a new store in Market Deeping. This investment would support wider redevelopment of the site off Godsey Lane providing two additional retail units alongside the new high-quality food store.

The new Aldi food store would create up to 40 full and part-time jobs, with further jobs created through the two retail units and during construction and via the supply chain.

Before submitting a planning application to South Kesteven District Council, Aldi wants to know what the local community think to its plans, and we look forward to hearing your thoughts and feedback.

Investing in the centre of Market Deeping

As customers continue to look for better-value products to help make their money go further, it is important that residents have access to a wide range of shopping facilities.

At present, the town does not have a discount food store with many residents traveling outside of the area to complete their weekly food shopping. These plans would breathe new life into a prominent site at the centre of the town, enhancing its appearance and appeal to shoppers. An Aldi food store in this location will improve customer choice, reduce travel times, and encourage linked trips to other businesses in the town helping to retain spending in the area.

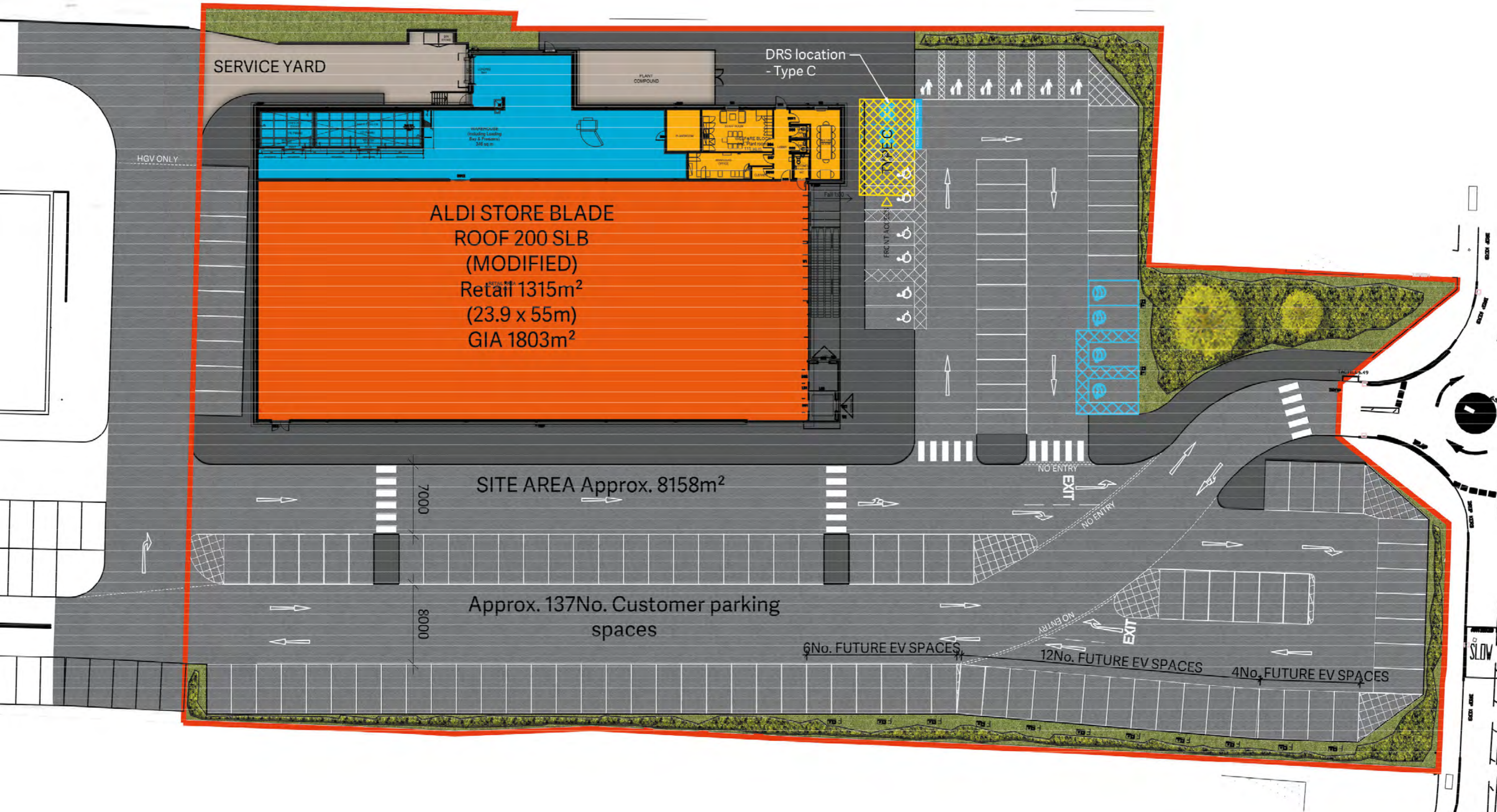
Aldi is well known for selling a variety of high-quality products at discounted prices. Our customers save between 30% and 40% on their shopping without compromising on quality, with everyday items available at low prices.





Our Proposal

Proposed Site Plan



The site would deliver a new Aldi food store with a net sales area of 1,315m², alongside 138 car parking spaces including, dedicated disabled and parent & child bays, as well as electric vehicle charging points. The plans would also provide two new town centre retail units adjacent to the store.

The proposed store would stock the same range of high-quality, award-winning products found at other Aldi stores. The floor space would mainly be used for food goods, with a smaller range of non-food products, alongside servicing and staff areas.

Our proposal to invest in Market Deeping will:

- Redevelop a prominent town centre site in the town enhancing its appearance and appeal for shoppers
- Deliver a brand-new Aldi food store with a net sales area of 1,315sq m
- Create up to 40 new jobs and additional employment opportunities during construction of the store and through the supply chain. Aldi's in-store jobs pay industry-leading rates above the National Living Wage with access to training and career development opportunities
- Represent a £5m+ investment into the local economy
- Offer 138 car parking spaces including six accessible, six parent & child and four electric vehicle charging bays
- Keep spending within the town and encourage linked trips to local businesses
- Provide free car parking at the Aldi store for up to 90 minutes
- Include two further town centre retail units supporting additional employment opportunities





Design & Landscaping

Design

Aldi plans to introduce a contemporary food store, designed to complement its setting and enhance the appearance of the site.

Aldi uses high-quality materials both inside and outside its buildings to create modern shopping environment for customers, offering a quality design and a crisp, clean look to the building.

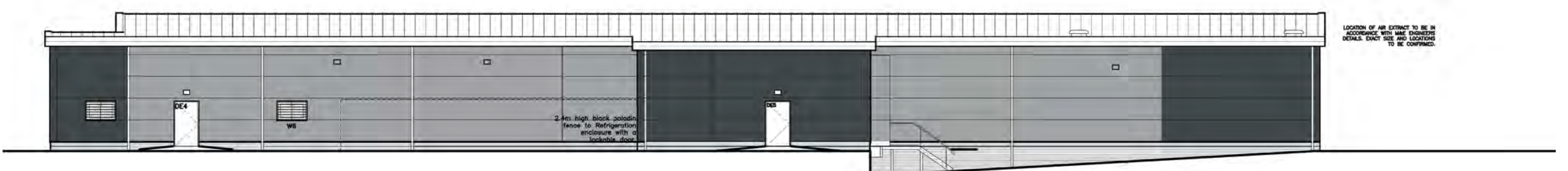
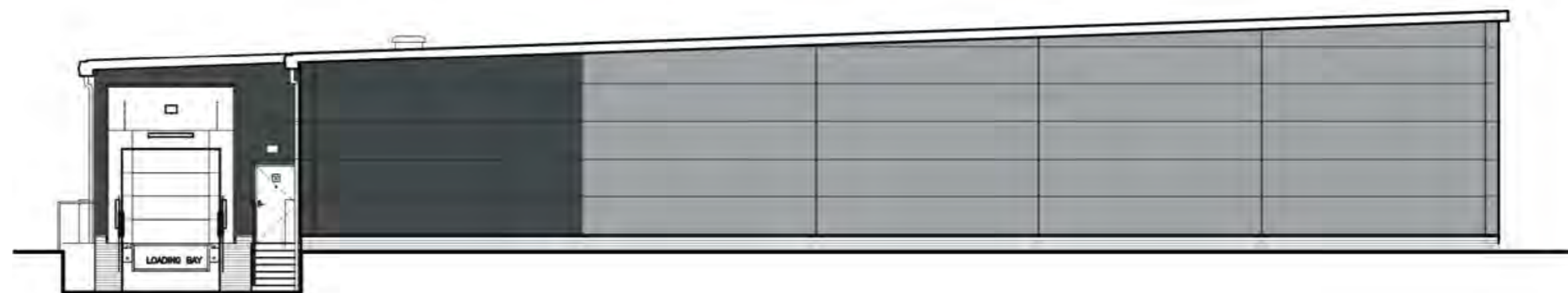
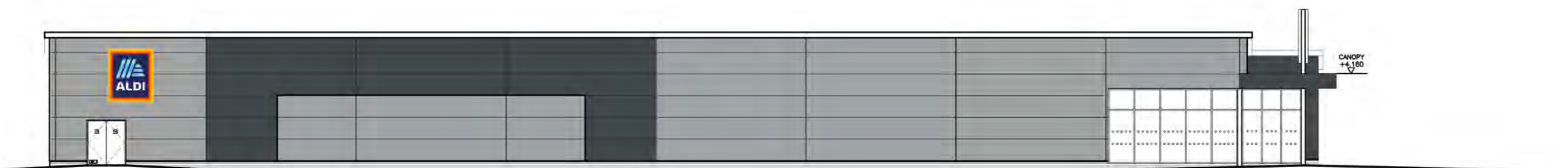
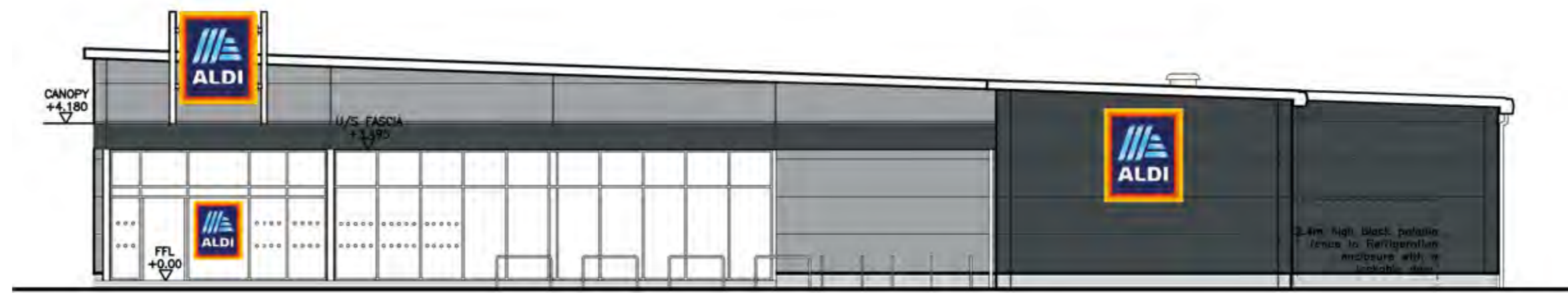
Sustainability

Aldi is already meeting high standards of energy efficiency and is committed to responsible energy usage. Since 2017, we use only 100% renewable electricity to power our stores.

Aldi uses environmentally-friendly, energy-efficient refrigeration and lighting. A heat recovery system from the refrigeration condensers provides almost all heating for the store, re-using otherwise wasted machinery heat.

Aldi is committed to using materials for the development of our stores that perform well with regard to the environment, either through composition or manufacture. We aim to minimise energy use in producing and transporting building materials, using recycled material from local sources as far as possible, and by choosing environmentally friendly materials.

Where possible, materials required for the construction of this development will be procured from locally available stock. Where space exists, recyclable waste would be sorted on site and taken to appropriate recycling facilities.



Proposed elevations





Highways and Car Parking

Access and Parking

Access to the store for cars, pedestrians and cyclists will be provided from Godsey Lane, with the existing pedestrian link to the site from High Street.

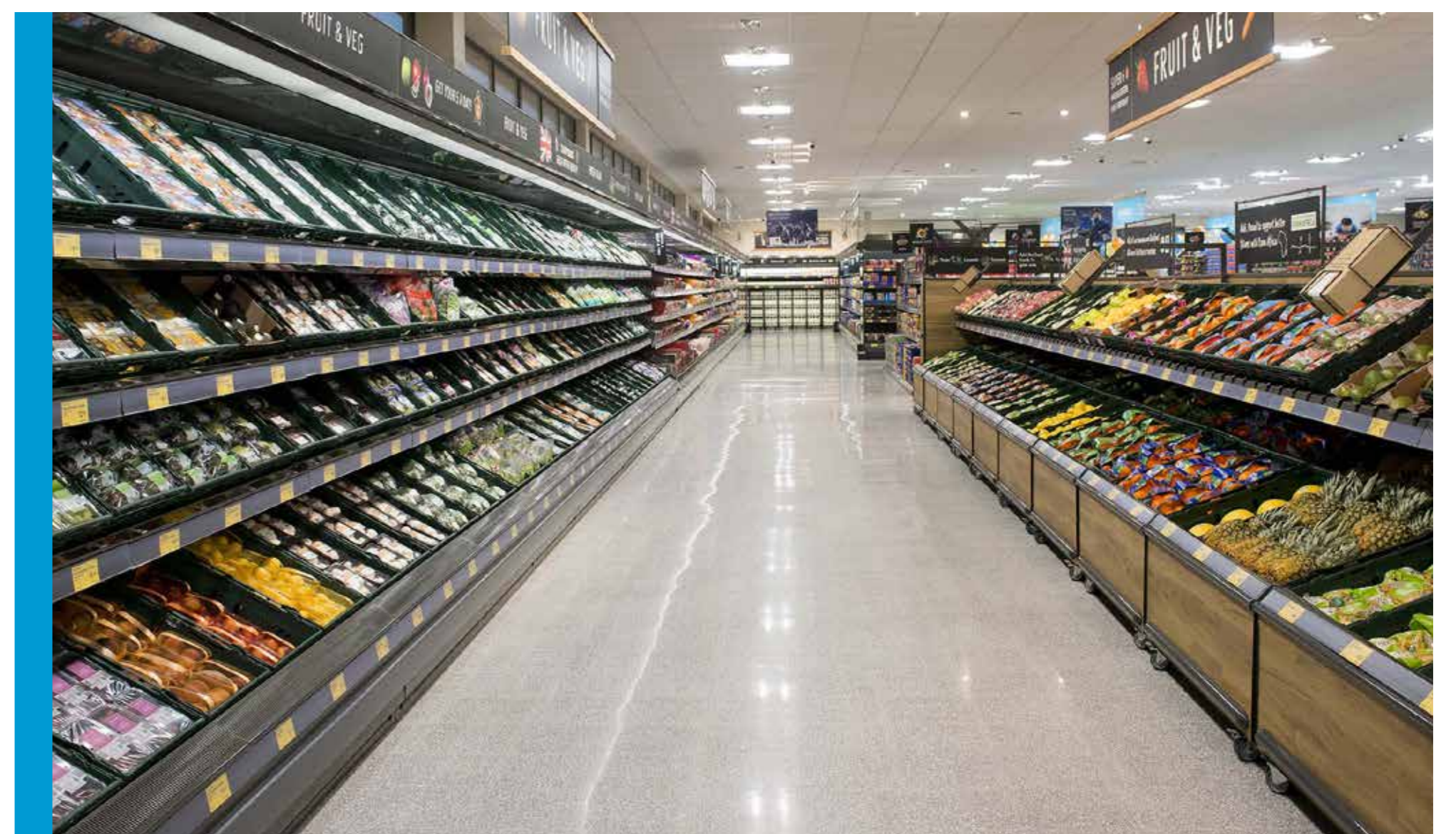
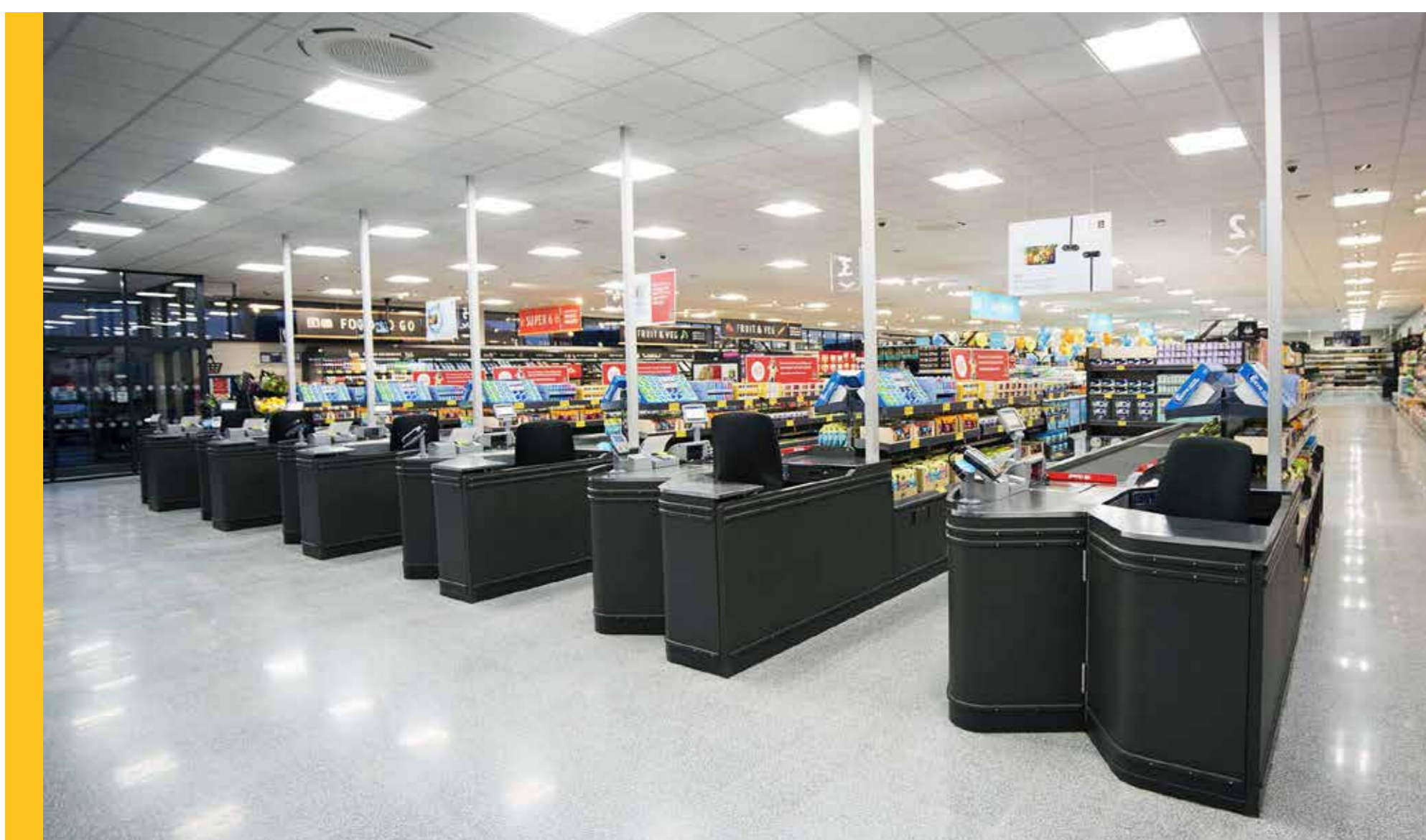
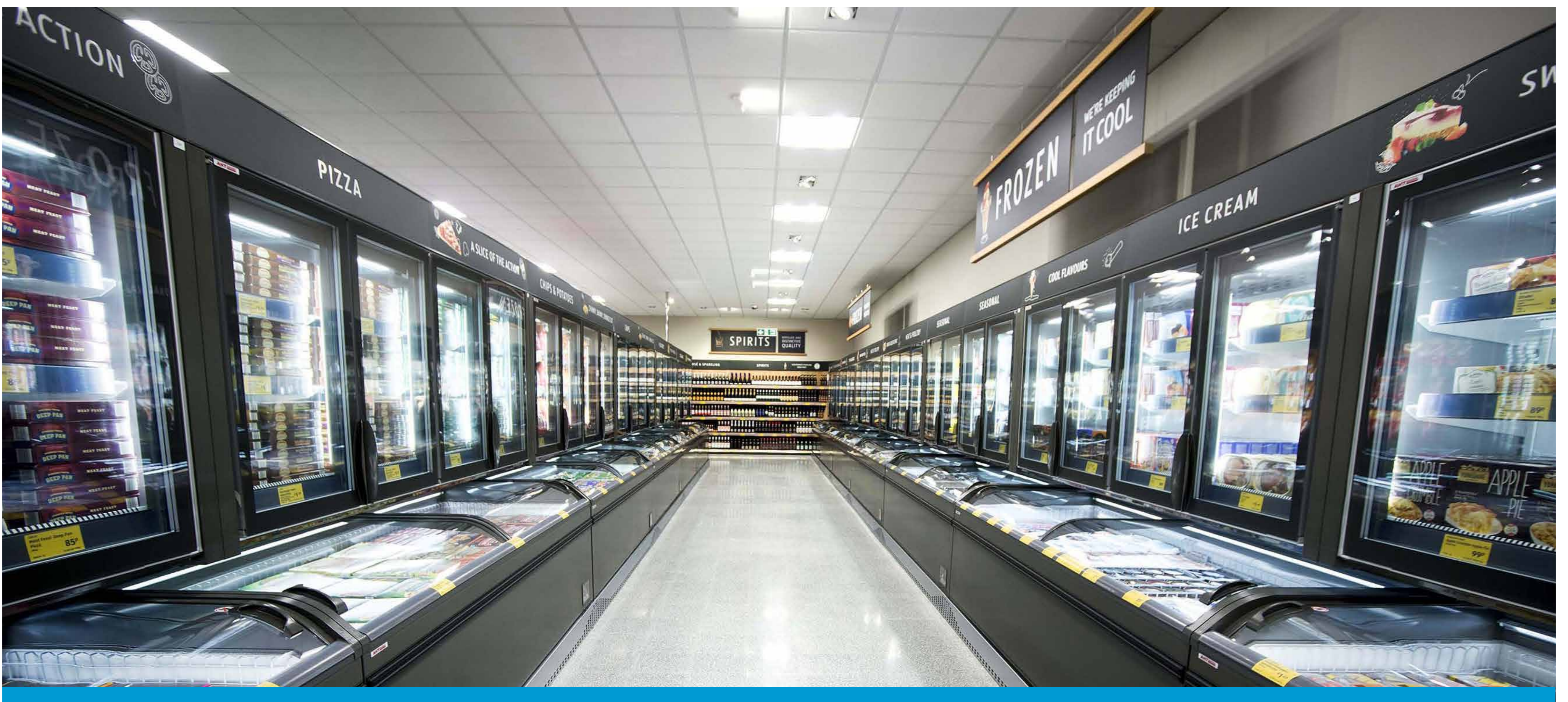
The new store will provide free parking for 138 cars, including six disabled bays and six parent-and-child spaces. The proposal also includes the installation of four free electric vehicle charging points with passive infrastructure for further spaces which can be brought forward based on future demand and technology

Deliveries

We operate store deliveries outside peak transport hours. All manoeuvring takes place within the site, and a unique delivery ramp arrangement removes the need for external activity. This process is not only efficient, but also reduces any potential noise disturbance to neighbouring properties.

Traffic

Before submitting a planning application, Aldi's project team will undertake a Transport Assessment to understand what impact the food store will have on the local road network. The scope of this assessment will be agreed with the local highway authority. Traffic surveys will also be undertaken to evaluate the levels of traffic with and without the proposed development as well as considering upcoming developments in the local area. These assessments will identify whether any mitigation works are necessary to accommodate the plans.





About us

Part of your community

We are proud to be at the heart of local communities across the country. To continue our community-led culture, we have set out a number of “neighbour-friendly” practices:

- We aim for our store managers to be familiar with the local area, allowing them to react quickly and sympathetically to local issues when they arise
- We use a unique delivery system, enabling products to be transferred directly from the vehicle straight into the store, without the need for external movement of goods. This reduces external activity and limits any potential disruption
- Unlike most supermarkets, which operate extended or 24-hour opening periods, our stores typically open between 8am and 10pm Monday to Saturday, and between 10am and 4pm on Sundays
- We are committed to being responsible neighbours, and will work closely with the local community to ensure that any disturbance is kept to a minimum, from construction right through to when the store is open

Local Jobs

With up to 40 new full and part-time roles available at our Market Deeping store, we are committed to providing jobs for local people.

With one of the best working environments in the UK and one of the highest rates of pay in the retail sector, this new store will provide local people with Aldi’s training and career growth opportunities.

Aldi’s rates of pay are significantly higher than the Government’s National Living Wage and also above the Living Wage Foundation’s recommended national rates.





A new Aldi food store in Market Deeping



CGI of the proposed store



Site plan of proposed new Aldi store

