



A replacement Aldi food store for Market Harborough

Computer Generated Image of the proposed store



Welcome to our virtual exhibition

Award-winning discount food retailer, Aldi, is bringing forward a planning application for a new store on Rockingham Road, Market Harborough.

If approved, the new store would replace Aldi's existing store on Springfield Street, providing customers in the town with a more spacious and modern retail environment to complete their shopping.

This multi-million pound investment will rejuvenate a brownfield site off Rockingham Road and transform it into a high-quality community facility.

Thank you for visiting our virtual public exhibition today.

If you have any comments or questions, please get in touch by emailing feedback@consultation-online.co.uk or calling the freephone information line on **0800 298 7040**.

An improved shopping experience

Our Springfield Street store is too small, is not in keeping with Aldi's modern style and no longer meets the expectations of our customers.

As such, we will shortly be submitting a planning application to Harborough District Council that would see the current store relocated.

Inside the new store, shoppers will have more space, with a modern design that makes access to goods quicker and easier than ever before.





Our Proposal



Site plan

A local community facility

Aldi is proud to invest in local communities across the UK. We take our role seriously and understand the impact our work can have on people who need support.

- Aldi recently announced plans to increase the amount of food and drink it buys from British suppliers over the next five years by £3.5bn a year.
- In 2021, we pledged to donate 10 million meals to families in need, to help combat hunger's devastating effects.
- We are proud to accept Free School Meal vouchers for the purchase of food and groceries.

Our proposal for Market Harborough offers:

- Represents a £5m investment into the local economy
- A brand new, Aldi food store with a net sales area of 1,315 sqm
- A single-storey building facing Gores Lane with double height frontage
- Wider aisles and customer toilets (including baby changing) for an improved customer experience
- 129 car parking spaces including 6 dedicated disabled bays, 6 parent & child bays and 2 click and collect bays
- 4 electric vehicle charging points with additional infrastructure installed for a further 17 to be opened for use in the future
- Free car parking at the Aldi store for up to 90 minutes with access off Rockingham Road
- The creation of up to 15 new jobs for local people
- Additional employment opportunities during construction of the store and through the supply chain





Design & Landscaping

A modern design

The proposed food store would have a modern design, providing an improved shopping environment.

Designed to a high standard, the glass frontage on Rockingham Road would give a crisp, clean look to the building.

Landscaping

Aldi takes great pride in the quality and design of its stores with landscaping a key part of our plans. The view from Rockingham Road would be greatly improved, with a new glass frontage as well as tree and shrub planting improving the whole outlook of this local area.

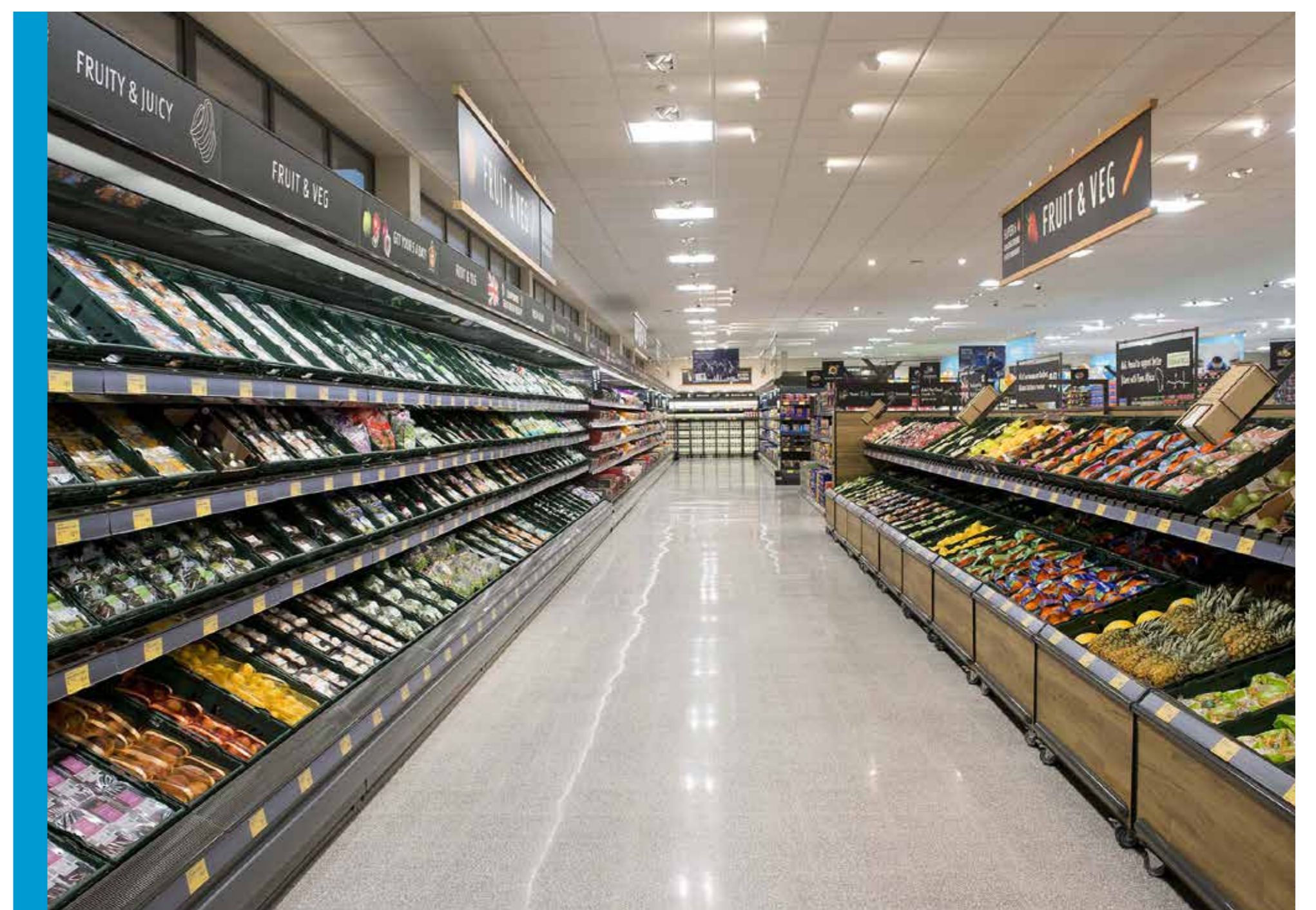
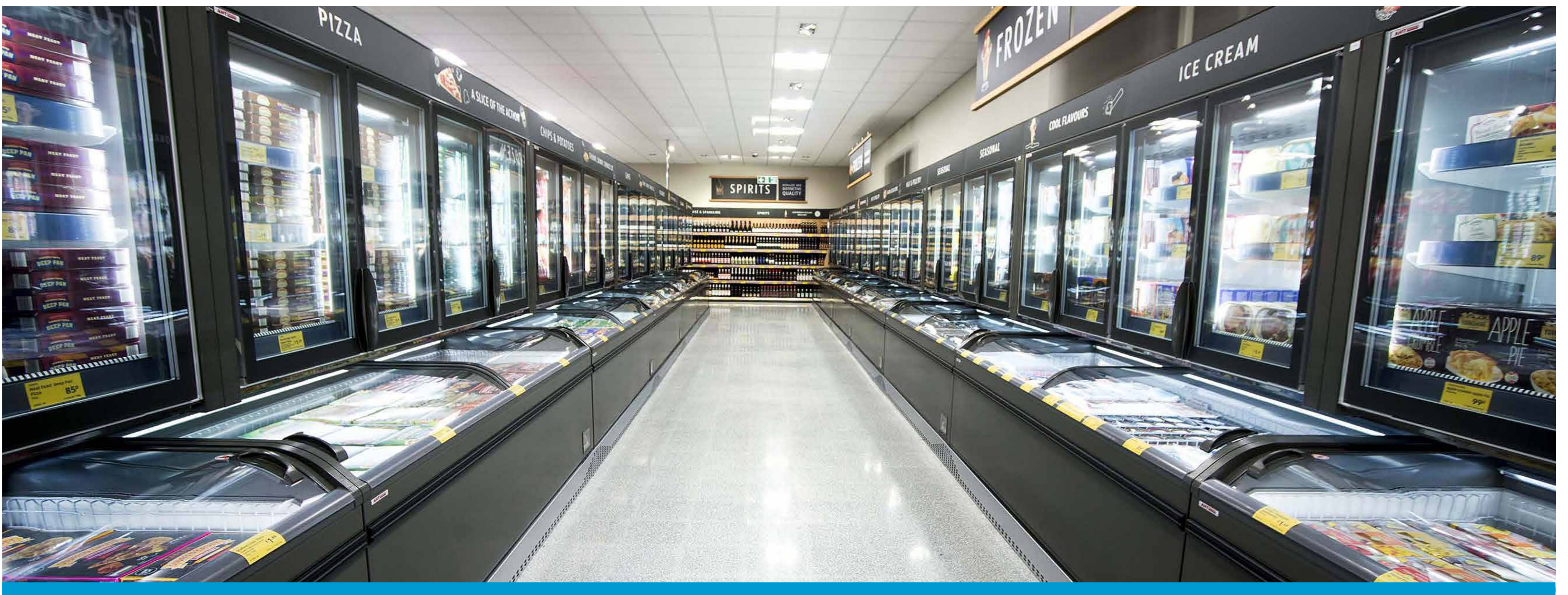
On the site itself, low level shrubs and new tree planting will help to break up the site, creating a welcoming environment for shoppers.

Energy efficiency

Aldi is already meeting high standards of energy efficiency and is committed to responsible energy usage.

All Aldi stores use environmentally friendly, energy-efficient refrigeration and LED lighting both internally and externally.

A heat recovery system from the refrigeration condensers provides almost all the heating for our stores, re-using otherwise wasted machinery heat.





Highways and Car Parking

Parking & Access

Access to the Aldi store for cars, bicycles and pedestrians will be from a priority T-junction on Rockingham Road – located to the west of the existing access, which will be removed.

The new Aldi store will provide free customer parking for 90 minutes with 129 spaces, including 6 disabled bays, 6 parent & child bays and 2 click-and-collect bays.

There will also be 4 electric vehicle charging points with additional infrastructure installed for a further 17 to be opened for use in the future.

Aldi intends to provide improved pedestrian and cycle facilities to enable local people to be able to access the store safely.

Traffic

Aldi is undertaking a Transport Assessment as part of the planning application. This will establish the traffic effects of the proposed development and consider whether there is a need for mitigation.

The assessment will look at the operation of local roads both with and without the proposed development in place. The scope of this assessment will be agreed with the Council's highways team.

Deliveries

Aldi stocks a carefully selected range of approximately 1,800 core lines, compared to a typical supermarket which stocks 15,000 - 40,000. This means Aldi food stores only need around 3-4 deliveries per day.

Delivery vehicles will also access the site via Rockingham Road. We aim to operate store deliveries outside of peak transport hours where possible.

All manoeuvring takes place within the site, and a unique delivery ramp arrangement removes the need for external activity.

This process is not only efficient, but also reduces any potential noise disturbance to neighbouring properties.

Proposed elevations





About us

Part of your community

We are proud to be at the heart of local communities across the country. As part of our community-led culture, we have set out a number of “neighbour-friendly” practices.

- Aldi aims to recruit its store managers and staff from the local area, which allows them to react quickly and sympathetically to any local issues
- Unlike most supermarkets, which operate 24-hour opening periods, our stores typically open between 8am and 10pm Monday to Saturday, and between 10am and 4pm on Sundays
- Aldi only stocks around 1,800 core lines, compared to a typical supermarket which stocks 15,000 – 40,000, meaning Aldi food stores only need around 3-4 deliveries per day
- Aldi’s unique delivery system enables products to be transferred from the vehicle straight to store, without the need for external movement - minimising the potential for any disruption
- We are committed to being responsible neighbours, and work closely with the local community to ensure that any disturbance is kept to a minimum, from construction right through to when the store is open

Local Jobs

The new Aldi food store will secure existing jobs at our Springfield Street store and create up to a further 15 job opportunities for local people.

Aldi’s rates of pay are significantly higher than the Government’s National Living Wage and also above the Living Wage Foundation’s recommended national rates. Store Assistants receive a minimum hourly rate of £9.55.

It is Aldi’s aim to recruit staff locally for its new stores and, as a result, most staff live close to the store where they work.

More information on career opportunities can be found at www.aldirecruitment.co.uk





A new Aldi food store on Rockingham Road, Market Harborough

Computer Generated Image of the proposed store





Site plan of proposed new Aldi store

