



Proposals for a new Aldi store for Dale Road, Matlock



Computer Generated Image of the proposed store

Welcome to this exhibition

Aldi, the award-winning discount food retailer, is bringing forward proposals for a new food store on Dale Road in Matlock.

Aldi has long wanted to expand the offer of its amazing value and choice to the residents of Matlock, and this site on Dale Road is the ideal location.

The proposals would provide an attractive, modern Aldi food store for Matlock, in a convenient location.

If approved, the store would create up to 40 new full and part-time jobs for local people, alongside further opportunities associated with construction and the supply chain.

Improved choice for Matlock

By providing real affordable choice, a new Aldi food store in Matlock would help ease the impact of the current cost-of-living crisis. The new store would provide customers with better value products to help make their money go further.

Not many residents of Matlock currently have access to a discount food retailer. The introduction of a new Aldi food store in Matlock would improve the immediate local retail offering, creating more competition and improving choice for the local community.

Aldi is well known for selling a variety of high-quality products at the lowest prices. Aldi customers can make significant savings on their shopping without compromising on quality, with everyday items available at unbeatable prices.

Community consultation

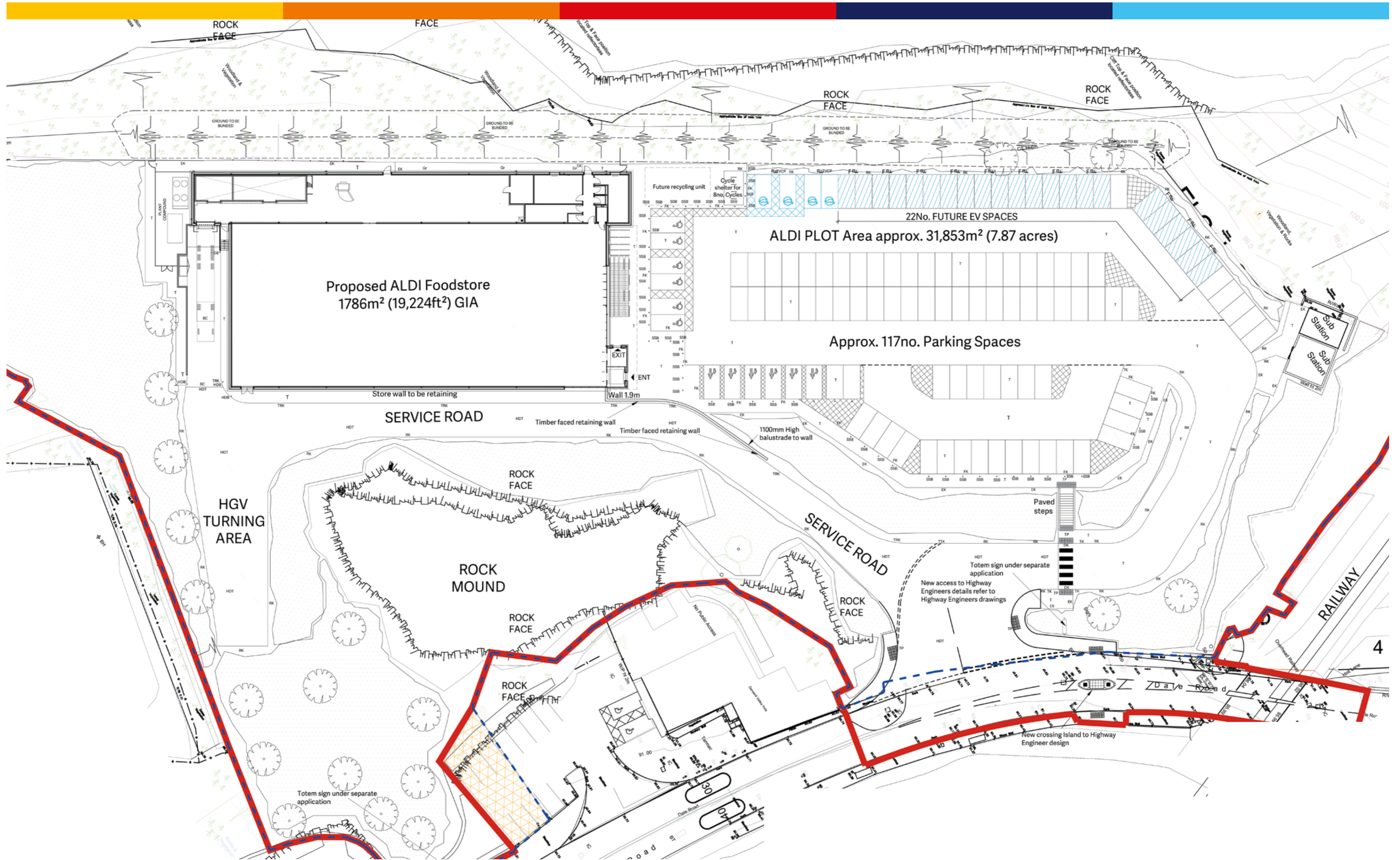
Thank you for visiting the community consultation today. Whether you have joined online or in-person, Aldi look forward to hearing your thoughts and feedback on the proposals. Comments will be accepted until midnight on **Friday 15th December 2023** and will be used to inform Aldi's planning application.

If you have any further questions, please feel free to get in touch by emailing feedback@consultation-online.co.uk or calling the freephone information line on **0800 298 7040**.





Aldi's Proposal



A local community facility

Aldi is proud to invest in local communities across the UK. Aldi takes its role seriously and understands the impact their work can have on people who need support.

Aldi plans to increase the amount it spends with British suppliers by £3.5bn a year by 2025.

Aldi works with the community engagement platform Neighbourly to help combat hunger's devastating effects, as it continues to fight against child food poverty.

Aldi is proud to accept Free School Meal vouchers for the purchase of food and groceries.

Aldi's proposals for Matlock offers:

-  An investment of **£7+ million** into the local economy.
-  A brand-new discount Aldi food store with a net sales area of 1,315 sqm.
-  Creating up to **40 new full and part-time jobs**, recruited locally, and paid at Aldi's industry-leading rate above the Real Living Wage.
-  **117** free-to-use car parking spaces at the store, including **6** accessible spaces, **6** parent-and-child spaces included.
-  **4** electric vehicle charging points, with additional infrastructure installed to deliver a further **22** charging points in the future.
-  Additional employment opportunities provided during construction and in the supply chain.
-  Attractive landscaping incorporated around the site to mitigate the store's visual impact.





Highways and Car Parking



Highways & Traffic

Aldi is undertaking a Transport Assessment as part of its planning application to ensure the proposed food store does not have a significant impact on the local road network.

This assessment will look at the operation of local roads both with and without the proposed redevelopment in place.

Aldi has recently commissioned surveys of traffic conditions on local roads following the completion of roadworks in Matlock town centre, in order to ensure its assessment is accurate and up-to-date.

Parking

The new Aldi store will provide free customer parking for **117** cars, including **6** accessible bays and **6** parent-and-child spaces.

4 electric vehicle charging spaces will be provided, as well as additional infrastructure to provide a further **22** electric vehicle charging points in the future.

Access

Vehicular access to the new Aldi store will be via Dale Road at the edge of Matlock.

The store will be well connected by public transport, located near the Boat House Bus Stop, served by the 110, 440, and X17 buses.

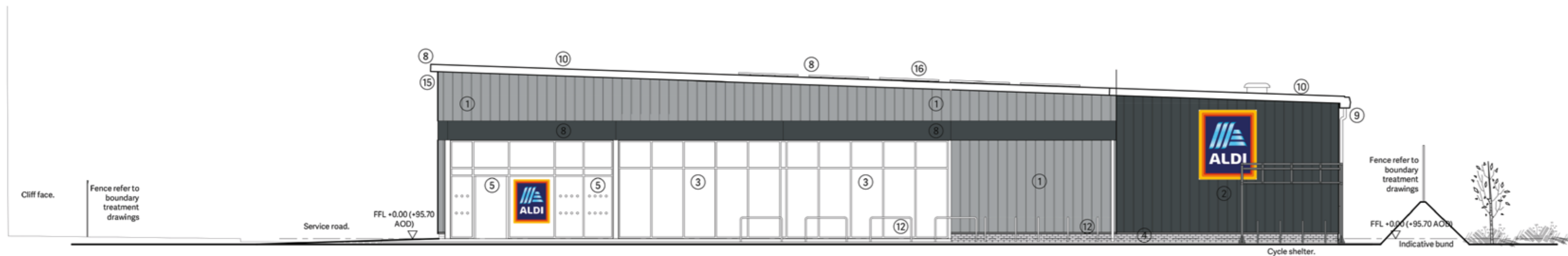
Deliveries

Aldi stocks a carefully selected range of approximately 2,500 exclusive products, compared with supermarkets such as Sainsbury's which stock over 20,000 lines. As a result, an Aldi food store will require only three to four deliveries per day.

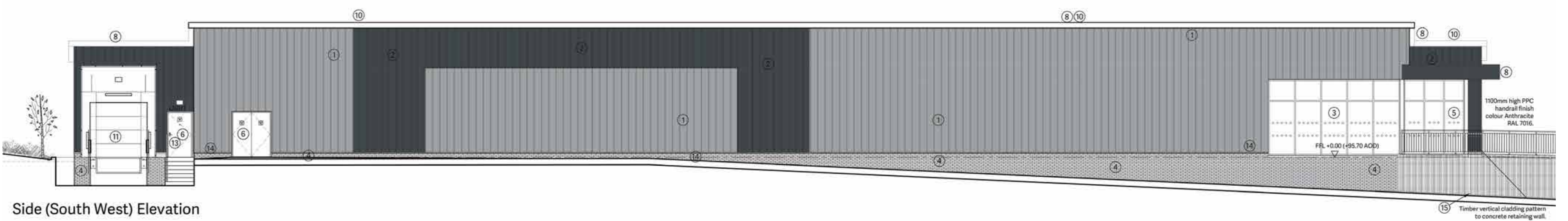
Aldi operate store deliveries outside peak transport hours, wherever possible. All manoeuvring takes place within the site, and an efficient delivery ramp arrangement removes the need for external activity. This process not only saves time, but also reduces any potential noise disturbance to neighbouring businesses.



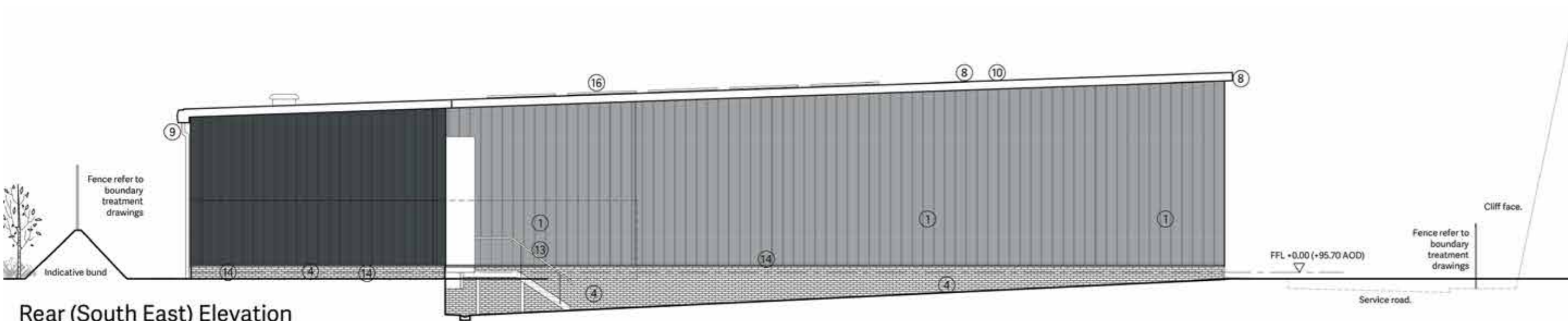
Design & Landscaping



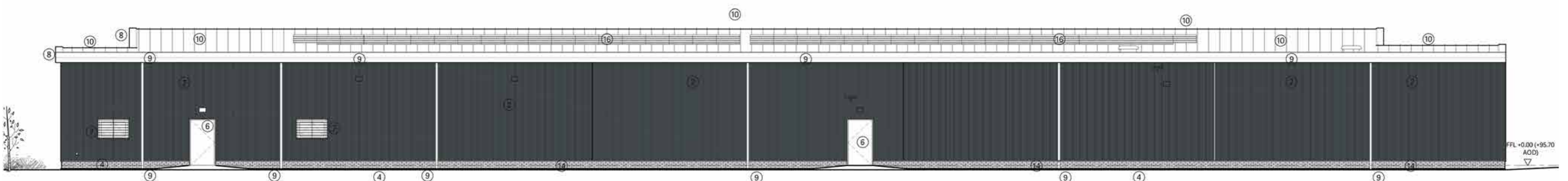
Front (North East) Elevation



Side (South West) Elevation



Rear (South East) Elevation



Side (North West) Elevation

Energy efficiency

Aldi is already meeting high standards of energy efficiency and is committed to responsible energy usage. Aldi Matlock will be built with solar panels, contributing to the future sustainability of its new store.

All new Aldi stores have doors on their fridges as standard, reducing each store's energy consumption by about 20%. This is equivalent to a carbon emissions saving of up to 20 tonnes per store each year.

All Aldi stores use environmentally friendly, energy-efficient refrigeration and LED lighting both internally and externally.

Aldi uses air source heat pumps that provide almost all the heating for its stores, re-using otherwise wasted machinery heat.

A contemporary design

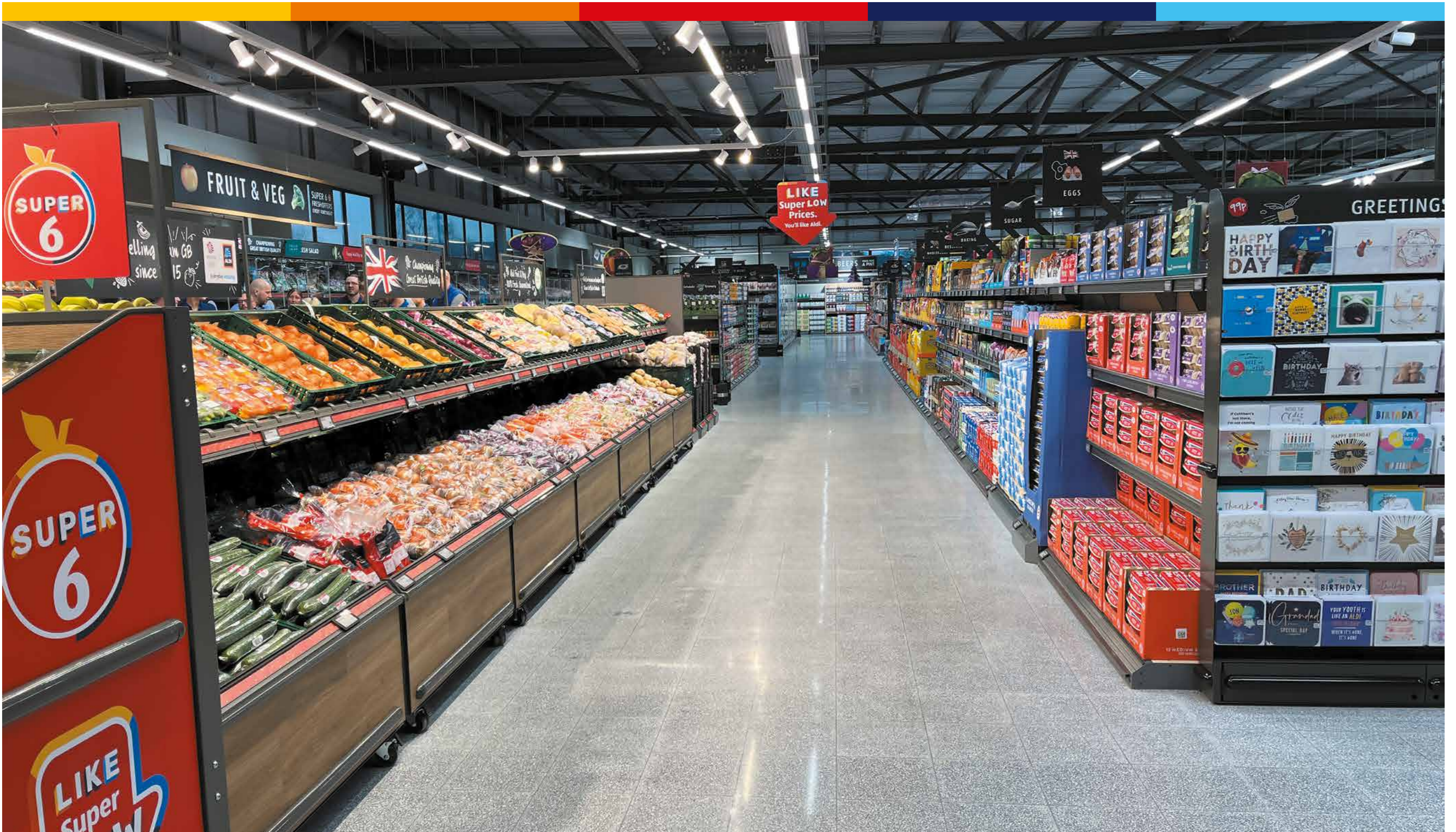
Aldi proposes a contemporary selection of primarily grey and silver cladding, complemented with aluminium detailing. These will offer an appropriate and sympathetic contrast to the stone rock face of the former quarry in which the site is located.

Aldi takes great pride in the quality and design of its stores, with trees and landscaping playing a key part in creating an attractive and welcoming environment.





About Aldi



Aldi is proud to be at the heart of local communities across the country. To continue their community-led culture, Aldi has set out a number of “neighbour-friendly” practices:

- Aldi aims to recruit its store colleagues from the local area, which enables them to react quickly and sympathetically to any local issues.
- Unlike most supermarkets, which operate extended or 24-hour opening periods, Aldi stores typically open between 8am and 10pm Monday to Saturday, and between 10am and 4pm on Sundays.
- Aldi only stocks around 2,500 exclusive products, compared with supermarkets such as Sainsbury's which stock over 20,000 lines. This means that customers at our stores often visit other nearby retailers to complete their shopping.
- Aldi's unique delivery system enables products to be transferred from the vehicle straight into the store, without the need for external movement – minimising the potential for any disruption.
- Aldi works with the community engagement platform Neighbourly to pair local charities, community groups, and food banks with its stores, to enable them to collect surplus food and perishable products up to seven days a week.

Local jobs

With up to 40 new full and part time roles available, Aldi is committed to providing jobs for local people.

Aldi's rates of pay are significantly higher than the Government's National Living Wage and also above the Living Wage Foundation's recommended national rates. From January 2023, Store Assistants will receive a minimum hourly rate of £11.40 nationally (£12.45 within the M25).

Aldi aims to recruit people from the local area. As a result of this approach, most of Aldi's colleagues live locally and understands the communities needs. More information on career opportunities can be found at www.aldirecruitment.co.uk.





Proposals for a new Aldi store for Dale Road, Matlock



Computer Generated Image of the proposed store



Wider context masterplan

