



Our New Store

Aldi is striving to become a carbon neutral company, working hard to ensure our sites are environmentally friendly, with a range of initiatives, such as LED lighting throughout our stores, enabling us and our supply chain to constantly reduce its carbon footprint.

Landscaping

Aldi takes great pride in the quality and design of its stores, with landscaping a key part of creating an appealing and welcoming environment.

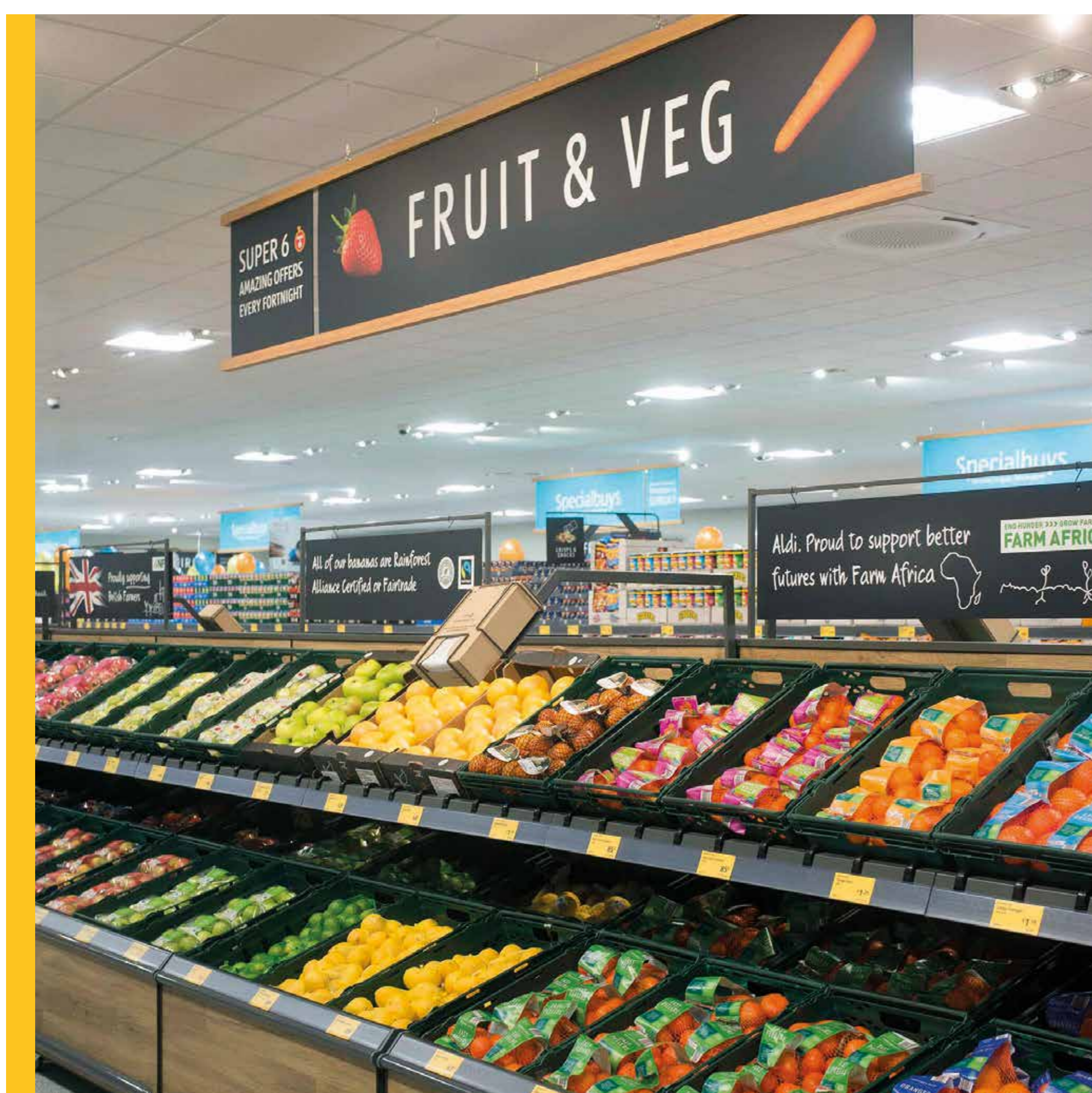
Landscaping across the site would aim to enhance its appearance with a mix of tree and shrub planting, providing an attractive setting for the new store.

Some trees on the site are subject to a Tree Preservation Order and will be retained as part of the new scheme.

High-quality not quantity

With a wide range of local amenities, we have found that added competition stimulates the local area and provides other local businesses with a higher footfall than previously recorded.

With a significantly reduced core range of products compared to other major superstores, Aldi is able to provide high-quality ranges such as 'Specially Selected', which was voted the Favourite Premium Supermarket Range last year, by Good Housekeeping readers. Customers use Aldi for part of, but not all of, their weekly grocery shop, helping support local small businesses that neighbour Aldi sites.



Improving choice in Mere Green

We are transforming this site and creating a high-quality development on brownfield land. Regeneration here, coupled with our proposed new store on Brassington Avenue, will act as a catalyst for regeneration across Sutton Coldfield.

We aim to provide choice and accessibility for shoppers in this community and are widening the choice for customers in Mere Green as well as Sutton Coldfield.



Our green credentials

We are constantly working to reduce the impact our business has on the environment and have developed a range of initiatives that ensure our existing and future stores foster and promote sustainability.

We are committed to using materials for the construction of our stores that perform well environmentally, either through composition or manufacture. We aim to minimise energy use in producing and transporting building materials, use recycled material from local sources as far as possible, and choose materials with low embodied carbon.

Apart from general waste, all waste such as packaging is returned to the distribution centre and sent on for recycling whilst pallets are reused in the delivery process.

Heating for our modern stores is provided generally through underfloor heating whereby the heat provided is recovered and re-used from our refrigeration systems to ensure energy wastage is minimised.

We source all our stores electricity from renewable sources only.

