

Landscape Management Plan



**Tyler
Grange**

Pontfaen Road, Lampeter

15th November 2021

TG Report No. 13550_R04b_LS_CW

Report No:	Date	Revision	Author	Checked
13550_R04b	15 th November 2021	B	Karishma Ladva Ba(Hons) MA	Anneliese Walker CMLI

Disclosure:

This report, all plans, illustrations, and other associated material remains the property of Tyler Grange Group Ltd until paid for in full. Copyright and intellectual property rights remain with Tyler Grange Group Ltd.

The contents of this report are valid at the time of writing. Tyler Grange shall not be liable for any use of this report other than for the purposes for which it was produced. Owing to the dynamic nature of ecological, landscape, and arboricultural resources, if more than twelve months have elapsed since the date of this report, further advice must be taken before you rely on the contents of this report. Notwithstanding any provision of the Tyler Grange Group Ltd Terms & Conditions, Tyler Grange Group Ltd shall not be liable for any losses (howsoever incurred) arising as a result of reliance by the client or any third party on this report more than 12 months after the date of this report.



Contents:

Section 1: Introduction	1
Section 2: Site Overview of Existing Landscape and its Condition	2
Section 3: Proposed Soft Landscaping	3
Section 4: Long Term Design Objectives	4
Section 5: Management Regimes and Responsibilities	6
Section 6: Soft Landscaping Maintenance Work Schedule	7

Plan:

13550/P13 Soft Landscaping Proposals (Sheet 1)

13550/P14 Soft Landscaping Proposals (Sheet 2)



Section 1: Introduction

Purpose

- 1.1 This Landscape Management Plan (LMP) has been prepared by Tyler Grange Group Limited on behalf Aldi Stores Limited and University of Wales Trinity Saint David for the erection of a Class A1 retail Aldi foodstore, the refurbishment of a Grade II listed sports pavilion, the installation of three pre-fabricated wooden exhibition pods, and a nature and biodiversity area with associated access, car parking and landscaping to be submitted to Ceredigion County Council. The application also includes Listed Building Consent involved with the refurbishment of the listed pavilion. The application area is located off of Pontfaen Road, Lampeter (hereafter referred to as the 'site').
- 1.2 The purpose of the Landscape Management Plan is to provide details of measures to ensure the successful establishment and ongoing maintenance of the soft landscape elements of the development proposals.
- 1.3 This Landscape Management Plan should be read in conjunction with the Soft Landscaping Proposals 13550/P13 and P14.

Scope of the Landscape Management Plan

- 1.4 This Landscape Management Plan is set out as follows:
 - Section 2 describes the site, and provides an overview of the existing landscape and its condition;
 - Section 3; describes the proposed soft landscaping;
 - Section 4 sets out the long-term design objectives;
 - Section 5 sets out the management regimes and responsibilities; and
 - Section 6 sets out the maintenance operations for all the soft landscape areas.



Section 2: Site Overview of Existing Landscape and its Condition

Site Context

- 2.1 The site currently comprises a cricket pavilion which built for St David's College now known as UWTSO, access route from the north-eastern corner extending along the eastern boundary and a car park to the east of the pavilion.
- 2.2 The site is predominantly enclosed by mature vegetation at its boundaries. A linear row of mature Horse Chestnut trees are scattered along the northern boundary, with a flailed hedgerow forming the site boundary itself. To the west, a native woodland is established on the banks of the stream extending to the south. Bordering the western boundary, a row of mature Lombardy and Black Poplar trees are established.
- 2.3 The southern boundary is formed by a mature hedgerow (H2) and scattered mature trees, including one veteran Ash tree directly to the south of the pavilion. The eastern boundary vegetation is limited to 4 trees which form a cohesive canopy.



Section 3: Proposed Soft Landscaping

- 3.1. Details of proposed soft landscaping are found at Appendix 1.
- 3.2. Soft landscaping within the site is designed to:
 - Create an attractive and appropriate setting for the ALDI store, providing year-round interest and colour; and
 - Introduce a strong soft landscape framework with planting throughout the site including trees, selected to maximise biodiversity and aesthetic value.
- 3.3. 26 new trees are proposed. The selection of native species and trees of upright form will minimise future requirements for pruning. The planting size, pattern and spacing of new trees will give a stronger visual effect and will result in well-formed specimens within the urban context, without detriment to pedestrian and vehicle safety.
- 3.4. A native hedge is proposed to the eastern boundary which will provide some softening to the built environment and habitat for wildlife. The species selection for the native hedgerow will include *Acer Campestre*, *Crataegus monogyna*, *Corylus avellana* and *Ilex aquifolium*.
- 3.5. A grass meadow mixture (*Emorsgate EP1*) is proposed for its ecological value in the rain garden areas and grass areas to the rear of the store.
- 3.6. The ground around the proposed planting will be bark mulched to conserve moisture and reduce weed growth.
- 3.7. Soil additives are to be incorporated into the topsoil to all newly planting areas to provide a suitable growing medium.
- 3.8. Proposed trees with root balls are to be planted with double stakes and ties to provide anchorage.



Section 4: Long Term Design Objectives

Proposed trees

- 4.1. The long-term design and management objective is to ensure the trees thrive and to promote the character of the tree, to develop to an even form. Branches should only be removed so as to retain the natural appearance of the individual plant species or to remove broken or badly damaged branches and dead wood. Tree surgery such as crown lifting should be carried out as required to prevent restriction to pedestrians or vehicles.

Proposed Native Hedgerow

- 4.2. Native hedgerows are to be incorporated into the eastern boundary as shown on the planting plan. Bare root stock is to be planted in a double staggered row to establish a natural hedgerow.
- 4.3. Native hedgerow planting will be managed to achieve a maximum height of 2.5m.
- 4.4. The ground around the hedgerow transplants will be bark mulched to conserve moisture and reduce weed growth.
- 4.5. Careful trimming and pruning will be required in the early years to ensure the development of a well-clothed hedge. Trimming should aim to form an 'A' profile.

All Hedging

- 4.6. Inspect monthly for the first year and maintain shrubs/hedging in a weed free condition through combined techniques by hand, herbicides, cultivation and mulching.
- 4.7. Prune or clip to promote bushy, healthy growth and required shape when necessary.
- 4.8. Trimming back of growth overhanging adjacent footpaths or windows when required.
- 4.9. Remove/replace individual specimens as required.

Grassland Meadow Mix Seeding

- 4.10. Most of the sown meadow species will consist of perennials which will be slow to germinate and grow and are therefore unlikely to flower during the first growing season. The resulting planting will consist of mainly annual weeds within the first growing season which will require topping or mowing.
- 4.11. When sowing within the autumn period, spring and summer cuts of the species are not to occur within the first growing season. Once the annual planting has flowered cuts are to occur within the mid-summer period and any excess vegetation is to be removed. It is important to cut back annuals before they die back, set seed and collapse. This cut will reveal the developing meadow mixture and give it the space required to develop.
- 4.12. In the second and subsequent years the wildflower seeding areas will require different cutting regimes which will be based on ecological requirements.



- 4.13. A summer 'hay cut' in combination with autumn and possibly spring mowing is required for these seed mixes. In order to allow sown species to flower the meadow area must not be cut from spring to the mid-summer period (July / August) until the species have flowered. After flowering has occurred a hay cut is to be completed using a scythe, petrol strimmer or tractor mower to approximately 50mm and the arisings left spread out over the ground for 1 to 7 days in order for seeds to be shed before the arisings are removed from the site.
- 4.14. Meadow areas will include two contrasting mowing regimes, the core areas being maintained as longer 'meadows' and the borders and edges (primarily where they adjoin paths, roads or properties) being maintained as short grass or 'close mown' to ensure that a neat and managed appearance is maintained throughout the development.
- 4.15. Areas with longer grass will be cut to 50mm three times a year in early spring, mid-summer and late autumn). Arisings to be removed.



Section 5: Management Regimes and Responsibilities

- 5.1. The landscaping works will receive post installation maintenance for a one-year defects liability period (DLP). All defects resulting from plant loss, disease, or failure to thrive will be replaced on a like for like basis. A visit every two months, more frequently should watering be required, is recommended during the DLP. Subsequently a minimum of two maintenance visits per annum is recommended.
- 5.2. Maintenance and management activities are set out below (which covers a minimum period of five years) to ensure the soft landscaping is managed effectively beyond the time limits of the implementation and establishment works. The responsibility for this management and maintenance to be agreed. TG recommendation is for the landscape contractor that undertakes the planting works to be engaged to carry out the one-year establishment maintenance.
- 5.3. Management and maintenance operations will be monitored and reviewed annually on an on-going basis and where required, modified if the operations and frequencies set out do not deliver the required results or meet the specific aims and objectives.
- 5.4. As a minimum, maintenance visits should be undertaken to inspect, monitor as well as to carry out routine operations, including weeding and litter picking, with other specific operations being undertaken as scheduled below.



Section 6: Soft Landscaping Maintenance Work Schedule

Component	Task	Time of Year	Frequency
<p><i>Visits every two months throughout the one-year defects and establishment period, more frequently if required due to prologued dry weather conditions and the need for watering. Subsequently management and maintenance operations will be monitored and reviewed annually on an on-going basis and where required modified if the operations and frequencies set out do not deliver the required results or meet the specific aims and objectives.</i></p>			
Trees:	Prune and repair wounds in accordance with good horticultural and arboricultural practice.	Oct to Feb	As required (annually)
	Check the ties regularly for rubbing and adjust if necessary. Constriction of the stem by ties happens very quickly, so fast-growing trees need frequent checking. After bad weather, check for abrasion and snapped stakes or ties. Re-firm tree by adjusting tree ties and ensuring soil is re-firmed around the base.	Feb and after strong winds, frost heave and other disturbances.	As required (annually)
	Hand weed mulched areas around trees.	June to Sept	every visit
	Apply suitable non-selective herbicide to control weeds.	April / Oct	(only if required)
	Replace any failed specimens.	Oct to March	As required during the one-year DLP (next available planting season)
	Remove debris / litter	Throughout	every visit
	Top up bark mulch around bases of trees to full depth of 75mm.	April	As required during the two-year DLP
	Newly planted trees will be watered throughout May – August months after any period of four weeks without significant rain to thoroughly wet the top 150mm of soil around the tree roots.	Throughout	As required after a period of four weeks without significant rainfall
	Trimming and selective thinning of the canopy. Trim back growth overhanging adjacent footpaths when required.	Oct to March	Annually if required
	In years 2 and onwards remove staking if tree has established well and the stakes are no longer required.	Any	As required
Native Hedgerow	Re-shaping	Hard-prune Oct to Feb	Annually if required
	Hand weed	Throughout	Monthly/every visit
	Apply suitable non-selective herbicide to control weeds.	April to Sept	As required



	Apply fertiliser: Slow release, applied as per manufacturer's recommendations.	Mar / April	Annually
	Remove debris / litter	Throughout	Monthly/every visit
	Replace any failed specimens.	Oct to March	As required (next available planting season)
	Top up bark mulch hedge base to full depth of 75mm.	April	Annually
	Watering of newly established hedgerows.	Throughout	As required after a period of four weeks without significant rainfall.
	Trim and top hedgerow as necessary avoiding bird nesting season.	February	As required (annually)
Grassland Meadow Mix	Repair eroded areas - rotovate to 150mm, seed with appropriate mixes as per planting schedule.	May to Sept	As required (annually)
	Remove debris / litter	Throughout	Monthly (every visit)
	Neat edges - cut fortnightly and remove arisings in areas of close mown grass.	March to October	Fortnightly
	Cut to 50mm	March to October	3 times per year
	Spot treatments of noxious weeds using selective herbicides.	Throughout	As required (Annually)

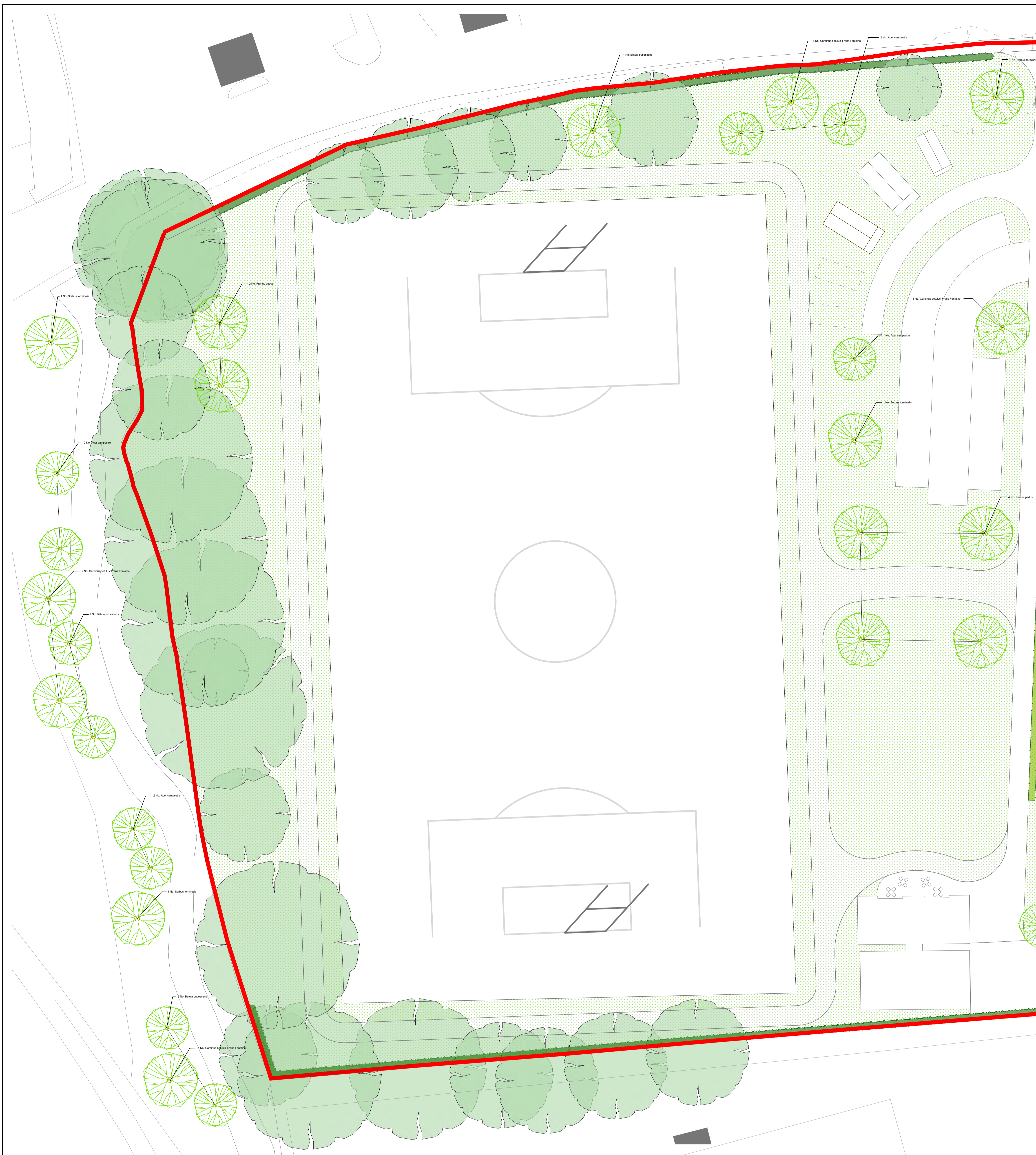


Plan:

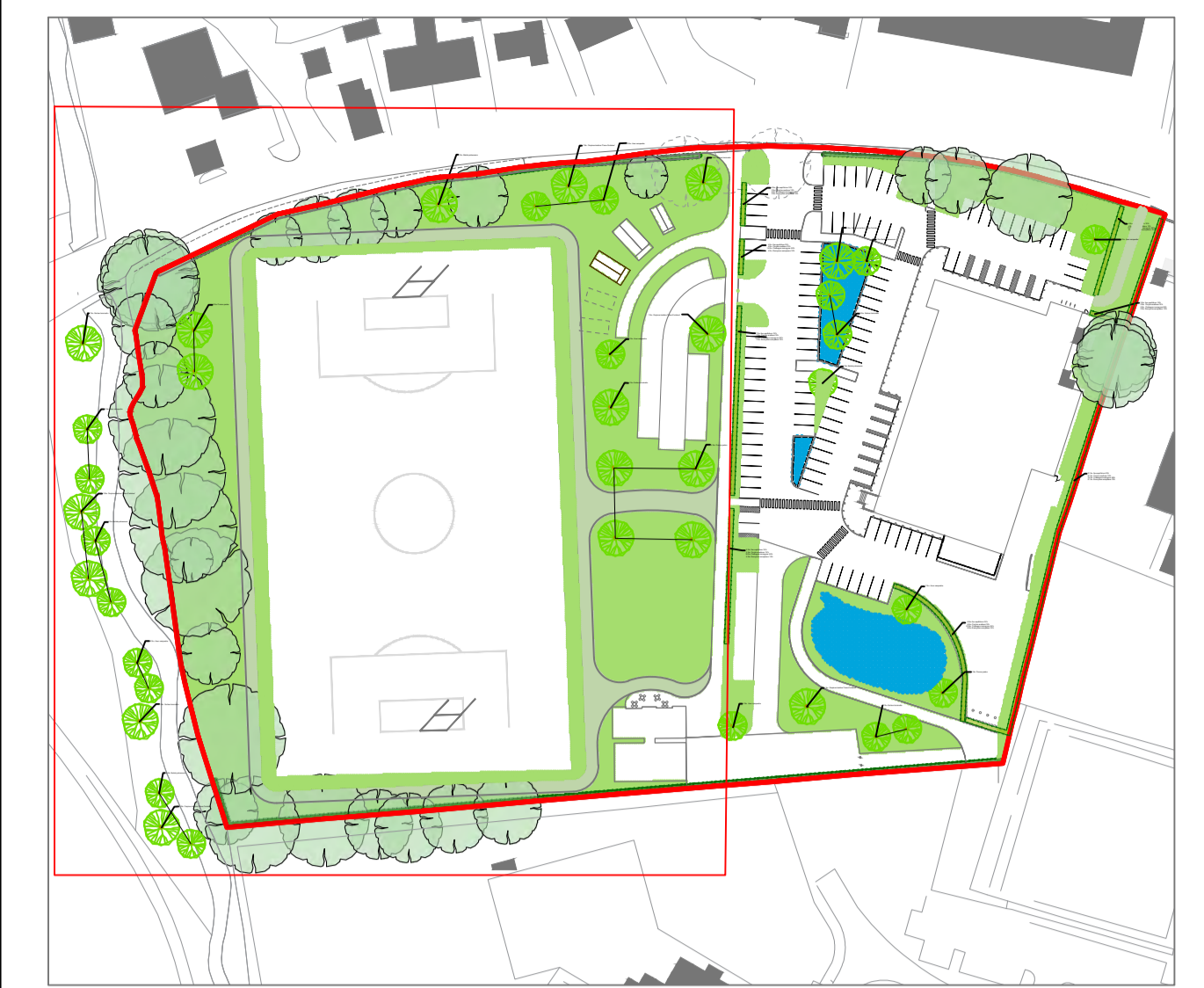
13550/P13 Soft Landscaping Proposals (Sheet 1)

13550/P14 Soft Landscaping Proposals (Sheet 2)

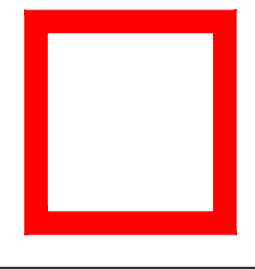
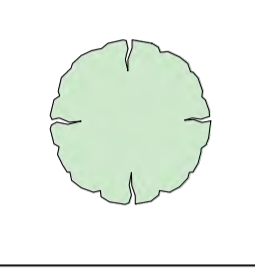
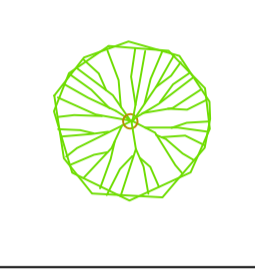
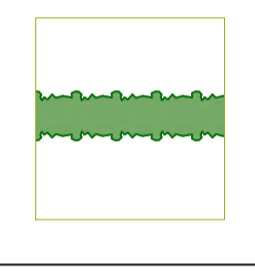
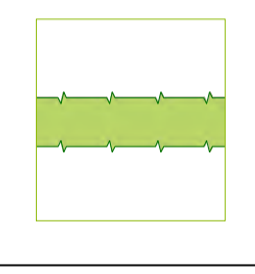
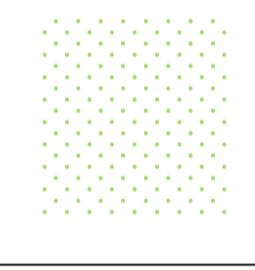
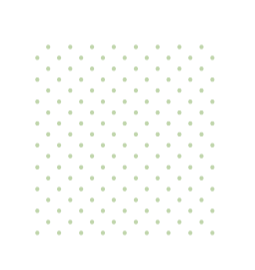




Location Plan:



Key:

-  Site Boundary
-  Existing Trees
-  Proposed Tree Planting
-  Existing hedgerow
-  Proposed Native Hedgerow
-  Proposed Amenity Grass (EM1)
-  Mown grass paths (EM1)

Planting schedule

Trees					
Number	Species	Height	Girth	Specification	Density
7	Acer campestre	400-450cm	16-18cm	RB; Extra Heavy Standard; clear stem minimum 200cm	Counted
5	Betula pubescens	400-450cm	16-18cm	RB; Extra Heavy Standard; clear stem minimum 200cm	Counted
5	Carpinus betulus 'Frans Fontaine'	450-500cm	16-18cm	RB; Extra Heavy Standard	Counted
6	Prunus padus	400-450cm	16-18cm	RB; Extra Heavy Standard; clear stem minimum 200cm	Counted
4	Sorbus torminalis	400-450cm	16-18cm	RB; Extra Heavy Standard; clear stem minimum 200cm	Counted

SPECIFICATION NOTES

GENERAL

- Proposals to be read in conjunction with Architects and Engineers Drawings;
- All landscape operations to be in accordance with all relevant and current British Standard Codes;
- All stock (other than container grown) shall be planted between November 30th and 28th February. Planting operations shall be carried out in suitable open weather and all plants re-firmed if lifted by frost during the contract. No planting shall take place in dry, hot and sunny weather or indeed of frost and snow are present, or in cold east winds, regardless of the stock specified
- Any plant material planted outside the recognised planting season (Nov-Feb), to be containerised stock and supplied at the sizes specified;

SOIL AND MULCH

- On site topsoil shall be as close as possible to BS3882:2015, but free from subsoil, clay and debris. Where a landscape subcontractor has concerns about the quality of on-site topsoil supplied by others, a representative sample should be sent to the Landscape Architect for comment;
- Topsoil shall be evenly and thoroughly cultivated to depths as follows incorporating any specified ameliorates to full depths of cultivation;
 - Extra Heavy Standard trees - Pits generally 1.2 x 1.2 metres square and 1 metres deep;
 - Shrubs & Hedge Planting - 400mm deep;
 - Seeded or Turfed Areas - 150mm deep;
- Backfill for trees with suitable topsoil mixed with 50 Litres of suitable non-peat based compost and slow release fertiliser as per manufacturers instruction. Fill to within 85mm of surface (soil level of grass adjacent);
- All planting areas to be covered with a 75mm depth of medium grade bark mulch.

PLANT MATERIAL TREATMENT

- All trees and shrubs are to be supplied from nurseries in the UK or other member countries of the EEC. The Landscape Architect is to approve the nursery selected by the Landscape Subcontractor for the supply of plants. The Landscape Subcontractor is responsible for the protection of plant material being hardened off or grown at their nursery and shall make good defects;
- Tree Stakes and Ties - Stakes to be pressure treated larch poles with ACQ by "PermaWood" or other similar and approved. The stakes shall be 700mm apart (each side of the root ball, taking care to avoid the root ball), with a half rounded cross brace positioned at the top of the posts (level and horizontal), nailed to the stakes with 2 No. galvanised nails at each end. Secure the stem to the tree using a rubber tie with spacing device or sackcloth (and several turns to form a good spacing knot) positioned 25mm maximum from the top of the post.

EXISTING TREES AND SHRUBS

- Existing trees to be retained shall be protected in accordance with the requirements and specifications set out in BS5857:2012 paragraph 6.2.2 figure 3 and BS1722 : Part 4

PROPOSED TREES

- Contractor to ascertain the location of all sewers and services prior to tree planting;
- No trees to be planted within 3 metres of sewers or services or other easement recommended by the relevant statutory undertaker without the use of tree root barriers. All tree pits with root barriers are subject to engineer's approval;
- Extra Heavy Standard Trees to be underground guyed and fixed in accordance with the tree pit detail.

- Where necessary increase tree pit dimensions to ensure that tree pits are at least 75mm deeper and 150mm wider than the rootball. Break up bottom of pits to a depth of 150mm. Compacted glazed sides of pits should be roughened;
- Cut back any broken or damaged roots to sound growth;
- Plant trees upright, in the centre of the pit and at original soil depth;

SHRUBS

- Plant shrubs exactly in accordance with the landscape drawings. All non-perishable containers shall be removed and any damaged roots carefully pruned. Excavate planting holes 75mm wider than the root spread. Each plant shall be planted at its correct depth, to the original soil or nursery mark, to BS4428:1989. Compost and sand additives shall be worked well into backfill whilst backfilling is in progress, taking care not to raise general levels of the soil so that bed edges are less than 65-80mm below the adjacent pavement edges;
- Where native whip and shrub planting are shown in mixes, the numbers of each species for the groups is specified on the planting list on the drawing (and will be inspected by the Landscape Architect).
- Gaps around the root ball shall be filled to half its depth and firmed by hand, but avoiding damage to the roots. Further soil can then be used to fill the voids to the surface and firmed by treading, taking care not to over firm and damage roots;
- Water in all plants within 2 hours of planting with 25 litres minimum per metre squared;
- Prune back leggy growth immediately after planting;
- Approved bark mulch to a depth of 75mm.

HEDGING

- Plant hedging in trenches 400mm depth and large enough to take the full spread of roots;
- Set out plants evenly as scheduled; planted in groups of 3-7 of the same species;
- Backfill with excavated topsoil/shrub planting mix;
- Prune back native hedging hard at the appropriate season in year one (and outside of the bird nesting season).

RABBIT GUARDS

- Where specified, install rabbit guards supported by canes around each transplant (to supplier specification);

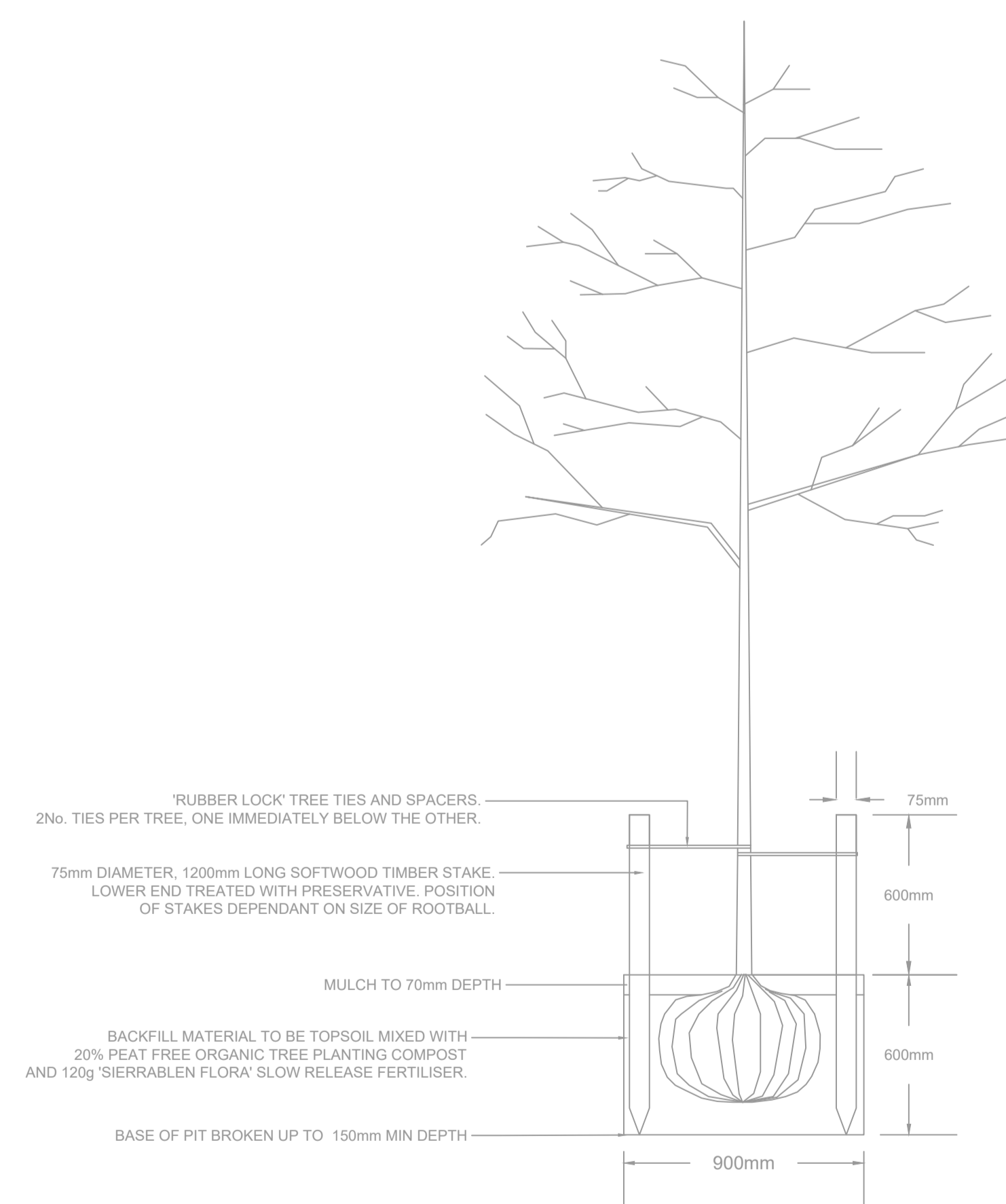
PREPARATION OF WILDFLOWER GRASS AREAS

- Grade areas to be seeded until the surface is evened and the level is or the required height, and is further flush with any paved area (max tolerance 0 to -10mm), to receive run off, but not so low as to damage mower blades on cutting the edges. Fully cultivate existing and imported topsoil to a depth of 150mm and rake surface to form a fine tilth. Remove all stones, twigs, logs and other debris. Stone rake repeatedly until all stones greater than 20mm in any one direction are removed. After 6 weeks (minimum time), but not later than 12 weeks, spray all weed with a suitable translocated systemic and approved herbicide;

SEEDING OF WILDFLOWER GRASS AREAS

- No seed is to be sown until the cultivation and preparatory works have been approved by the Landscape Architect;
- Sowing rates for seed mixes as recommended in the Key;
- Carefully rake in thoroughly to ensure the seed is a few millimetres below surface.
- Roll using a very light roller, (or cylindrical mower) Ensure surface is even and level;

EXTRA HEAVY STANDARD TREES IN SOFT LANDSCAPE AREAS



ESTABLISHMENT OF WILDFLOWER GRASS AREAS

- Strim once in late October to a height of 125mm and once in mid-March to a height of 150mm. Strim again at the end of August or early September to a height of 75mm.

WATERING

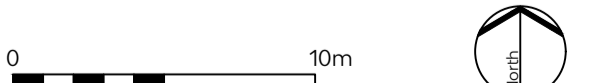
- Maintenance watering shall be carried out by a contracted maintenance company.

WEEDING

- Remove all weed growth by hand as necessary to ensure weed free and tidy planting beds. Take great care not to disturb sheet or bark mulch. All weeds shall be removed from the site. Two visits are required per growing season where sheet mulch is specified, and 6 visits per growing season are required where no sheet mulch is specified. Visits should occur approximately monthly, subject to weather conditions.

SHRUBS, TREES & TIDYING BEDS

- Remove all litter and debris at each visit, leaving the site clean and tidy. Firm in and straighten out plants loosened and prune out dead, leggy and broken branches, without damage to natural habit of the plant. In the case of trees, a suitably skilled and qualified arboriculturalist shall carry out such pruning. Tree stakes and ties shall be checked, adjusted and replaced as necessary. Prune hedges back to an even hedge line to encourage thickening, twice within the first growing season after planting.



Marsden Estate, Randscomb, Cirencester, GL7 7EX
 E: TGLandscape@tylergrange.co.uk
 W: www.tylergrange.co.uk
 T: 01285 851 804

This document should not be relied on or used in circumstances other than those for which it was prepared and for which Tyler Grange was appointed.

Tyler Grange accepts no responsibility for this document to any other party other than the person by whom it was appointed.

Tyler Grange Group Ltd
 Copyright © Tyler Grange Group Ltd 2021

Project title
 Pontfaen Road, Lampeter

Drawing title
 Soft Landscaping Proposals

Date
 05.11.2021

Scale
 1:250 @ A0

Drawing number
 13550/P13

Drawn
 RB

Checked
 Approved

Revision
 -

Rev Description

XXXXXX
 Date

SPECIFICATION NOTES

GENERAL

- Proposals to be read in conjunction with Architects and Engineers Drawings;
- All landscape operations to be in accordance with all relevant and current British Standard Codes;
- All stock (other than container grown) shall be planted between November 30th and 28th February. Planting operations shall be carried out in suitable open weather and all plants re-firmed if lifted by frost during the contract. No planting shall take place in dry, hot and sunny weather or indeed of frost and snow are present, or in cold east winds, regardless of the stock specified
- Any plant material planted outside the recognised planting season (Nov-Feb), to be containerised stock and supplied at the sizes specified;

SOIL AND MULCH

- On site topsoil shall be as close as possible to BS3882:2015, but free from subsoil, clay and debris. Where a landscape subcontractor has concerns about the quality of on-site topsoil supplied by others, a representative sample should be sent to the Landscape Architect for comment;
- Topsoil shall be evenly and thoroughly cultivated to depths as follows incorporating any specified ameliorates to full depths of cultivation;
 - Extra Heavy Standard trees - Pits generally 1.2 x 1.2 metres square and 1 metres deep;
 - Shrubs & Hedge Planting - 400mm deep;
 - Seeded or Turfed Areas - 150mm deep;
- Backfill for trees with suitable topsoil mixed with 50 Litres of suitable non-peat based compost and slow release fertiliser as per manufacturers instruction. Fill to within 85mm of surface (soil level of grass adjacent);
- All planting areas to be covered with a 75mm depth of medium grade bark mulch.

PLANT MATERIAL TREATMENT

- All trees and shrubs are to be supplied from nurseries in the UK or other member countries of the EEC. The Landscape Architect is to approve the nursery selected by the Landscape Subcontractor for the supply of plants. The Landscape Subcontractor is responsible for the protection of plant material being hardened off or grown at their nursery and shall make good defects;
- Tree Stakes and Ties - Stakes to be pressure treated larch poles with ACQ by "PermaWood" or other similar and approved. The stakes shall be 700mm apart (each side of the root ball, taking care to avoid the root ball), with a half rounded cross brace positioned at the top of the posts (level and horizontal), nailed to the stakes with 2 No. galvanised nails at each end. Secure the stem to the tree using a rubber tie with spacing device or sackcloth (and several turns to form a good spacing knot) positioned 25mm maximum from the top of the post.

EXISTING TREES AND SHRUBS

- Existing trees to be retained shall be protected in accordance with the requirements and specifications set out in BS5837:2012 paragraph 6.2.2 figure 3 and BS1722 : Part 4

PROPOSED TREES

- Contractor to ascertain the location of all sewers and services prior to tree planting;
- No trees to be planted within 3 metres of sewers or services or other easement recommended by the relevant statutory undertaker without the use of tree root barriers. All tree pits with root barriers are subject to engineer's approval;
- Extra Heavy Standard Trees to be underground guyed and fixed in accordance with the tree pit detail.
- Where necessary increase tree pit dimensions to ensure that tree pits are at least 75mm deeper and 150mm wider than the rootball. Break up bottom of pits to a depth of 150mm. Compacted glazed sides of pits should be roughened;
- Cut back any broken or damaged roots to sound growth;
- Plant trees upright, in the centre of the pit and at original soil depth;

SHRUBS

- Plant shrubs exactly in accordance with the landscape drawings. All non-perishable containers shall be removed and any damaged roots carefully pruned. Excavate planting holes 75mm wider than the root spread. Each plant shall be planted at it's correct depth, to the original soil or nursery mark, to BS4428:1989. Compost and sand additives shall be worked well into backfill whilst backfilling is in progress, taking care not to raise general levels of the soil so that bed edges are less than 65-80mm below the adjacent pavement edges;
- Where native whip and shrub planting are shown in mixes, the numbers of each species for the groups is specified on the planting list on the drawing (and will be inspected by the Landscape Architect).
- Gaps around the root ball shall be filled to half its depth and firmed by hand, but avoiding damage to the roots. Further soil can then be used to fill the voids to the surface and firmed by treading, taking care not to over firm and damage roots;
- Water in all plants within 2 hours of planting with 25 litres minimum per metre squared;
- Prune back leggy growth immediately after planting;
- Approved bark mulch to a depth of 75mm.

HEDGING

- Plant hedging in trenches 400mm depth and large enough to take the full spread of roots;
- Set out plants evenly as scheduled; planted in groups of 3-7 of the same species;
- Backfill with excavated topsoil/shrub planting mix;
- Prune back native hedging hard at the appropriate season in year one (and outside of the bird nesting season).

RABBIT GUARDS

- Where specified, install rabbit guards supported by canes around each transplant (to supplier specification);

PREPARATION OF WILDFLOWER GRASS AREAS

- Grade areas to be seeded until the surface is evened and the level is or the required height, and is further flush with any paved area (max tolerance 0 to -10mm), to receive run off, but not so low as to damage mower blades on cutting the edges. Fully cultivate existing and imported topsoil to a depth of 150mm and rake surface to form a fine tilth. Remove all stones, twigs, logs and other debris. Stone rake repeatedly until all stones greater than 20mm in any one direction are removed. After 6 weeks (minimum time), but not later than 12 weeks, spray all weed with a suitable translocated systemic and approved herbicide;

SEEDING OF WILDFLOWER GRASS AREAS

- No seed is to be sown until the cultivation and preparatory works have been approved by the Landscape Architect;
- Sowing rates for seed mixes as recommended in the Key;
- Carefully rake in thoroughly to ensure that the seed is a few millimetres below surface.
- Roll using a very light roller, (or cylindrical mower) Ensure surface is even and level;

ESTABLISHMENT OF WILDFLOWER GRASS AREAS

- Strim once in late October to a height of 125mm and once in mid-March to a height of 150mm. Strim again at the end of August or early September to a height of 75mm.

WATERING

- Maintenance watering shall be carried out by a contracted maintenance company.

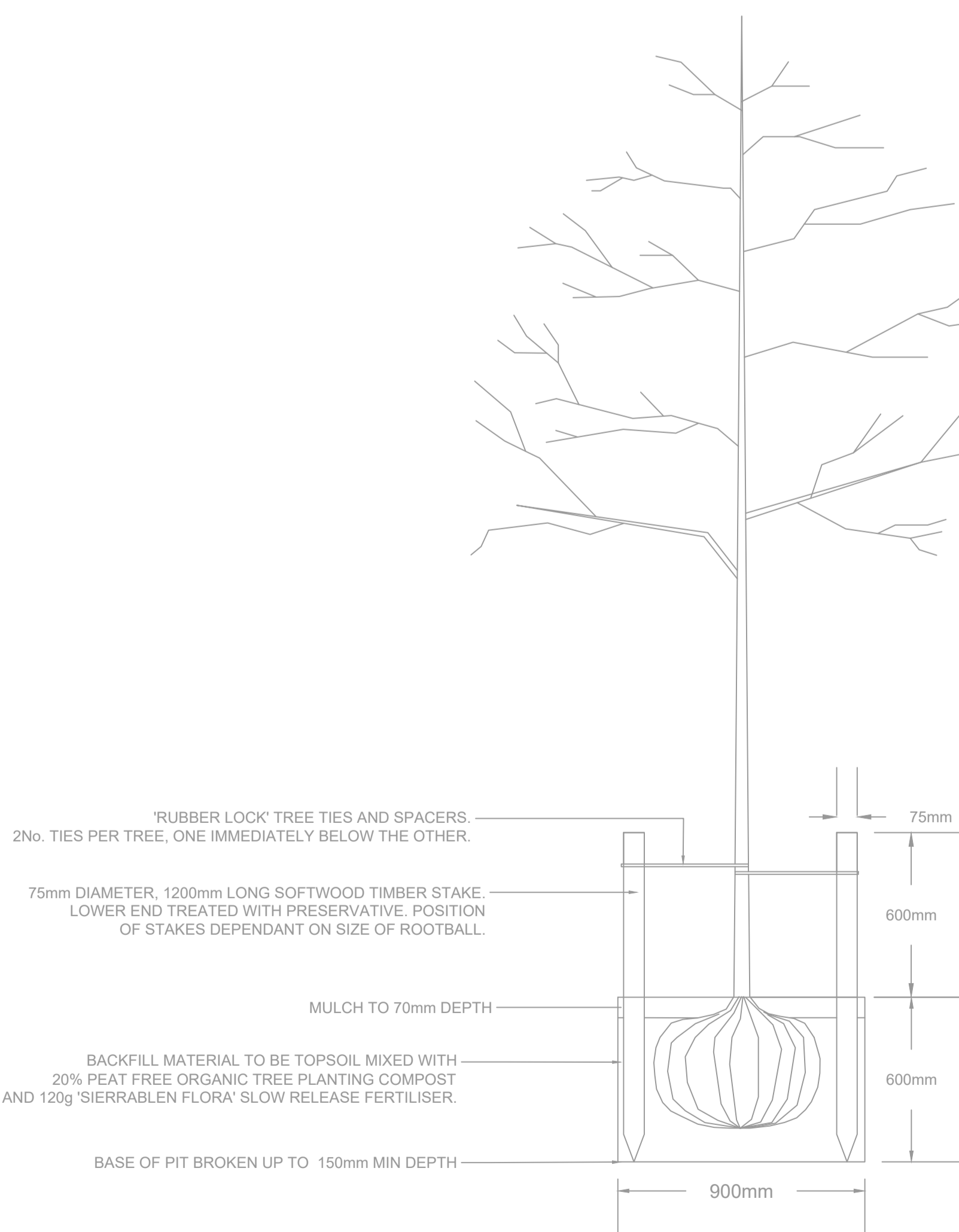
WEEDING

- Remove all weed growth by hand as necessary to ensure weed free and tidy planting beds. Take great care not to disturb sheet or bark mulch. All weeds shall be removed from the site. Two visits are required per growing season where sheet mulch is specified, and 6 visits per growing season are required where no sheet mulch is specified. Visits should occur approximately monthly, subject to weather conditions.

SHRUBS, TREES & TIDYING BEDS

- Remove all litter and debris at each visit, leaving the site clean and tidy. Firm in and straighten out plants loosened and prune out dead, leggy and broken branches, without damage to natural habit of the plant. In the case of trees, a suitably skilled and qualified arboriculturalist shall carry out such pruning. Tree stakes and ties shall be checked, adjusted and replaced as necessary. Prune hedges back to an even hedge line to encourage thickening, twice within the first growing season after planting.

EXTRA HEAVY STANDARD TREES IN SOFT LANDSCAPE AREAS



Planting schedule

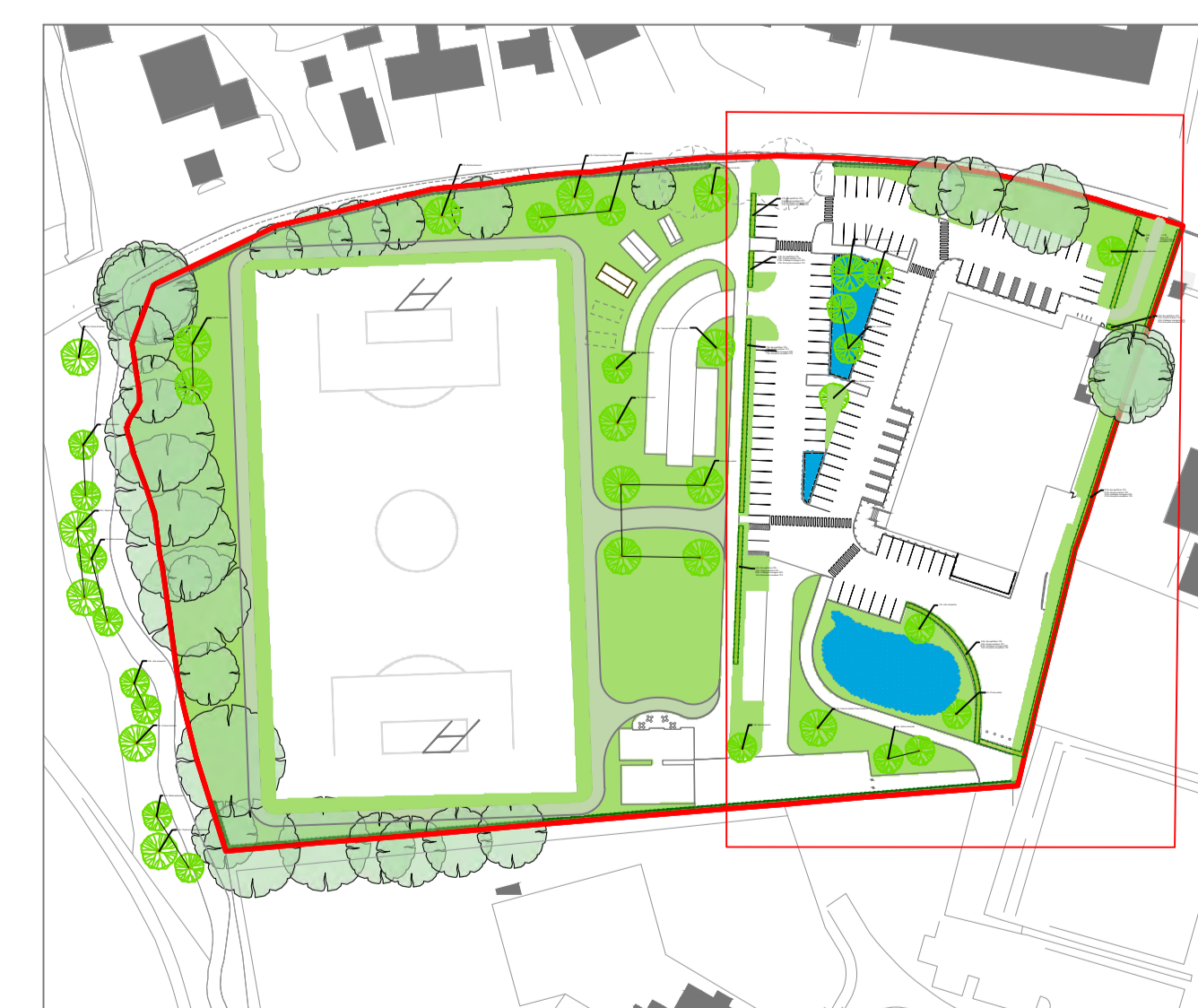
Trees						
Number	Species	Height	Girth	Specification		Density
3	Acer campestre	400-450cm	16-18cm RB	Extra Heavy Standard; clear stem minimum 200cm		Counted
2	Betula pubescens	400-450cm	16-18cm RB	Extra Heavy Standard; clear stem minimum 200cm		Counted
2	Carpinus betulus 'Frans Fontaine'	450-500cm	16-18cm RB	Extra Heavy Standard		Counted
1	Prunus padus	400-450cm	16-18cm			Counted
4	Sorbus torminalis	400-450cm	16-18cm RB	Extra Heavy Standard; clear stem minimum 200cm		Counted

Native Hedgerow			
Number	Species	Specification	Percentage Contribution
51	Corylus avellana	1+1: BR: Transplant: Rabbit spiral and cane	15%
176	Crataegus monogyna	1+1: BR: Transplant: Rabbit spiral and cane	55%
51	Euonymus europaeus	1+1: BR: Transplant: Rabbit spiral and cane	15%
51	Ilex aquifolium	1+1: BR: Transplant: Rabbit spiral and cane	15%
Total :329			

Key:

	Site Boundary		Existing hedgerow		Proposed Pond Edge Meadow Mix (EP1)
	Existing Trees		Proposed Native Hedgerow		Mown grass paths (EM1)
	Proposed Tree Planting		Proposed Amenity Grass (EM1)		

Location Plan:



Marsden Estate, Ranscomb, Cirencester, GL7 7EX
 E: Tglandscape@tylergrange.co.uk
 W: www.tylergrange.co.uk
 T: 01285 851 804

This document should not be relied on or used in circumstances other than those for which it was prepared and for which Tyler Grange was appointed.

Tyler Grange accepts no responsibility for this document to any other party other than the person by whom it was appointed.

Tyler Grange Group Ltd
 Copyright © Tyler Grange Group Ltd 2021

Project title
 Pontfaen Road, Lampeter

Drawing title
 Soft Landscaping Proposals

Date
 05.11.2021

Scale
 1:250 @ A0

Drawing number
 13550/P13

Drawn
 RB

Checked
 Approved

Revision

Rev Description

XXXX.20XX
 Date



Step into our world

www.tylergrange.co.uk



**Tyler
Grange**

Landscape | Ecology | **Arboriculture**