



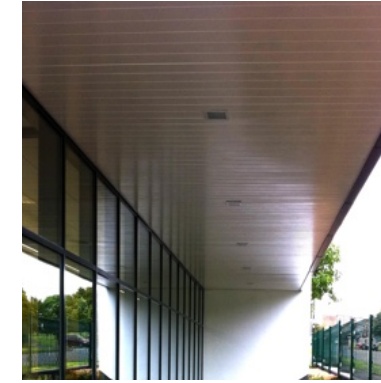
1 Shopfronts / window frames - polyester powder coated aluminium, colour - dark grey ral 7016 (anthracite)



2 Canopy cladding - polyester powder coated aluminium, colour - dark grey ral 7016 (anthracite)



3 External escape doors and frames, steel polyester powder coated finish, colour - dark grey ral 7016 (anthracite)



4 External Canopy soffit planks, ash and lacy 150mm wide ash plank white soffit planks, colour white.



5 Roof - Kingspan 'Topdeck' KS1000/71/TD/ECOSAFE with composite membrane.



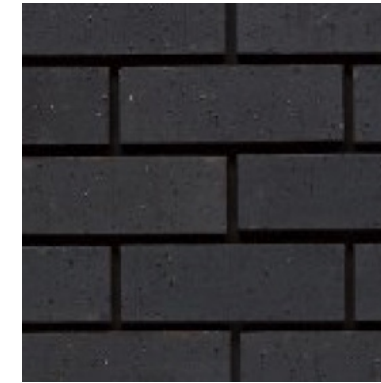
6 Wall - Natural stone blockwork.



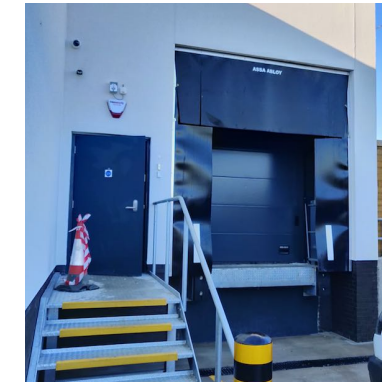
7 Wall - Timber rainscreen cladding.



8 Wall - WBS EpsiCoat Mineral Render Plus textured finish applied to blockwork in white.



9 Blockleys brick Ltd. 'smooth black' with tarmac y14 (black) coloured mortar brickwork to plinth



10 Sectional overhead loading bay door - pvf coated steel, ral 7016 (anthracite).



11 Eaves, soffits, fascia and exposed steelwork. colour - dark grey ral 7016 (anthracite)



Chartered Architects
Chartered Building Surveyors
Interior Designers
CDM Services

Glentworth Court, Lime Kiln Close
Stoke Gifford, Bristol BS34 8SR

+44 (0)117 931 2062
www.kendallkingscott.co.uk

Project
Aldi Lampeter, Pontfaen Road

Client
Aldi Stores Ltd

Scale Paper Size Filename
NTS A3 190866 Materials.vwx

© Copyright Do not scale this drawing

P2	05/11/2021	DM JS	Render image updated
P1	19/10/21	JKCJS	Drawing Issue
Rev	Date	By Ap	Note

Drawing Title
Building Facade Materials

Project Number	Drawing Number	Revision
190866-1901	1901	P2

Date	Drawn	Checked	Status
19/10/21	JKC	JS	PLANNING

Check all dimensions and levels on site

FOR LOCATION OF MATERIALS SHOWN ABOVE PLEASE REFER TO SCHEME ELEVATIONS 1400 AND ROOF PLAN 1360

Only to be used on the site for which designed. The electronic transmission of designs/information contained in this drawing is carried out entirely at the User's risk and Kendall Kingscott Ltd. will have no liability for any errors or inaccuracies arising therefrom. The production of amended or updated information from the said designs/information by the User is entirely the responsibility of the User and Kendall Kingscott Ltd. shall have no responsibility in respect thereof whatsoever.