

Planting Schedule

Number	Species	Height	Girth	Specification	Density
2	Acer platanoides	425-600cm	14-16cm	RB; 3x; Extra Heavy Standard; clear stem 175-200cm; 4 breaks	Counted
4	Acer platanoides 'Crimson Sentry'	425-600cm	14-16cm	RB; 3x; Extra Heavy Standard; clear stem 175-200cm; 4 breaks	Counted
5	Alnus glutinosa	400-450cm	14-16cm	RB; 3x; Extra Heavy Standard; clear stem minimum 200cm; 5 breaks	Counted
2	Amelanchier lamarckii	300-350cm	14-16cm	RB; 3x; Extra Heavy Standard; clear stem 175-200cm; 5 breaks	Counted
4	Betula pendula	400-450cm	14-16cm	RB; 3x; Extra Heavy Standard; clear stem 175-200cm; 5 breaks	Counted
4	Ginkgo biloba	425-600cm	14-16cm	RB; 4x; Extra Heavy Standard; clear stem 175-200cm; 4 breaks	Counted
3	Tilia cordata 'Greenspire'	425-600cm	14-16cm	RB; 3x; Extra Heavy Standard; clear stem 175-200cm; 4 breaks	Counted
Total :24					

Number of Plants	Species	Height	Pot Size	Specification	Density
380	Skimmia japonica	30-40cm	3L	Bushy; 3 brks: C	4/m ²
196	Ceanothus 'Burkwoodii'	30-40cm	2L	Branched; 3 brks: C	2/m ²
196	Cistus 'Silver Pink'	40-60cm	3L	Full pot: C	5/m ²
72	Pittosporum tenuifolium 'Golf Ball'	40-60cm	5L	Full pot: C	5/m ²
127	Viburnum tinus	30-40cm	2L	Bushy; 4 brks: C	2/m ²
53	Cornus alba 'Elegantissima'	40-60cm	3L	Bushy; 4 brks: C	5/m ²
132	Cornus sanguinea 'Midwinter Fire'	40-60cm	3L	Branched; 3 brks: C	3/m ²
30	Cornus alba 'Sibirica'	40-60cm	2L	Branched; 3 brks: C	2/m ²
120	Cornus stolonifera 'Flaviramea'	60-80cm	3L	Branched; 4 brks: C	2/m ²
210	Escallonia 'Apple Blossom'	40-60cm	2L	Branched; 3 brks: C	3/m ²
196	Elaeagnus ebbingei	40-60cm	2L	Branched; 3 brks: C	3/m ²
83	Euonymus fortunei 'Emerald 'n' Gold'	20-25cm	3L	Bushy; 7 brks: C	3/m ²
80	Lonicera nitida 'Baggesen's Gold'	30-40cm	5L	Bushy; 5 brks: C	2/m ²
286	Cotoneaster dammeri	20-30cm	2L	Bushy; 3 brks: C	4/m ²
453	Cotoneaster franchetii	20-30cm	3L	Bushy; 3 brks: C	3/m ²
44	Prunus laurocerasus 'Otto Luyken'	40-60cm	2L	Branched; 3 brks: C	3/m ²
90	Euonymus japonicus 'Jean Hugues'	60-80cm	3L	Full pot: C	9/m ²
27	Rosmarinus officinalis 'Miss Jessopp's Upright'	40-60cm	3L	Bushy: C	5/m ²
149	Cotoneaster suecicus 'Coral Beauty'	20-30cm	3L	Bushy; 3 brks: C	5/m ²
87	Vinca minor 'Atropurpurea'	20-30cm	3L	Full pot: 5 brks: C	7/m ²
Total :3011					

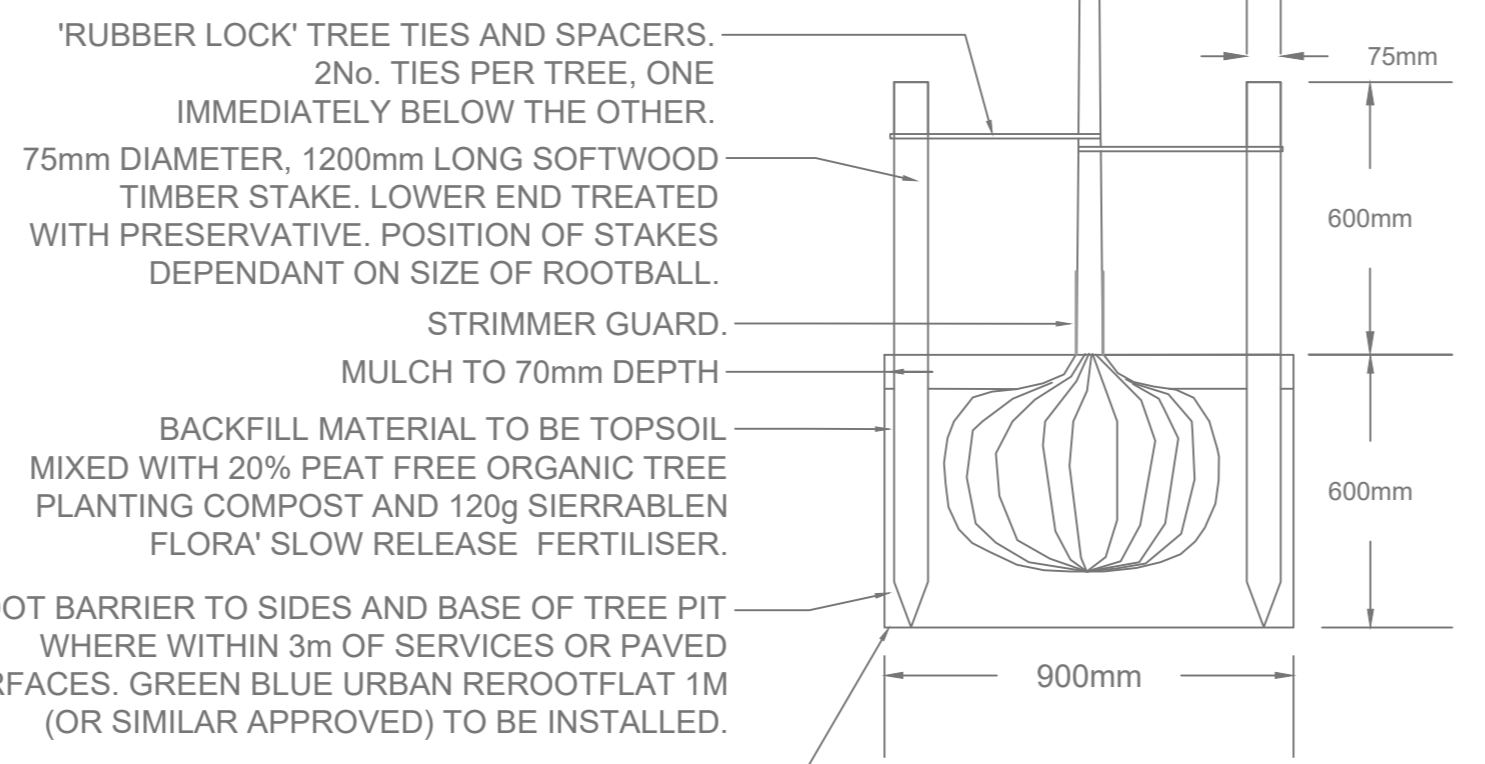
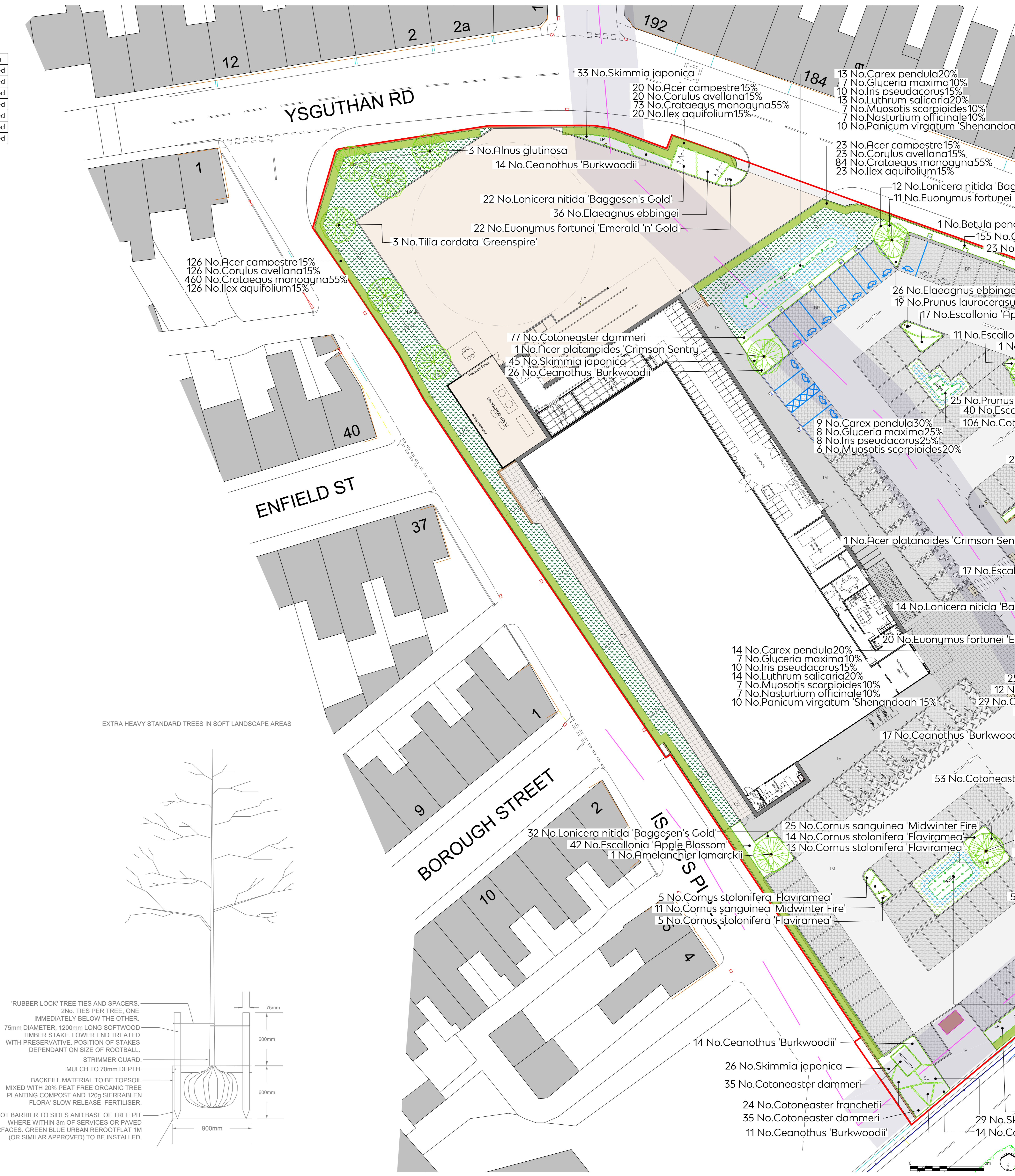
Number	Species	Height	Specification	Density	Percentage Contribution
264	Acer campestre	60-80cm	1+1: BR: Transplant: Rabbit spiral and cane	5/m	15%
264	Corulus avellana	60-80cm	1+1: BR: Transplant: Rabbit spiral and cane	5/m	15%
961	Crataegus monogyna	60-80cm	1+1: BR: Transplant: Rabbit spiral and cane	5/m	55%
264	Ilex aquifolium	60-80cm	1+1: BR: Transplant: Rabbit spiral and cane	5/m	15%
Total :1753					

Number	Species	Pot Size	Specification	Density	Percentage Contribution
69	Carex pendula	2L	C	4/m ²	20%
36	Glyceria maxima	2L	C	4/m ²	10%
52	Iris pseudacorus	2L	C	4/m ²	15%
69	Lythrum salicaria	2L	C	4/m ²	20%
36	Myosotis scorpioides	2L	C	4/m ²	10%
36	Nasturtium officinale	2L	C	4/m ²	10%
52	Panicum virgatum 'Shenandoah'	0.5L	C	4/m ²	15%
Total :350					

Number	Species	Pot Size	Specification	Density	Percentage Contribution
15	Carex pendula	2L	C	4/m ²	30%
13	Glyceria maxima	2L	C	4/m ²	25%
13	Iris pseudacorus	2L	C	4/m ²	25%
10	Myosotis scorpioides	2L	C	4/m ²	20%
Total :51					

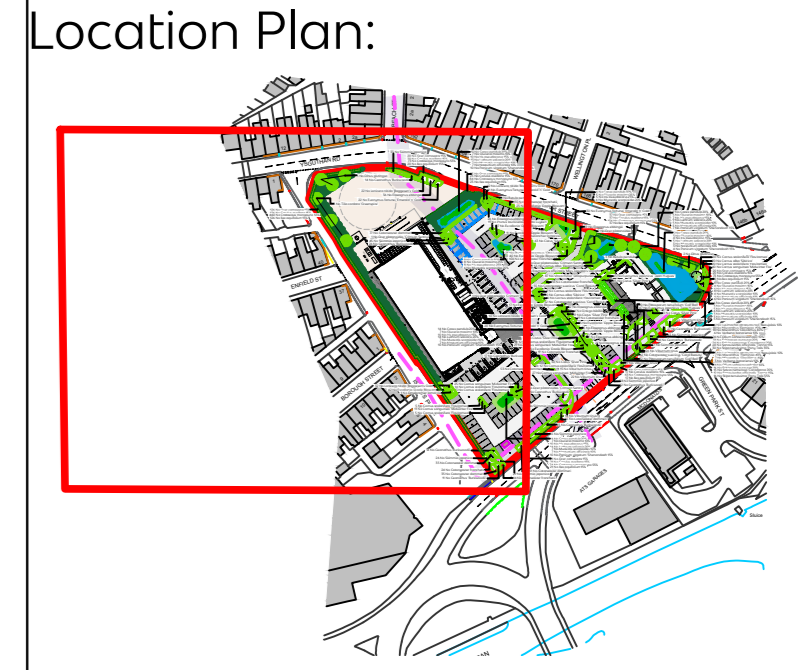
Number	Species	Height	Pot Size	Specification	Density	Percentage Contribution
9	Lysimachia atropurpurea 'Beaujolais'	40-60cm	2L	Full pot	7/m ²	10%
25	Miscanthus 'Flamingo'	80-100cm	5L	Full pot; Bushy	5/m ²	40%
25	Miscanthus 'Glaucifolius'	100-120cm	5L	Full pot; Bushy	5/m ²	40%
9	Verbena bonariensis	60-80cm	2L	Full pot	7/m ²	10%
Total :68						

Number	Species	Height	Pot Size	Specification	Density	Percentage Contribution
40	Allium sphaerocephalon	5cm+	Bulb		15/m ²	10%
47	Echinacea purpurea	60-80cm	2L	Full pot	9/m ²	20%
37	Salvia nemerosa 'Caradonna'	40-60cm	2L	Full pot	7/m ²	20%
36	Sanguisorba officinalis 'Tanna'	30-40cm	2L	Full pot	9/m ²	15%
46	Stipa tenuissima 'Pony Tails'	40-50cm	5-7.5L	Full pot; Bushy	5/m ²	35%
Total :206						



This document should not be relied on or used in circumstances other than those for which it was prepared and for which Tyler Grange was appointed.
Tyler Grange accepts no responsibility for this document to any other party other than the person by whom it was appointed.
Tyler Grange Group Ltd
Copyright © Tyler Grange Group Ltd 2023

- Key:
- Site Boundary
 - Existing Tree
 - Proposed Trees
 - Proposed Native Hedgerow
 - Proposed Shrub Planting
 - Proposed Ornamental Grasses and Perennials
 - Proposed Marginal Planting Mix
 - Proposed Strong Lawn Grass Mix (EG22)
 - Proposed Pond Edge Meadow Mix (EPI)
 - Basic General Purpose Meadow Mixture (EM1)
 - Existing Sewer and Easement



Revisions following lighting layout 06/06/2023
Date

Tyler Grange
Marsden Estate, Rendcomb
Cirencester, GL7 7EX
E: TGLandscape@tylergrange.co.uk
W: www.tylergrange.co.uk
T: 01285 831 804

Project title
Burrows Yard, Afan Way, Port Talbot

Drawing title
Soft Landscape Proposals
Sheet 1 of 2

Date 31.05.2023
Scale 1:200 @ A10
Status Planning

Drawn KC
Checked RW
Approved RW

Drawing number 15539/P02
Revision A