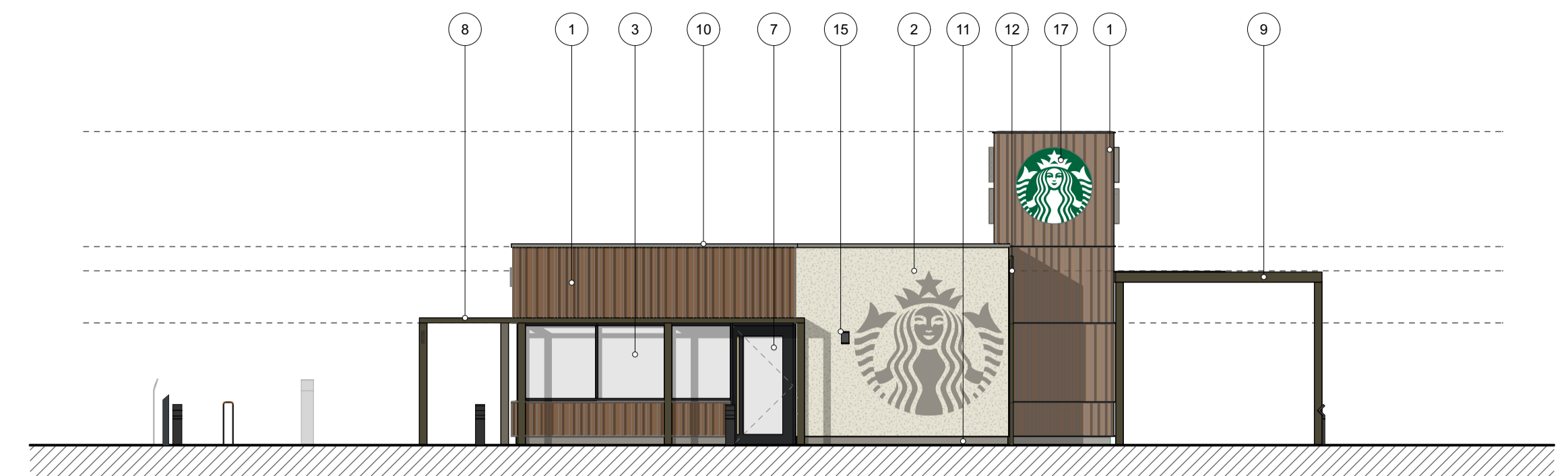
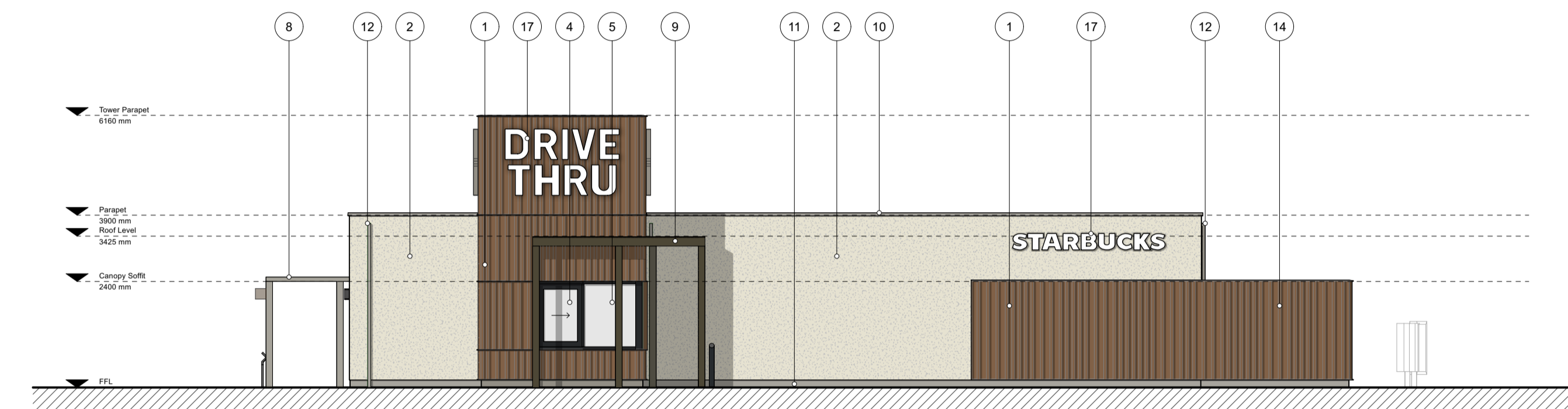


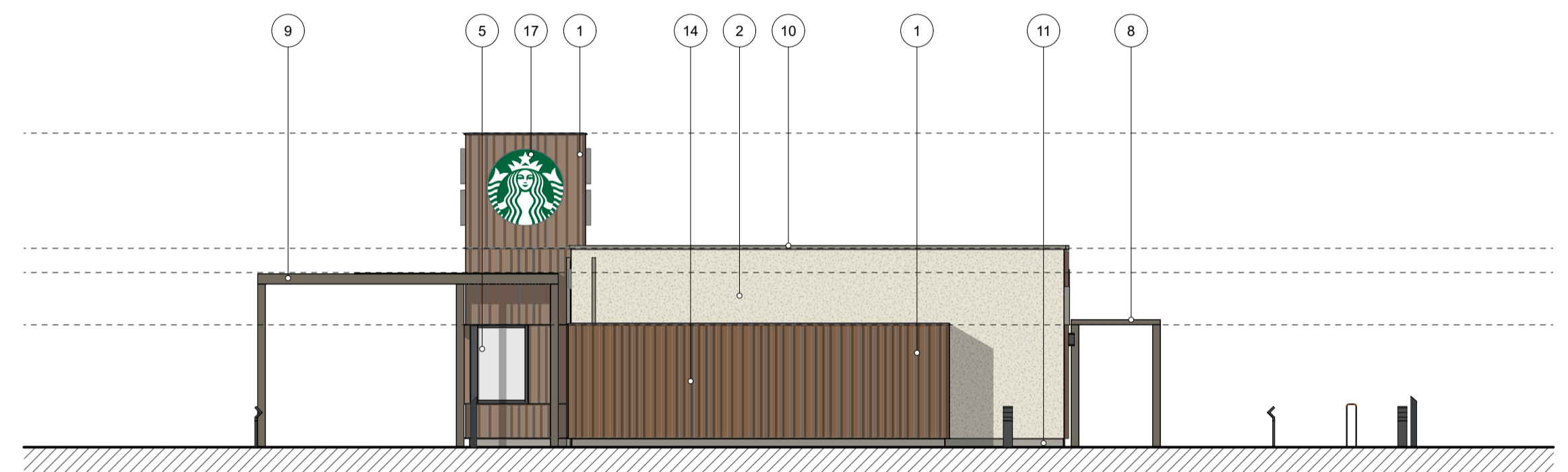
SOUTH WEST ELEVATION



SOUTH EAST ELEVATION



NORTH EAST ELEVATION




NORTH WEST ELEVATION

EXTERNAL FINISHES

1. TIMBER CLADDING - 69MM X 69MM ACCOYA BATTEN ON STAINED 9MM TRICOYA MDF - HIGH BUILD LACQUERED FINISH - TEKNOS WOODDEX AQUA CLASSIC - T8017
2. RENDER - K REND SILICONE TC 15 - ASH WHITE
3. PCC THERMALLY BROKEN ALUMINIUM RIBBON WINDOW FRAME - COLOUR: RAL 9011
4. PCC THERMALLY BROKEN ALUMINIUM OPERABLE WINDOW (CUSTOMER COLLECTION HATCH) - FRAME COLOUR: RAL 9011
5. PCC THERMALLY BROKEN ALUMINIUM WINDOW (CUSTOMER COLLECTION HATCH) - FRAME COLOUR: RAL 9011
6. PCC ALUMINIUM FRAMED SINGLE SWING DOOR (MAIN ENTRANCE) - FRAME COLOUR: RAL 9011
7. PCC ALUMINIUM FRAMED SINGLE SWING DOOR (SECONDARY ENTRANCE) - FRAME COLOUR: RAL 9011
8. FREE STANDING PERGOLA - DOUGLAS FIR WITH TEKNOS WOODDEX AQUA CLASSIC - T840
9. FREE STANDING PERGOLA WITH SOLID ROOF - DOUGLAS FIR WITH TEKNOS WOODDEX AQUA CLASSIC - T840
10. PCC ALUMINIUM COPING - FINISH COLOUR: RAL 7030
11. PCC ALUMINIUM KICK PLATE - FINISH COLOUR: RAL 7030
12. RAINWATER DRAINAGE PIPE - FINISH COLOUR: RAL 7030
13. UTILITY YARD ENCLOSURE GATE
14. UTILITY YARD ENCLOSURE FENCE
15. WALL MOUNTED EXTERNAL LIGHTING
16. 600MM X 600MM MAINTENANCE ACCESS HATCH
17. ILLUMINATED SIGNAGE SUBJECT TO SEPARATE ADVERTISEMENT APPLICATION
18. SIGNAGE SUBJECT TO SEPARATE ADVERTISEMENT APPLICATION



 <p>Kendall Kingscott Chartered Architects Chartered Building Surveyors Interior Designers CDM Services</p>	<p>Project Burrows Yard, Afan Way, Port Talbot</p>	<p>Client Aldi Stores Ltd</p>	<p>Project Number 170466-1405</p>	<p>Revision P01</p>
	<p>Client Aldi Stores Ltd</p>	<p>Project Number 170466 PORT TALBOT_ELEVATIONS.vsw</p>	<p>Revision PLANNING</p>	<p>Project Number 170466-1405</p>

Glenworth Court, Lime Kiln Close
 Stoke Gifford, Bristol BS34 5SR
 +44 (0)117 931 2062
 www.kendallkingscott.co.uk
 © Copyright Do not scale this drawing. Check all dimensions and levels on site.

Only to be used on the site for which designed. The electronic transmission of design information contained in this drawing is carried out entirely at the User's risk and Kendall Kingscott Ltd. will have no liability for any errors or inaccuracies arising therefrom. The production of amended or updated information from the user design information to the User is entirely the responsibility of the User and Kendall Kingscott Ltd. shall have no responsibility to report them unless otherwise stated.