



SOUTH WEST ELEVATION - ENTRANCE AND FREE STANDING PERGOLA



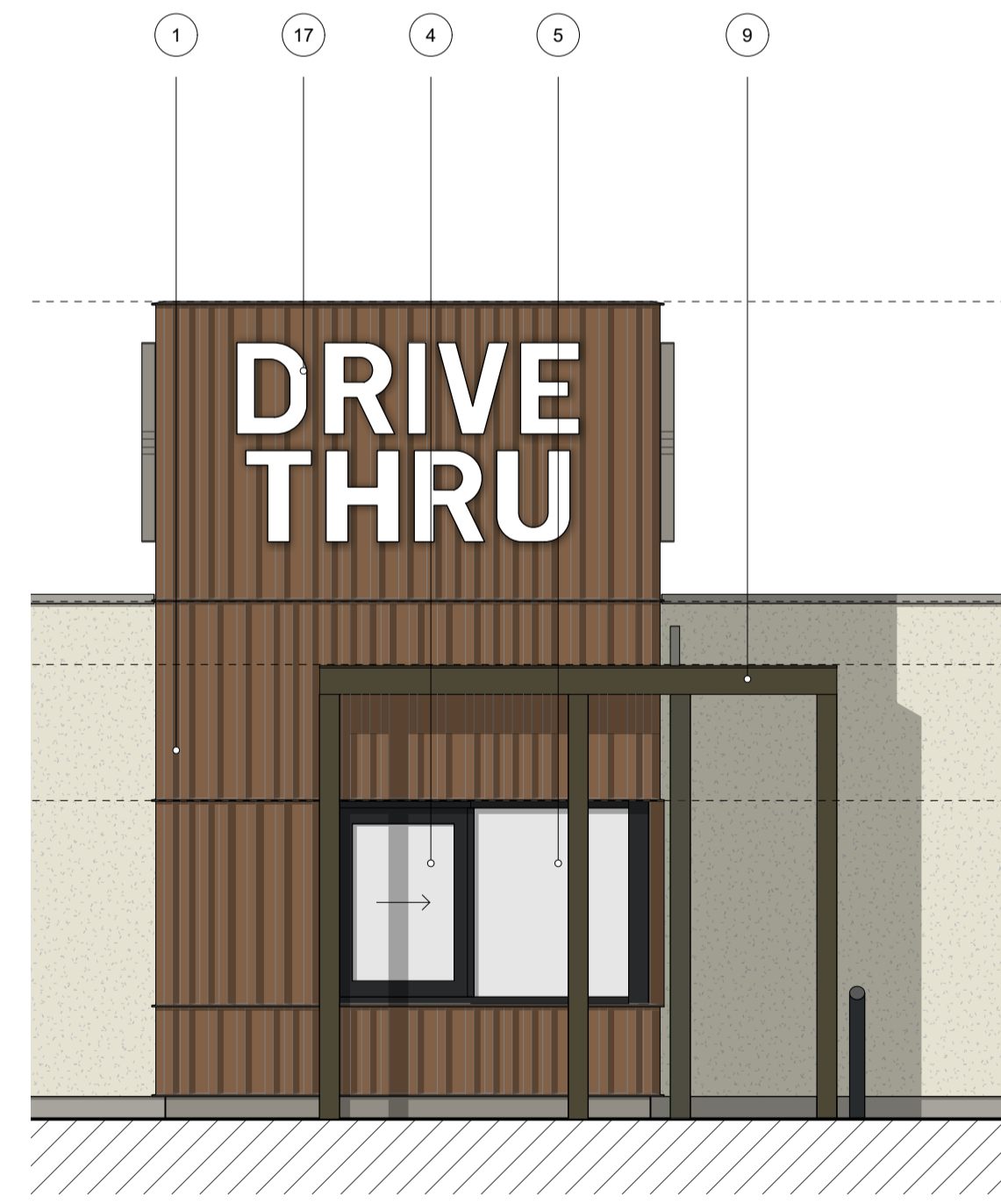
SOUTH EAST ELEVATION - ENTRANCE AND FREE STANDING PERGOLA

EXTERNAL FINISHES

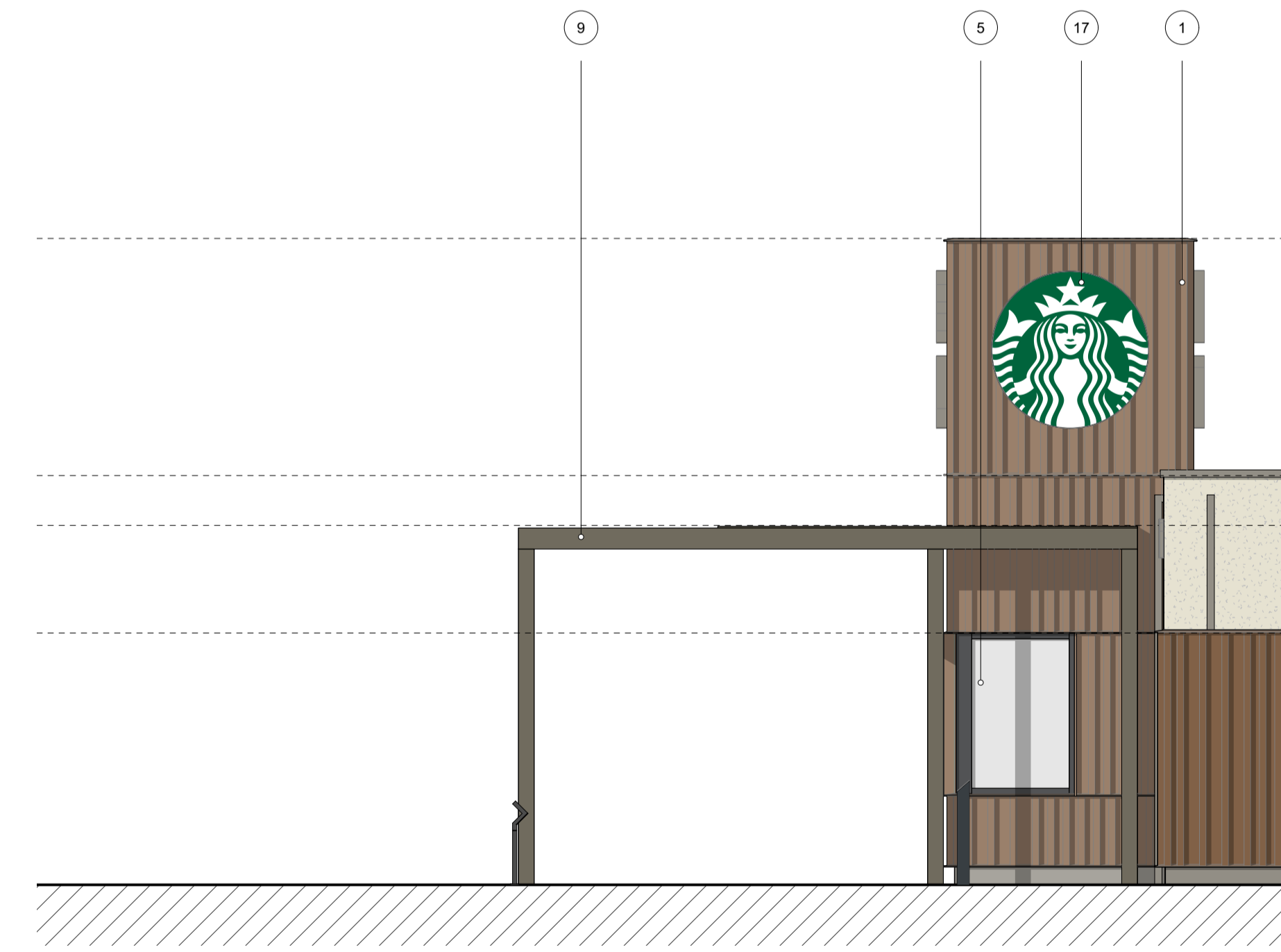
1. TIMBER CLADDING - 69MM X 69MM ACCOYA BATTEN ON STAINED 9MM TRICOYA MDF - HIGH BUILD LACQUERED FINISH - TEKNOS WOODDEX AQUA CLASSIC - T8017
2. RENDER - K REND SILICONE TC 15 - ASH WHITE
3. PCC THERMALLY BROKEN ALUMINIUM RIBBON WINDOW FRAME - COLOUR: RAL 9011
4. PCC THERMALLY BROKEN ALUMINIUM OPERABLE WINDOW (CUSTOMER COLLECTION HATCH) - FRAME COLOUR: RAL 9011
5. PCC THERMALLY BROKEN ALUMINIUM WINDOW (CUSTOMER COLLECTION HATCH) - FRAME COLOUR: RAL 9011
6. PCC ALUMINIUM FRAMED SINGLE SWING DOOR (MAIN ENTRANCE) - FRAME COLOUR: RAL 9011
7. PCC ALUMINIUM FRAMED SINGLE SWING DOOR (SECONDARY ENTRANCE) - FRAME COLOUR: RAL 9011
8. FREE STANDING PERGOLA - DOUGLAS FIR WITH TEKNOS WOODDEX AQUA CLASSIC - T840
9. FREE STANDING PERGOLA WITH SOLID ROOF - DOUGLAS FIR WITH TEKNOS WOODDEX AQUA CLASSIC - T840
10. PCC ALUMINIUM COPING - FINISH COLOUR: RAL 7030
11. PCC ALUMINIUM KICK PLATE - FINISH COLOUR: RAL 7030
12. RAINWATER DRAINAGE PIPE - FINISH COLOUR: RAL 7030
13. UTILITY YARD ENCLOSURE GATE
14. UTILITY YARD ENCLOSURE FENCE
15. WALL MOUNTED EXTERNAL LIGHTING
16. 600MM X 600MM MAINTENANCE ACCESS HATCH
17. ILLUMINATED SIGNAGE SUBJECT TO SEPARATE ADVERTISEMENT APPLICATION
18. SIGNAGE SUBJECT TO SEPARATE ADVERTISEMENT APPLICATION



SOUTH EAST ELEVATION - DRIVE THRU




NORTH EAST ELEVATION - DRIVE THRU




NORTH WEST ELEVATION - DRIVE THRU





Chartered Architects
Chartered Building Surveyors
Interior Designers
CDM Services



Project: Burrows Yard, Afan Way, Port Talbot

Client: Aldi Stores Ltd

Scale: 1:50

ISO A1

170466 PORT TALBOT_ELEVATIONS.vwr

10/05/23

JS GS

PLANNING

P01 10/05/23 JS GS First Issue

Revision

170466-1406 P01

Only to be used on the site for which designed. The electronic transmission of design information contained in this drawing is carried out entirely at the User's risk and Kendall Kingscott Ltd. will have no liability for any errors or inaccuracies arising therefrom. The production of amended or updated information from the said design information to the User is entirely the responsibility of the User and Kendall Kingscott Ltd. shall have no responsibility to support third party software.