



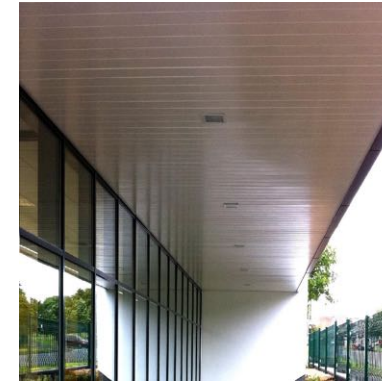
1 Shopfronts / window frames - polyester powder coated aluminium, colour - dark grey ral 7016 (anthracite) by Senior Architectural Systems



2 Canopy cladding - polyester powder coated aluminium, colour - dark grey ral 7016 (anthracite)



3 External escape doors and frames, steel polyester powder coated finish, colour - dark grey ral 7016 (anthracite)



4 External soffit planks to cantilvered canopy, 150mm wide ash plank white soffit planks, colour white, from Ash and Lacy



5 Roof - KINGSPAN KS 1000TD (TopDek) COMPOSITE ROOF PANELS. ANTHRACITE GREY RAL 7016



6 Wall - Kingspan KS1000RW anthracite grey cladding RAL 7016



7 Wall - Kingspan KS1000RW metallic silver cladding RAL 9006



8 Blockleys brick ltd. 'smooth black' with tarmac y14 (black) coloured mortar brickwork to building plinth



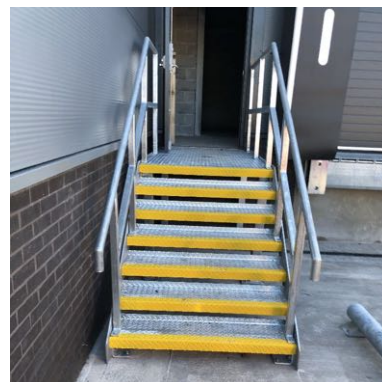
9 Sectional overhead loading bay door - pvf coated steel, ral 7016 (anthracite). Curtain Dock Shelter, colour black



10 Fascia dark grey ral 7016 (anthracite)



11 Rainwater goods polyester powder coated aluminium (ral 7016 anthracite grey).



12 Galvanised steel steps to drivers door.

FOR LOCATION OF MATERIALS SHOWN ABOVE PLEASE REFER TO PROPOSED ELEVATIONS 170466-1400 AND ROOF PLAN 170466-1360



Chartered Architects
Chartered Building Surveyors
Interior Designers
CDM Services

Project
Burrows Yard, Afan Way, Port Talbot

Client
Aldi Store Ltd

Glentworth Court, Lime Kiln Close
Stoke Gifford, Bristol BS34 8SR
+44 (0)117 931 2062
www.kendallkingscott.co.uk

Scale Paper Size Filename
NTS ISO A3 170466 External Materials MASTER.vwx
© Copyright Do not scale this drawing

P01 01/05/23 JS GS First issue
Rev Date By Ap Note

Drawing Title
PROPOSED BUILDING MATERIALS - ALDI

Project Number Drawing Number Revision
170466-1700 P01

Date Drawn Checked Purpose/Status
01/05/23 JS GS PLANNING

Check all dimensions and levels on site

Only to be used on the site for which designed. The electronic transmission of designs/information contained in this drawing is carried out entirely at the User's risk and Kendall Kingscott Ltd. will have no liability for any errors or inaccuracies arising therefrom. The production of amended or updated information from the said designs/information by the User is entirely the responsibility of the User and Kendall Kingscott Ltd. shall have no responsibility in respect thereof whatsoever.