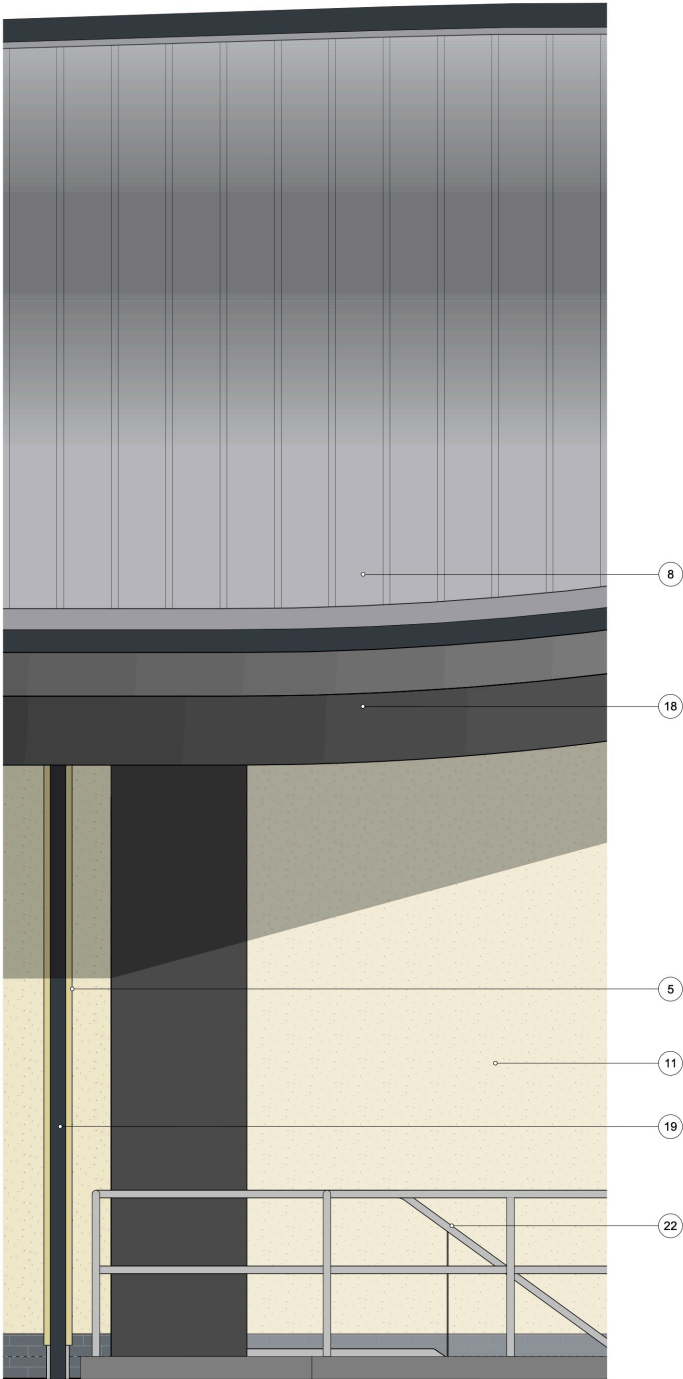


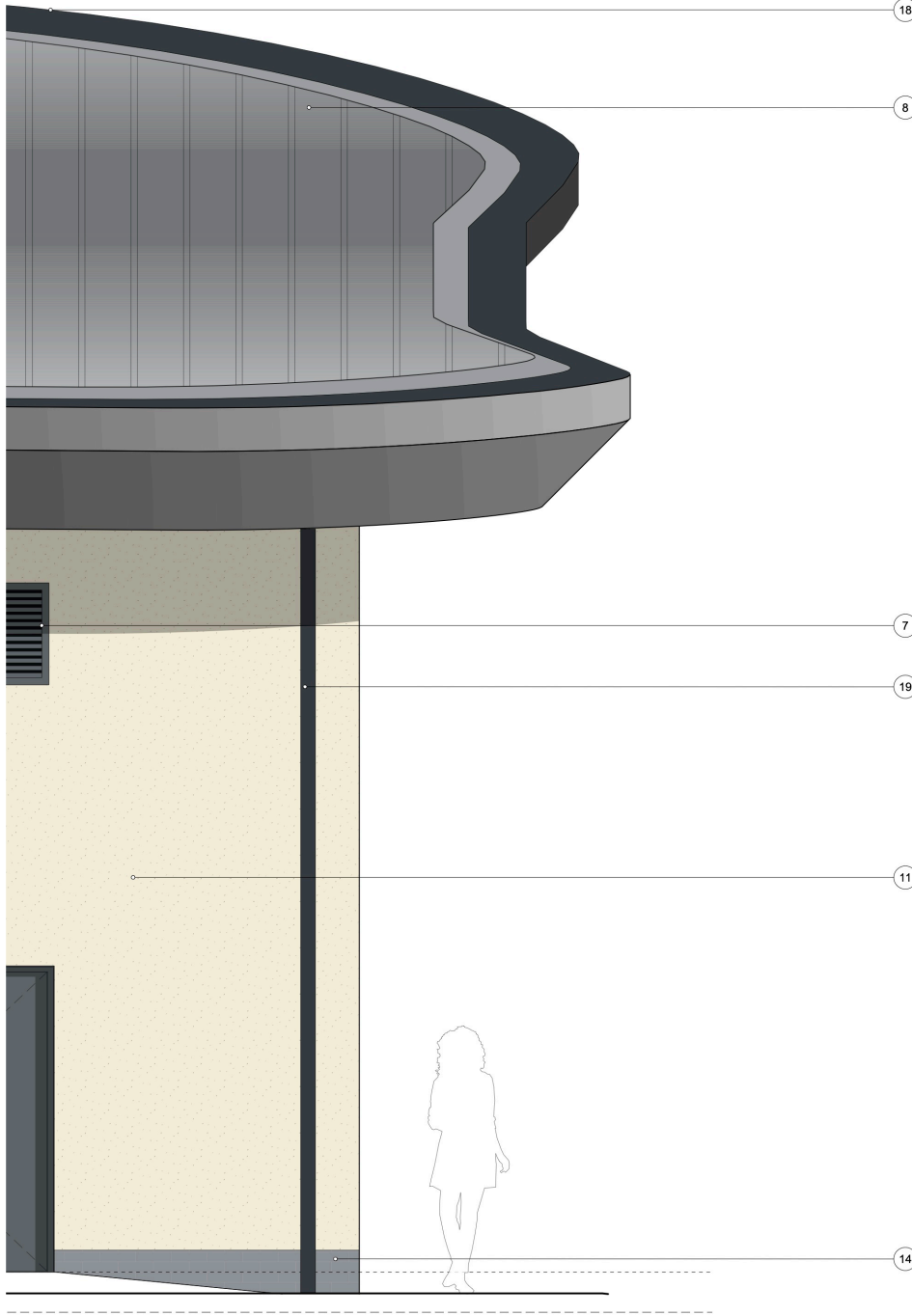
SOUTH EAST ELEVATION

EXTERNAL FINISHES

1. FULL HEIGHT SHOPFRONT GLAZING ABOVE CANOPY
2. PROJECTING GLAZED DOUBLE-HEIGHT LANTERN TO EMPHASIZE STORE ENTRANCE
3. CANOPY ABOVE SHOPFRONT TO PROVIDE SOLAR & WEATHER PROTECTION. DOUBLES UP AS COVERED WALKWAY TO STORE ENTRANCE WITH COLONNADE. CANOPY FASCIA - POWDER COATED ALUMINIUM TO BS6496 (RAL 7016)
4. ASH AND LACY 150MM WIDE ASH PLANK WHITE SOFFIT PLANKS
5. NATURAL TIMBER CLAD CIRCULAR COLUMNS ON GALVANISED STEEL FEET TO SUPPORT CANOPY
6. -
7. EXTERNAL WALL LOUVRES
8. STANDING SEAM ROOF, STUCCO-EMBOSSSED NATURAL ALUMINIUM FINISH WITH A PROTECTIVE PLATING AND NON-COLOUR COATING.
9. LOCAL LIMESTONE STONEWORK
10. TIMBER CLADDING IN A VERTICAL HIT AND MISS PATTERN
11. OFF-WHITE THROUGH COLOUR RENDER, TYROLEAN TEXTURED FINISH
12. VERTICAL LED LIGHTING STRIPS



13. SHOPFRONTS - POLYESTER POWDER COATED ALUMINIUM (RAL 7016).
14. SMOOTH BLACK BRICKWORK WITH BLACK COLOURED MORTAR
15. ENTRANCE - POLYESTER POWDER COATED ALUMINIUM (RAL 7016 ANTHRACITE).
16. STEEL ESCAPE DOORS - POLYESTER POWDER COATED COLOUR GREY (RAL 7016) (FRAME COLOUR RAL 7016).
17. WINDOWS - POLYESTER POWDER COATED ALUMINIUM (RAL 7016).
18. FASCIA'S - POWDER COATED ALUMINIUM TO BS6496 (SILVER).
19. RAINWATER GOODS POLYESTER POWDER COATED ALUMINIUM (RAL 7016).
20. SECTIONAL OVERHEAD DOOR - PVF COATED STEEL (RAL 7016).
21. TROLLEY BAY RAILS - SATIN FINISH STAINLESS STEEL, MARINE GRADE.
22. HANDRAILS - GALVANISED TUBULAR STEEL
23. ILLUMINATED 'PORTHCAWL' SIGNAGE
24. EXTERNAL SOLAR SHADING / LOUVRES SPANNING BETWEEN COLUMNS
25. PEBBLE EFFECT CLADDING PANEL



Kendall Kingscott

Chartered Architects
Chartered Building Surveyors
Interior Designers
CDM Services

Glentworth Court, Lime Kiln Close
Stoke Gifford, Bristol BS34 6SR
+44 (0)117 931 2062
www.kendallkingscott.co.uk

Project
Aldi Porthcawl, Salt Lake North

Client
Aldi Stores Ltd

Scale
1:25 ISO A1 200959 ELEVATION MASTER.vwx

© Copyright

Date
13/04/21

Drawn
JS

Checked
GS

Check all dimensions and levels on site

P5	07/07/21	JS	GS	PI's removed from roof.
P4	21/06/21	JS	GS	Escape door added from warehouse.
P3	08/06/21	JS	GS	STANDING SEAM ROOF FINISH UPDATED
P2	29/05/21	JS	GS	Roof and canopy profile amended following pre-application consultation.
P1	13/04/21	JS	GS	First Issue
Rev	Date	By	Ap	Note
Drawing Title				ELEVATION DETAIL SOUTH EAST ELEVATION
Project Number		Drawing Number	Revision	
200959-1424			P5	
Date		Drawn	Checked	Purpose/Status
13/04/21		JS	GS	PLANNING