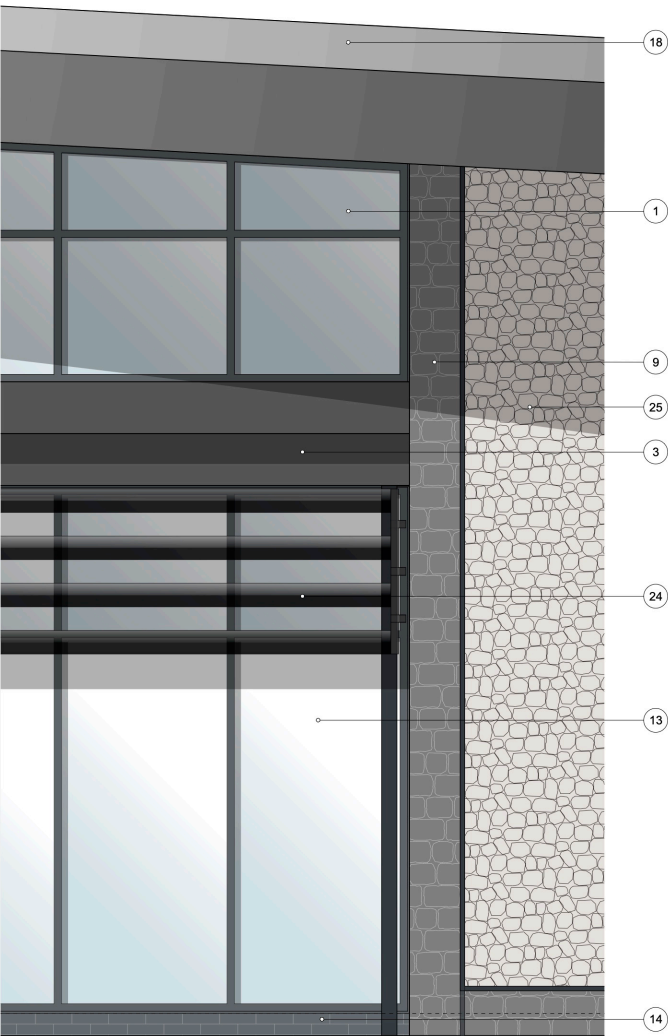


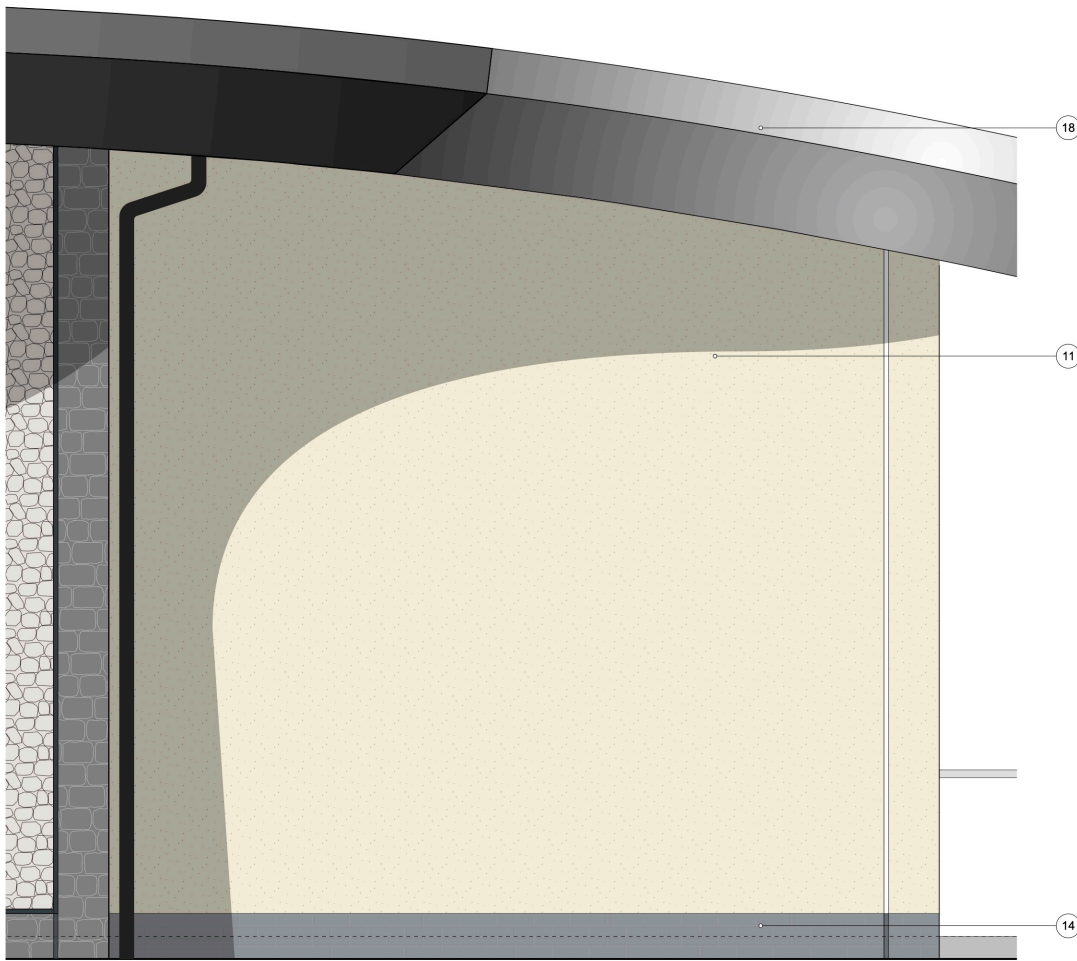
SOUTH WEST ELEVATION



EXTERNAL FINISHES

1. FULL HEIGHT SHOPFRONT GLAZING ABOVE CANOPY
2. PROJECTING GLAZED DOUBLE-HEIGHT LANTERN TO EMPHASIZE STORE ENTRANCE
3. CANOPY ABOVE SHOPFRONT TO PROVIDE SOLAR & WEATHER PROTECTION. DOUBLES UP AS COVERED WALKWAY TO STORE ENTRANCE WITH COLONNADE. CANOPY FASCIA - POWDER COATED ALUMINIUM TO BS6496 (RAL 7016)
4. ASH AND LACY 150MM WIDE ASH PLANK WHITE SOFFIT PLANKS
5. NATURAL TIMBER CLAD CIRCULAR COLUMNS ON GALVANISED STEEL FEET TO SUPPORT CANOPY
6. -
7. EXTERNAL WALL LOUVRES
8. STANDING SEAM ROOF, STUCCO-EMBOSSSED NATURAL ALUMINIUM FINISH WITH A PROTECTIVE PLATING AND NON-COLOUR COATING.
9. LOCAL LIMESTONE STONework
10. TIMBER CLADDING IN A VERTICAL HIT AND MISS PATTERN
11. OFF-WHITE THROUGH COLOUR RENDER, TYROLEAN TEXTURED FINISH
12. VERTICAL LED LIGHTING STRIPS



13. SHOPFRONTS - POLYESTER POWDER COATED ALUMINIUM (RAL 7016).
14. SMOOTH BLACK BRICKWORK WITH BLACK COLOURED MORTAR
15. ENTRANCE - POLYESTER POWDER COATED ALUMINIUM (RAL 7016 ANTHRACITE).
16. STEEL ESCAPE DOORS - POLYESTER POWDER COATED COLOUR GREY (RAL 7016) (FRAME COLOUR RAL 7016).
17. WINDOWS - POLYESTER POWDER COATED ALUMINIUM (RAL 7016).
18. FASCIAS - POWDER COATED ALUMINIUM TO BS6496 (SILVER).
19. RAINWATER GOODS POLYESTER POWDER COATED ALUMINIUM (RAL 7016).
20. SECTIONAL OVERHEAD DOOR - PVF COATED STEEL (RAL 7016).
21. TROLLEY BAY RAILS - SATIN FINISH STAINLESS STEEL, MARINE GRADE.
22. HANDRAILS - GALVANISED TUBULAR STEEL
23. ILLUMINATED 'PORTHCAWL' SIGNAGE
24. EXTERNAL SOLAR SHADING / LOUVRES SPANNING BETWEEN COLUMNS
25. PEBBLE EFFECT CLADDING PANEL





Project
Aldi Porthcawl, Salt Lake North

Client
Aldi Stores Ltd

Location
**Glenworth Court, Lime Kiln Close
Stoke Gifford, Bristol BS34 6SR**

Scale
1:25

Paper Size
ISO A1

Filename
200959 ELEVATION MASTER.vwx

© Copyright
Do not scale this drawing

Drawing Title
**ELEVATION DETAIL
SOUTH WEST ELEVATION**

Project Number	Drawing Number	Revision
200959-1425		P6

Date	Drawn	Checked	Purposed/Status
13/04/21	JS	GS	PLANNING

P6 27/07/21 JS GS Underfloor heating manifold moved inside the building.

P5 07/07/21 JS GS P6's removed from roof.

P4 21/06/21 JS GS Pebble effect feature wall added to south-west elevation.

P3 08/06/21 JS GS STANDING SEAM ROOF FINISH UPDATED

P2 29/05/21 JS GS Roof and canopy profile amended following pre-application consultation.

P1 13/04/21 JS GS First Issue

Rev	Date	By	Ap	Note

Only to be used on the site for which designed. The electronic transmission of design information contained in this drawing is carried out entirely at the User's risk and Kendall Kingscott Ltd. will have no liability for any errors or inaccuracies arising therefrom. The production of amended or updated information from the said design information by the User is entirely the responsibility of the User and Kendall Kingscott Ltd. shall have no responsibility to inspect thereof whatsoever.