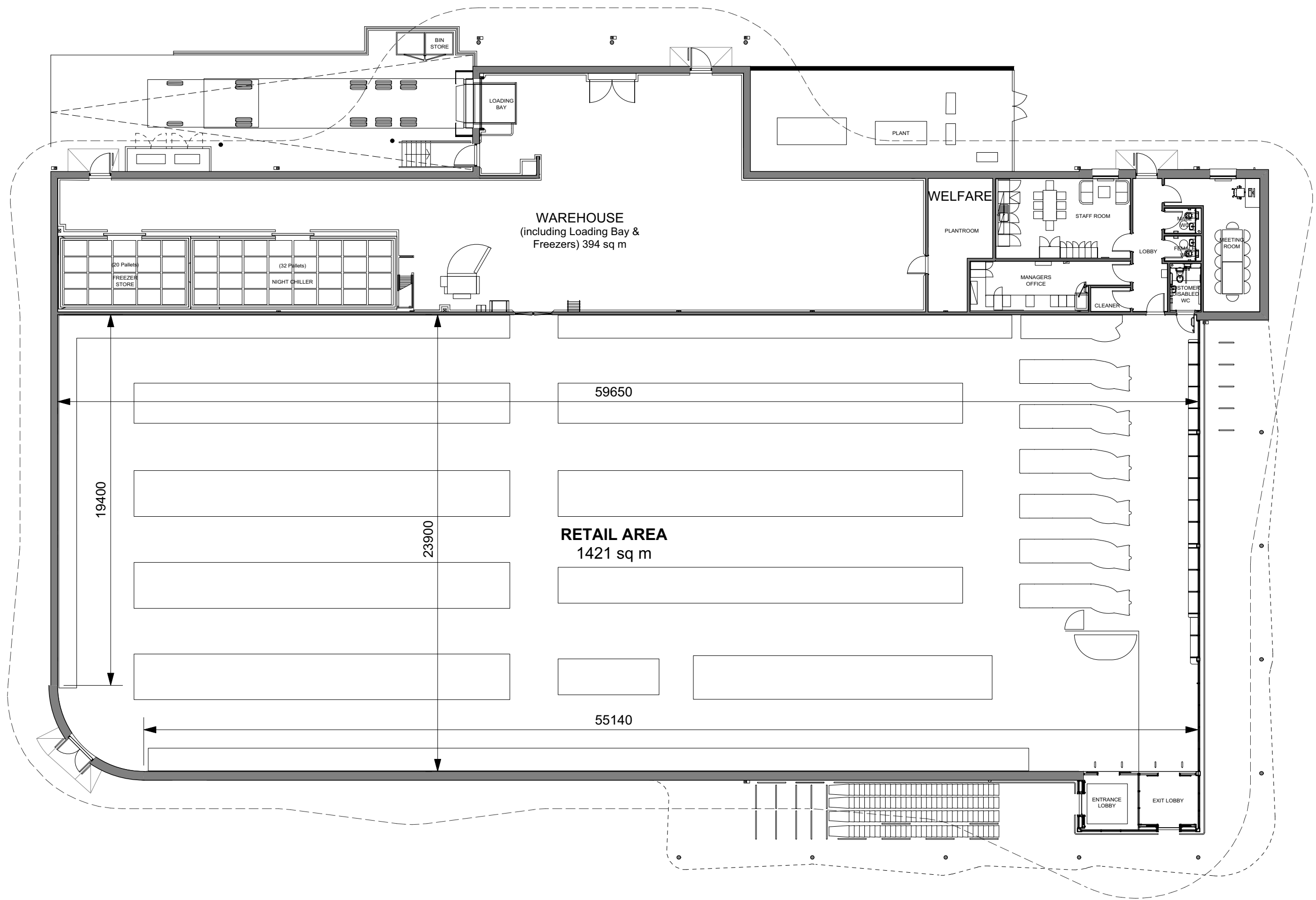


ALDI STORE AREAS		
Gross External Area (GEA)	2,045 sqm	22,012 sqft
Gross Internal Area (GIA)	1,965 sqm	21,151 sqft
Retail Area	1,421 sqm	15,296 sqft
Welfare Block & Other (Including Ext. Lobby and Internal Walls)	150 sqm	1,615 sqft
Warehouse (Including Loading Bay & Freezers)	394 sqm	4,241 sqft



P4	27/07/21	JS	GS	Underfloor heating manifold moved inside. Cold room condensers moved to loading bay.
P3	21/06/21	JS	GS	External wall thickness revised to show were change in material finish occurs. External plant updated. Warehouse door added. BoC and BoF relocated.
P2	28/05/21	JS	GS	Roof and canopy outline revised following pre-app consultation.
P1	13/0421	JS	GS	First Issue
Rev	Date	By	Ap	Note



Chartered Architects
Chartered Building Surveyors
Interior Designers
CDM Services

Glentworth Court, Lime Kiln Close
Stoke Gifford, Bristol BS34 8SR
+44 (0)117 931 2062
www.kendallkingscott.co.uk



Project
Aldi Porthcawl, Salt Lake North

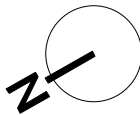
Client
Aldi Stores Ltd

Scale 1:200
Paper Size ISO A2
Filename 200959 PLANS MASTER.vwx
© Copyright Do not scale this drawing

Drawing Title
PROPOSED FLOOR PLAN

Project Number Drawing Number Revision
200959-1350 P4

Date 13/04/21
Drawn JS
Checked GS
Purpose/Status PLANNING
Check all dimensions and levels on site



0 10 15 20 25 M
Scale 1:200 at A2 sheet size

Only to be used on the site for which designed. The electronic transmission of designs/information contained in this drawing is carried out entirely at the User's risk and Kendall Kingscott Ltd. will have no liability for any errors or inaccuracies arising therefrom. The production of amended or updated information from the said designs/information by the User is entirely the responsibility of the User and Kendall Kingscott Ltd. shall have no responsibility in respect thereof whatsoever.