



A new Aldi food store off Caernarfon Road, Pwllheli

Computer Generated Image of the proposed store



Welcome to our virtual exhibition

Aldi, the award-winning discount food retailer, is bringing forward proposals to develop land just off Caernarfon Road, Pwllheli, with a new, high-quality food store.

The proposals would provide an attractive, modern Aldi food store in a convenient location for the residents of Pwllheli. If approved, the store will create up to 40 full time equivalent jobs, alongside further opportunities associated with construction and the supply chain.

Aldi is aware that there is a lack of discount supermarket options for residents in Pwllheli. As customers continue to look for better-value products to help make their money go further, it is important that residents have access to a wide range of shopping facilities. Aldi's proposal would provide an attractive, modern Aldi food store in an accessible location for the residents of Pwllheli, improving customer choice and enhancing customer experience.

As part of the statutory consultation process, Aldi triggered the 28-day pre-application consultation period on Monday 04 July 2022.

Aldi is looking to submit its planning application to Gwynedd Council in the coming months.

We look forward to hearing your thoughts and feedback on our proposals.





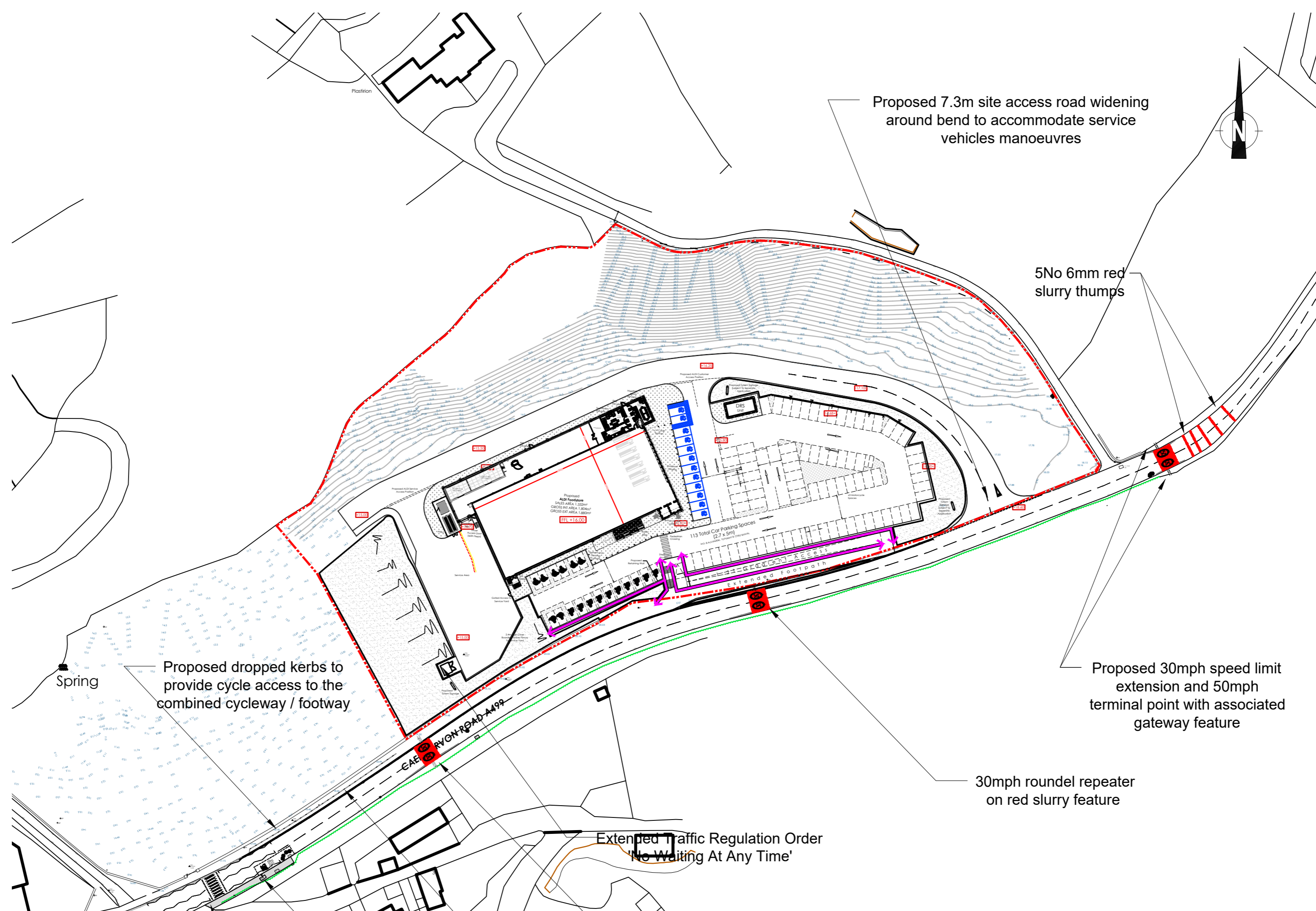
Highways, Access & Parking

Highways & Traffic

Aldi has undertaken a Transport Assessment as part of the planning application to ensure the proposed food store does not have an adverse impact on the local road network.

The Transport Assessment has evaluated the local traffic flows around Caernarfon Road with and without the proposed development and has concluded that the proposed development would not have a material impact on the local highway network.

The scope of this assessment has been agreed with the Council's Highways Officer.



Deliveries

Aldi stocks a carefully selected range of approximately 1,800 lines, compared with supermarkets such as Asda or Sainsbury's that stock over 20,000 lines. As a result, an Aldi food store will require only three to four deliveries per day.

We operate store deliveries outside peak transport hours. All manoeuvring takes place within the site, and a unique delivery ramp arrangement removes the need for external activity. This process is not only efficient, but also reduces any potential noise disturbance to neighbouring properties.

Access

Vehicular access to the proposed food store will be via a single entrance from Caernarfon Road. This access road will continue to the north of the site for delivery vehicles to access the separate service area.

The existing footpath on Caernarfon Road will be extended to provide pedestrian access to the Aldi Store.

A new bus stop and pedestrian crossing will also be installed on Caernarfon Road to improve town centre linkages.

Parking

The new Aldi store will provide free customer parking for 113 cars, including eight disabled bays, 10 parent-and-child spaces, three motorcycle spaces and four electric vehicle charging spaces and capacity for a further 20 (24 in total).

The proposals will also include 14 cycles spaces, as part of our commitment to promoting sustainable modes of transport wherever possible.



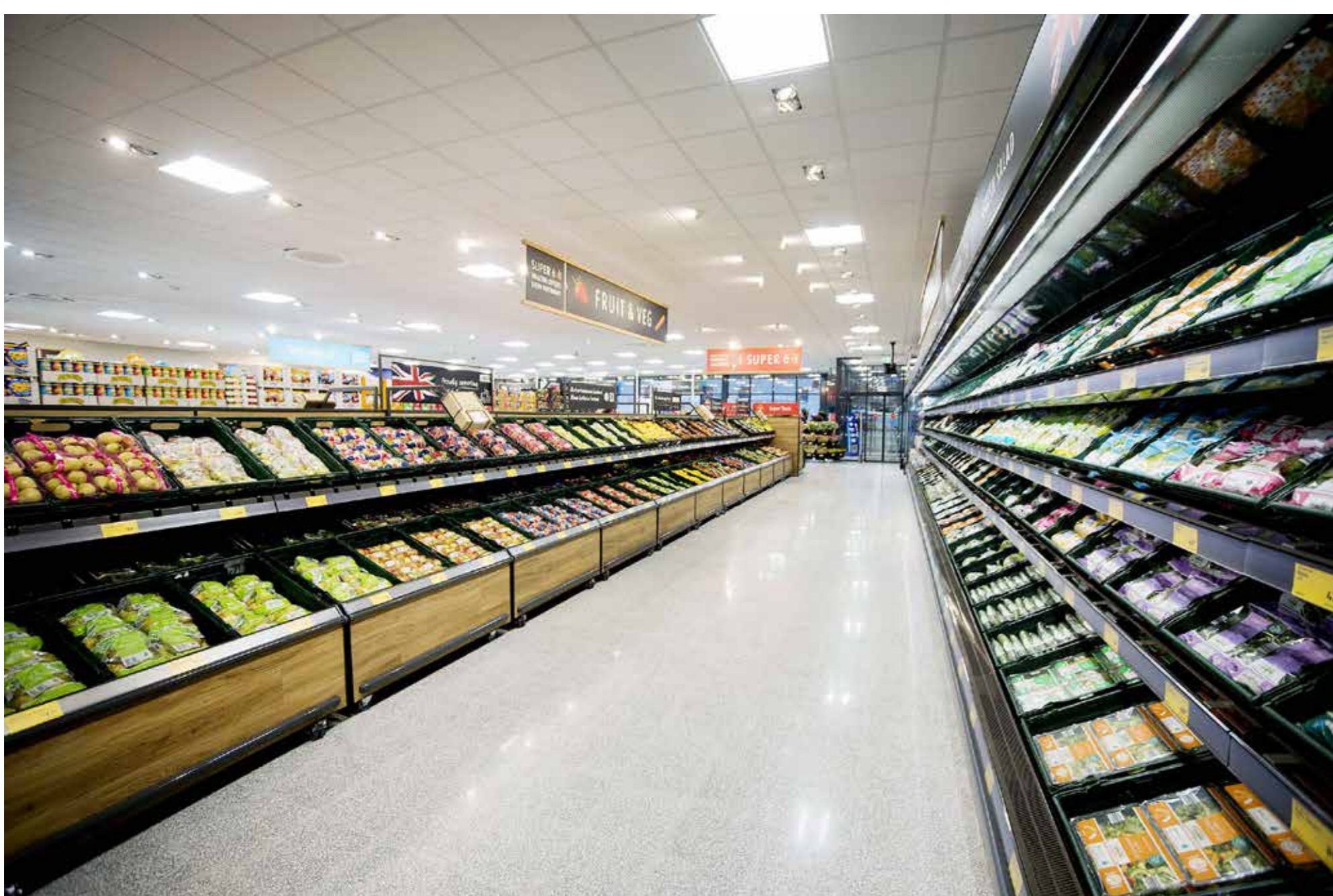


Design & Landscaping

Aldi plans to introduce a contemporary food store, designed to complement its setting within the local area of Pwllheli. We have carefully designed our proposal to ensure the scheme would sit comfortably within its wider surroundings.

Our proposal for the Aldi store will provide a high-quality and attractive scheme. To ensure an excellent long-term appearance, Aldi uses high-quality materials both inside and outside its buildings. The new Aldi store will utilise a combination of anthracite grey and metallic silver cladding with a charcoal brickwork plinth. It will have large elements of glazing along the eastern elevation facing the customer parking and access road into the site.

high-level ribbon windows to the southern elevation, together with a contemporary pressed metal feature canopy assist in creating an active facade.



Landscaping

Aldi takes great pride in the quality and design of its stores, with landscaping a key part of creating an appealing and welcoming environment.

Landscaping across the site would aim to deliver a mix of tree and shrub planting, complementing the attractive setting for the store. Aldi will work closely with local residents and businesses to ensure that the landscaping protects their boundaries and keeps their properties well screened.





About us

Part of your community

We are proud to be at the heart of local communities across the country. To continue our community-led culture, we have set out a number of “neighbour-friendly” practices:

- Aldi aims to recruit its store managers and staff from the local area, which allows them to react quickly and sympathetically to any local issues
- Unlike most supermarkets, which operate 24-hour opening periods, our stores typically open between 8am and 10pm Monday to Saturday, and between 10am and 4pm on Sundays
- Aldi only stocks around 1,800 lines, compared to a typical supermarket which stocks 15,000 – 40,000, meaning Aldi food stores only need around 3-4 deliveries per day
- Aldi’s unique delivery system enable products to be transferred from the vehicle straight to store, without the need for external movement – minimising the potential for any disruption
- We are committed to being responsible neighbours, and work closely with the local community to ensure that any disturbance is kept to a minimum, from construction right through to when the store is open

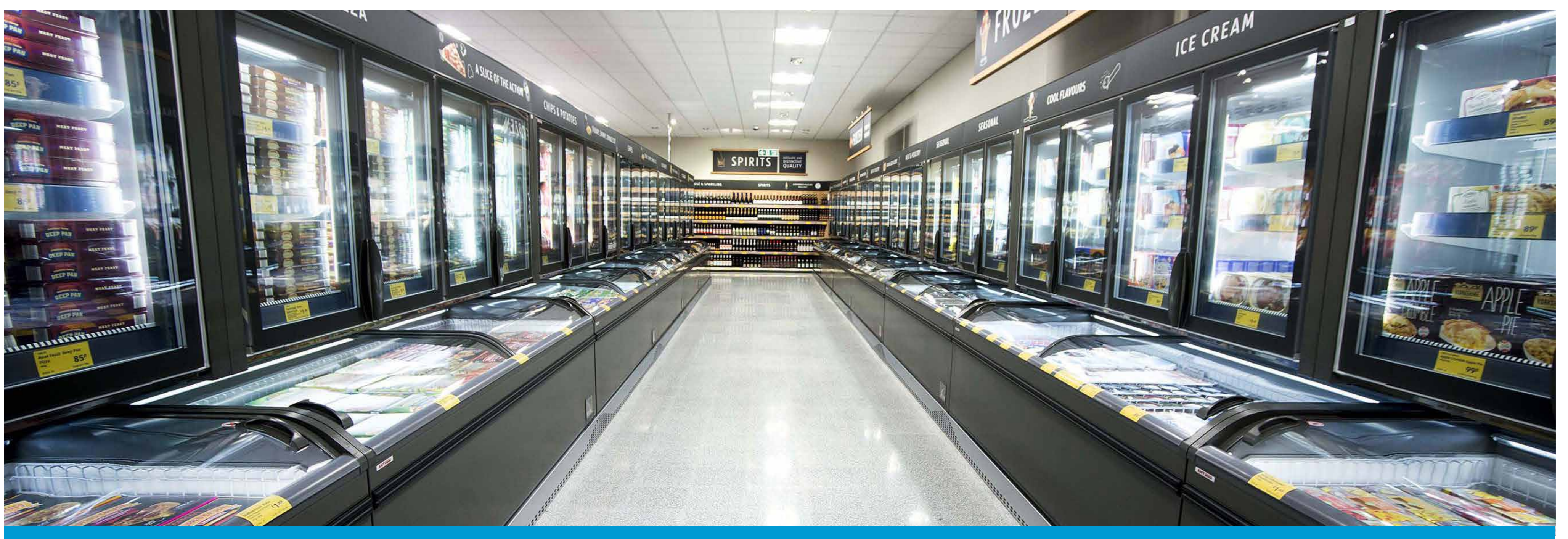
Local Jobs

With up to 40 new full-time roles available at our Caernarfon Road store, we are committed to providing jobs for local communities.

With one of the best working environments in the UK and one of the highest rates of pay in the sector, this new store will provide local people with Aldi’s training and career growth opportunities.

Aldi’s rates of pay are significantly higher than the Government’s National Living Wage and also above the Living Wage Foundation’s recommended national rates.

More information on career opportunities can be found at www.aldirecruitment.co.uk



Sustainability

Aldi is already meeting high standards of energy efficiency and is committed to responsible energy usage. Since 2017, we use only 100% renewable electricity to power our stores.

Aldi only uses environmentally friendly, energy-efficient refrigeration and lighting. A heat recovery system from the refrigeration condensers provides 100% of heating for the store, re-using otherwise wasted machinery heat.

Aldi is committed to using materials for the development of our stores that perform well with regard to the environment,

either through composition or manufacture. We aim to minimise energy use in producing and transporting building materials, using recycled material from local sources as far as possible, and by choosing materials with low embodied energy.

Where possible, materials required for the construction of a development will be procured from locally available stock. Where space exists, recyclable waste would be sorted on site and taken to appropriate recycling facilities.





A new Aldi food store on Caernarfon Road, Pwllheli



Computer Generated Image of proposed new Aldi store

