



# Proposals for a new Aldi store at Evreux Way, Rugby

Computer Generated Image of the proposed view from Corporation Street



## Welcome to our virtual exhibition

**Award-winning discount food retailer Aldi, is bringing forward a planning application for a new store at Evreux Way, Rugby.**

Our proposals will see a multi-million-pound investment in the heart of Rugby. The site is currently occupied by CEMEX who are planning to move their operations to another site nearby.

Aldi's investment here in Rugby will deliver a new retail store to help support the town centre to thrive in a post-Covid world. We know that in other locations, Aldi attracts customers to surrounding shops, which improves the trading and footfall of those stores. We also offer free parking for 90 minutes, meaning that Aldi customers will have more than enough time to visit other local shops as part of their visit to Rugby town centre.

Our plans will create new jobs and investment in the town centre while also attracting new visitors to Rugby, helping to boost the local economy.

Thank you for visiting our virtual public exhibition today. If you have any comments, queries or questions, please get in touch by emailing [feedback@consultation-online.co.uk](mailto:feedback@consultation-online.co.uk) or calling the freephone information line on **0800 298 7040**.

## Supporting the transformation of Rugby Town Centre

Aldi plans to invest millions of pounds in transforming the site off Evreux Way in Rugby town centre.

Our plans will help support wider regeneration and create a welcoming and attractive entrance to this side of the town.

## Aldi's Cost of Living Pledge

Aldi remains committed to offering high quality produce at the lowest possible price. In these challenging times, we continue to work with our suppliers, including British farmers and producers to support our customers as inflation rises.

Aldi was named the UK's Cheapest Supermarket for 2021 by consumer champion, Which?

Aldi focuses on quality rather than quantity, stocking a carefully-curated range of groceries that shoppers need. Helping us to pass on savings to customers.





# Our Proposal



## A local community facility

Aldi is proud to invest in local communities across the UK. We take our role seriously and understand the impact our work can have on people who need support.

- Aldi plans to increase the amount we spend with British suppliers by £3.5bn a year by 2025.
- In 2021 we donated 10 million meals to families in need, to help combat hunger's devastating effects.
- Aldi works with community engagement platform Neighbourly to help combat hunger's devastating effects, as it continues to fight against child food poverty as no child should ever go hungry.
- We are proud to accept Free School Meal vouchers for the purchase of food and groceries.

## Our proposal for Rugby offers:

- A £5m+ investment into the local economy
- A brand new food store with a net sales area of 1,315 sqm
- A single-storey building improving the view from Evreux Way and Corporation Street
- 93 car parking spaces including 6 dedicated accessible bays and 6 parent & child bays
- 4 electric vehicle charging points with additional infrastructure installed for more in the future
- Free car parking at the Aldi store for up to 90 minutes with access off Corporation Street
- The creation of up to 45 new jobs for local people
- Additional employment opportunities during construction of the store and through the supply chain
- Attractive landscaping incorporated around the site to improve its appearance





# Design & Landscaping

## A design fit for Rugby

The proposed food store would have a modern design that helps to support plans to regenerate Rugby town centre. Our new stores have a range of sustainability credentials that ensures our offering is fit for purpose and good for the environment.

## Landscaping

Aldi takes great pride in the quality and design of its stores, with landscaping a key part of our plans. The view from Evreux Way and Corporation Street would be greatly improved, as well as provide an outdated site a much-needed uplift, which will make this part of the town a more attractive setting.

On the site itself, low level shrubs and new tree planting will help to break up the site, creating a welcoming environment for shoppers.

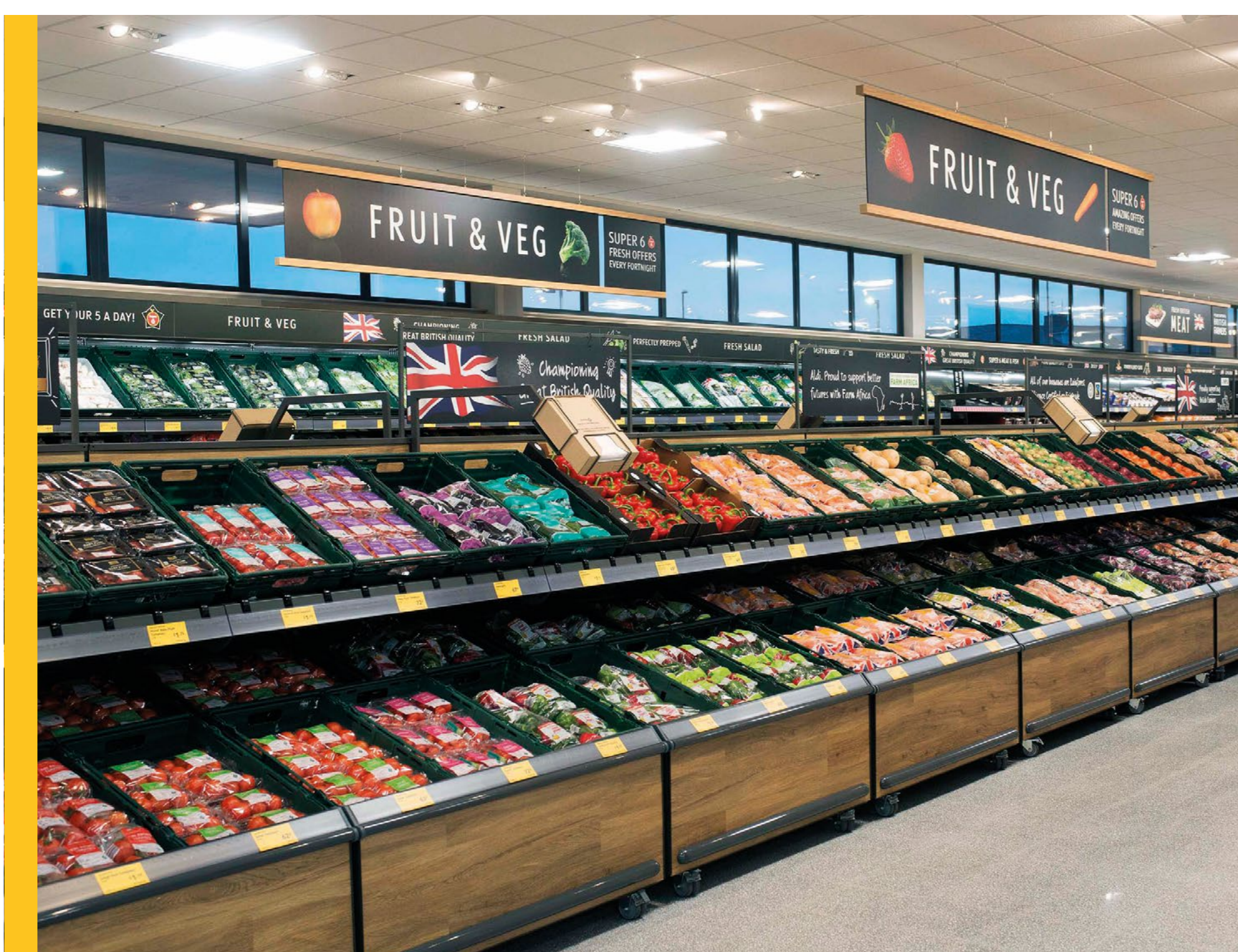
## Energy efficiency

Aldi is already meeting high standards of energy efficiency and is committed to responsible energy usage. We will install solar panels on this and all other new stores as part of our plan to reduce our environmental impact.

All Aldi stores use environmentally friendly, energy-efficient refrigeration and LED lighting both internally and externally.

A heat recovery system from the refrigeration condensers provides almost all the heating for our stores, re-using otherwise wasted machinery heat.

All new Aldi stores will have doors on their fridges as standard, reducing each store's energy consumption by about 20%. This is equivalent to a carbon emissions saving of up to 20 tonnes per store each year.





# Highways and Car Parking

## Parking & Access

Access to the Aldi store for cars, bicycles and pedestrians will be from Corporation Street.

The new Aldi store will provide free customer parking for 90 minutes with 93 spaces, including 6 disabled bays and 6 parent & child bays.

There will also be 4 electric vehicle charging points with additional infrastructure installed for further charging points in the future.

Aldi intends to provide improved pedestrian and cycle facilities to enable local people to be able to access the store safely.

## Traffic

Aldi is undertaking a Transport Assessment as part of the planning application. This will establish if there are any traffic impacts of the proposed development and consider whether there is a need for mitigation.

The assessment will look at the operation of local roads both with and without the proposed development in place. The scope of this assessment will be agreed with the Council's Highways Officer.

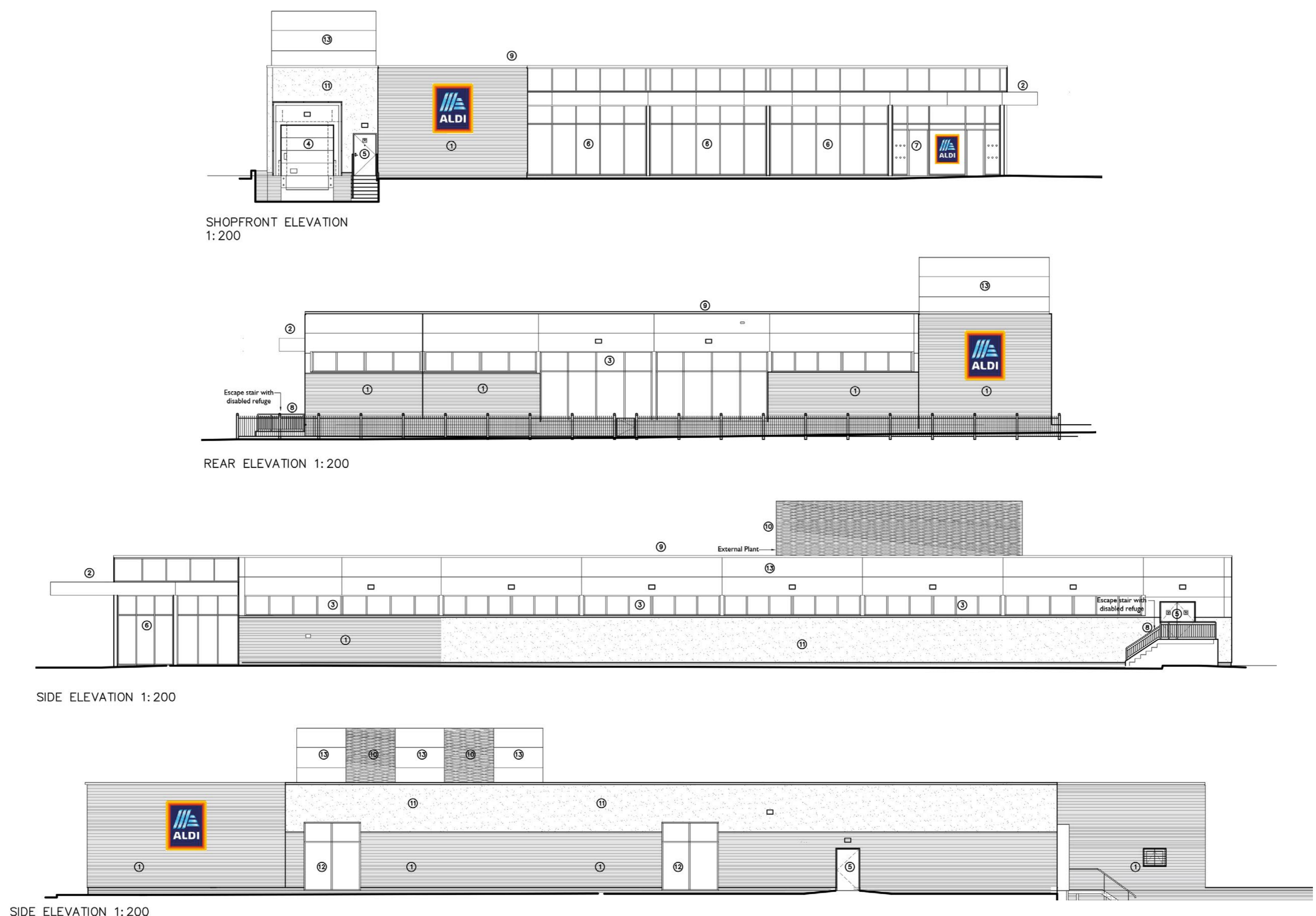
## Deliveries

Aldi stocks a carefully selected core range of approximately 1,800 exclusive products, compared to a typical supermarket which stocks 15,000 – 40,000. This means Aldi food stores normally only need around 3-4 deliveries per day.

Delivery vehicles will also access the site via Corporation Street. We aim to operate store deliveries outside of peak transport hours where possible.

All manoeuvring takes place within the site, and a unique delivery ramp arrangement removes the need for external activity.

This process is not only efficient, but also reduces any potential noise disturbance to neighbouring properties.



Proposed elevations





# About us

## Part of your community

We are proud to be at the heart of local communities across the country. As part of our community-led culture, we have a number of "neighbour-friendly" practices.

- Aldi aims to recruit its store managers and store colleagues from the local area, which allows them to react quickly and sympathetically to any local issues
- Unlike many supermarkets, which operate 24-hour opening periods, our stores typically open between 8am and 10pm Monday to Saturday, and between 10am and 4pm on Sundays
- Aldi's unique delivery system enables products to be transferred from the vehicle straight to store, without the need for external movement – minimising the potential for any disruption
- We are committed to being responsible neighbours, and work closely with the local community to ensure that any disturbance is kept to a minimum, from construction right through to when the store is open
- Aldi works with community engagement platform Neighbourly to pair local charities, community groups, and food banks with its store, to enable them to collect surplus food and perishable products up to seven days a week.

## Local Jobs

The new Aldi food store will create up to 45 new jobs for local people as well as additional jobs during construction and throughout the supply chain.

Aldi's rates of pay are significantly higher than the Government's National Living Wage and also above the Living Wage Foundation's recommended national rates. Store Assistants receive a minimum hourly rate of £10.10.

It is Aldi's aim to recruit store colleagues locally for its new stores and, as a result, most staff live close to the store where they work.

More information on career opportunities can be found at [www.aldirecruitment.co.uk](http://www.aldirecruitment.co.uk)





# A new Aldi food store on Evreux Way, Rugby



CGI of the proposed store



# Site plan of proposed new Aldi store

