

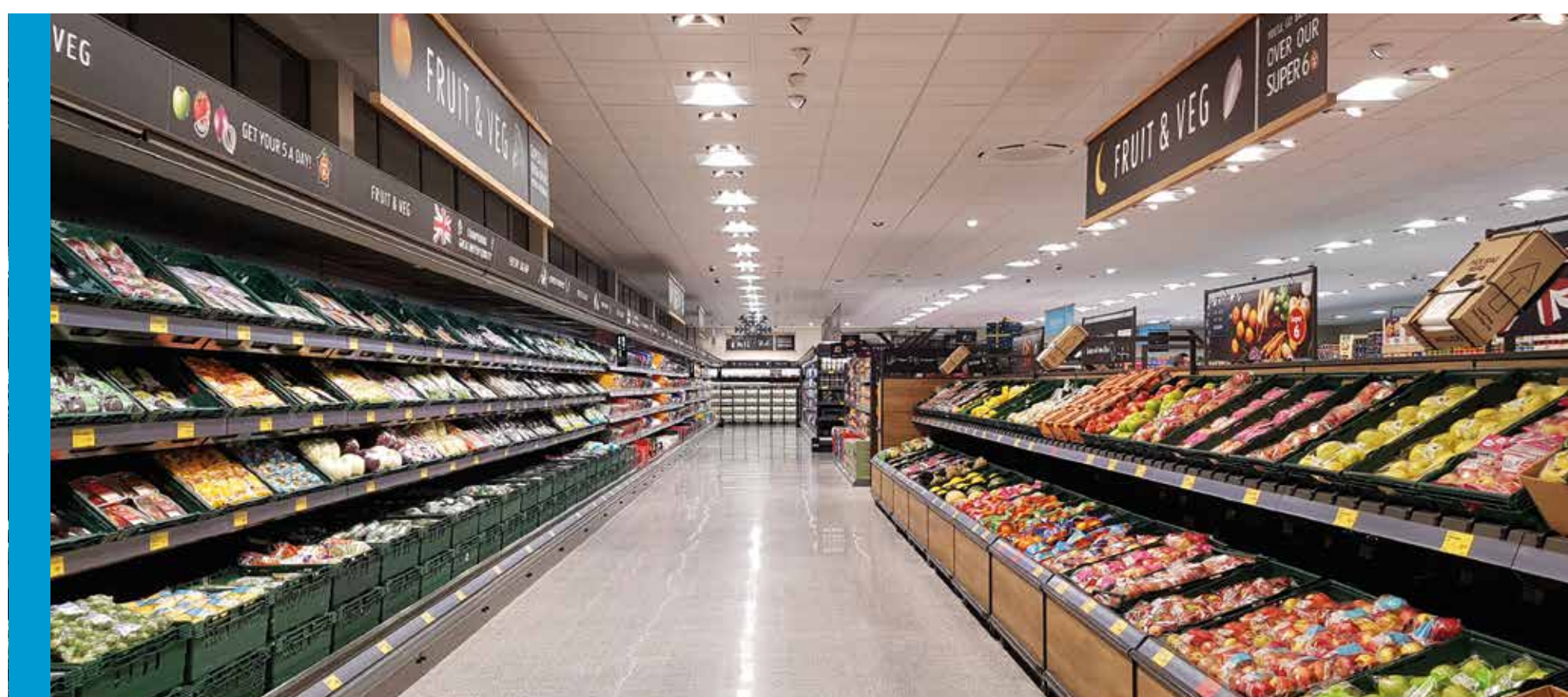


Sustainability and greener technology

Aldi puts sustainability at the centre of its store design process and is committed to meeting or exceeding standards of best practice. We implement a number of sustainability measures during the construction and operation of our stores.

Sustainable construction measures can include:

- **Reuse of materials:** where buildings are being demolished, Aldi seeks to reuse materials in construction, for example aggregates can often be reused as building hard core. When reuse is not possible Aldi is committed to responsible disposal and where possible recycling materials.
- **Building materials:** Aldi aims to source materials that minimise energy required for production and transportation.
- **Permeable paving:** some of our stores feature permeable paving within parking bays to attenuate and clean surface water before draining off site.
- **Considerate construction:** throughout construction, Aldi seeks to minimise any adverse effect on the surrounding environment. This includes monitoring construction waste, wheel washing and dampening the site to minimise dust, restricting working hours and strict management of construction traffic.



- **Building Management System:** All Aldi developments are designed with a full Building Management System. This monitors the conditions within the building and reduces its energy demand by controlling elements and recording when excessive heat is lost; in scenarios where fridge or freezer doors are accidentally left open.
- **Waste Strategy:** Aldi operate on a reduce, reuse, recycle basis across all their resources, right down to their waste. That's why, since 2014, Aldi UK have sent no waste directly to landfill. They are continually seeking to reduce the level of materials used across the supply chain and operations while getting the most from the resources they use.
- **Sourcing local produce:** Each depot has an in-house Trading Director who sources local bread, produce and milk deliveries. This allows for the stores to be provided with the freshest possible product, but equally reduces vehicle movements nationally.



Sustainable operational measures can include:

- **Heat-recovery system:** Aldi utilises a heat recovery system from its refrigeration condensers to provide all heating for the store, reusing otherwise wasted machinery heat via underfloor heating.
- **Reducing heat loss:** stores are designed to minimise heat loss using seals on external access doors and our service bays (between the building and delivery vehicles). At the customer entrance of our stores, automatic sliding doors ensure the building is sealed when people are not entering.
- **LED Lighting:** all stores feature energy efficient LED lighting. Outside trading hours, lighting levels are dropped to one-third of the usual levels for stocking shelves. When the store is completely unoccupied, all lights (external and internal) are switched off.

